

# ONYX

TECHNOLOGY POWERING A CLEANER FUTURE



**FAST | SIMPLE | SAFE | RELIABLE**



# ONYX

TECHNOLOGY POWERING A CLEANER FUTURE

## OUR PURPOSE

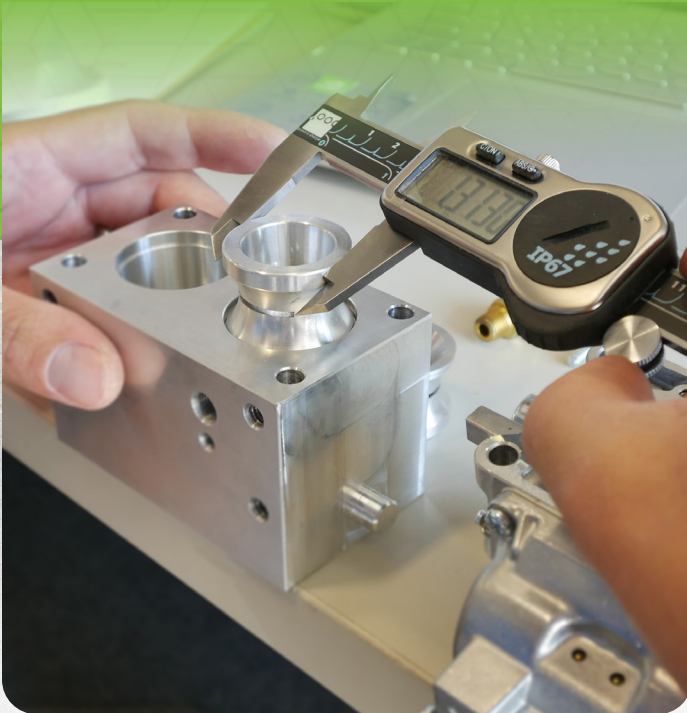
To provide technology powering a cleaner future.

## OUR MISSION

Is to innovate clean-power technology that helps our customers, and the communities they serve.

## OUR VISION

ONYX Clean Tech Solutions is leading the charge to power a cleaner future and actively reduce the worlds carbon footprint.



ONYX STORE

[onyxsolutions.com](https://onyxsolutions.com)





# ONYX

TECHNOLOGY POWERING A CLEANER FUTURE



**DX15**  
BATTERY AUTOSCRUBBER

## FAST • SIMPLE • RELIABLE

Cleans up to 16,000 sq ft per hour | Ultra Low noise level |



Cleaning Width	15" Brush with water containment skirt
Squeegee Width	27"
Performance	Up to 16,000 Sq Ft Per Hour
Vacuum Motor	500 watt
Sound Level	< 63 dBA
Pad Speed	180 RPM
Pad Size	15"
Run Time	3-4 Hours
Head Pressure	25 lbs
Solution Capacity	7 Gallons
Recovery Capacity	8 Gallons
Weight	205 lbs, Shipping Weight 300lbs
Battery Capacity	24 volt, 2 x 12v 125 Ah AGM
Warranty	3 Years on Machine 90 Days On Wearable Parts
Frame	Powder Coated Reinforced Steel Frame & LDPE Body
Dimensions	24"W x 40"L x 41"H



### FAST

- Clean up to 16,000 sq ft per hour
- Tool-less easy brush/pad removal
- Optimized runtime - Oversized solution tanks
- Floating brush skirt contains water and prevents splatter

### SIMPLE

- Single dashboard – simple controls
- Ultralow noise level
- Anti-vibration design

### RELIABLE

- Fully sealed
- Heavy duty LDPE body

### FACILITIES / USE CASES

- Convenience Stores & Gas Stations
- Restaurants
- Small Box Retail
- Industrial Kitchens





# ONYX

TECHNOLOGY POWERING A CLEANER FUTURE



**DX20**  
BATTERY AUTOSCRUBBER

## FAST • SIMPLE • RELIABLE

Cleans up to 24,000 sq ft per hour | Ultra Low noise level |



Cleaning Width	20" Brush with water containment skirt
Vacuuming Width	32" Squeegee
Performance	Up to 24,000 Sq Ft Per Hour
Vacuum Motor	500 watt
Brush Head Motor	500 watt
Traction Drive Motor	800 watt
Sound Level	< 63 dBA
Pad Speed	180 RPM
Pad Size	20"
Run Time	3-4 Hours
Head Pressure	50-90 lbs, adjustable
Solution Capacity	14 Gallons
Recovery Capacity	16 Gallons
Weight	290 lbs, Shipping Weight 310lbs
Battery Capacity	24 volt - 2 x 12 volt, 125 Ah AGM
Warranty	3 Years on Machine 90 Days On Wearable Parts
Frame	Powder Coated Reinforced Steel Frame & LDPE Body
Dimensions	20"W x 49"L x 44"H



### FAST

- Clean up to 24,000 sq ft per hour
- Tool-less easy brush/pad removal
- Optimized runtime - Oversized solution tanks
- DX20T: Traction drive assist for effortless operation
- Floating brush skirt contains water and prevents splatter

### SIMPLE

- Single dashboard – simple controls
- Ultralow noise level
- Anti-vibration design

### RELIABLE

- Fully sealed
- Heavy duty LDPE body
- Heavy duty steel frame

### FACILITIES / USE CASES

- Janitorial & Construction contractors
- Hospitals / School / Education
- Small Box Retail
- Rental





# ONYX

TECHNOLOGY POWERING A CLEANER FUTURE



**DX32**  
BATTERY FLOOR SCRUBBER



**DX26**  
BATTERY FLOOR SCRUBBER

## FAST • SIMPLE • RELIABLE

Cleans up to 46,000 sq ft per hour | Ultra Low noise level |





## TECHNICAL SPECIFICATIONS

ALL SCRUBBERS ARE  
SOLD STANDARD  
WITH PAD DRIVER  
AND BRUSH

Cleaning Width	26" with dual 13" Brushes, Containment Skirt
Vacuuming Width	46" Squeegee
Performance	Up to 35,000 Sq Ft Per Hour
Vacuum Motor	500 watt
Brush Head Motor	Dual 500 watt
Sound Level	< 63 dBA
Pad Speed	180 RPM
Pad Size	13" x 2
Run Time	4-5 Hours
Head Pressure	100 lbs
Solution Capacity	17 Gallons
Recovery Capacity	23 Gallons
Weight	460 lbs, Shipping Weight 480lbs
Battery Capacity	24 volt, 4 x 6 volt 250 Ah AGM
Warranty	3 Years on Machine 90 Days On Wearable Parts
Frame	Powder Coated Reinforced Steel Frame & LDPE Body
Dimensions	28"W x 53"L x 45"H



### FAST

- Clean up to 35,000 sq ft per hour
- Tool-less easy brush/pad removal
- Optimized runtime - Oversized solution tanks
- Floating brush skirt contains water and prevents splatter

### SIMPLE

- Single dashboard – simple controls
- Ultralow noise level
- Anti-vibration design

### RELIABLE

- Fully sealed
- Heavy duty LDPE body

### FACILITIES / USE CASES

- Janitorial & Construction contractors
- Industrial / Manufacturing
- Big Box Retail / Grocery
- Airports
- Schools / Education
- Rental

**ONYX**  
TECHNOLOGY POWERING A CLEANER FUTURE

12605 Commerce Station Drive • Suite 700  
Huntersville, NC 28078  
704.827.9368



[onyxsolutions.com](http://onyxsolutions.com)





## TECHNICAL SPECIFICATIONS

**ALL SCRUBBERS ARE  
SOLD STANDARD  
WITH PAD DRIVER  
AND BRUSH**

Cleaning Width	32" with dual 16" Brushes, Containment Skirt
Vacuuming Width	46" Squeegee
Performance	Up to 46,000 Sq Ft Per Hour
Vacuum Motor	500 watt
Brush Head Motor	Dual 500 watt
Sound Level	< 63 dBA
Pad Speed	180 RPM
Pad Size	15" x 2
Run Time	4-5 Hours
Head Pressure	100 lbs
Solution Capacity	17 Gallons
Recovery Capacity	23 Gallons
Weight	460 lbs, Shipping Weight 480lbs
Battery Capacity	24 volt, 4 x 6 volt 250 Ah AGM
Warranty	3 Years on Machine 90 Days On Wearable Parts
Frame	Powder Coated Reinforced Steel Frame & LDPE Body
Dimensions	33"W x 53"L x 45"H



### **FAST**

- Clean up to 46,000 sq ft per hour
- Tool-less easy brush/pad removal
- Optimized runtime - Oversized solution tanks
- Floating brush skirt contains water and prevents splatter

### **SIMPLE**

- Single dashboard – simple controls
- Ultralow noise level
- Anti-vibration design

### **RELIABLE**

- Fully sealed
- Heavy duty LDPE body
- Heavy duty steel frame

### **FACILITIES / USE CASES**

- Janitorial & Construction contractors
- Industrial / Manufacturing
- Big Box Retail / Grocery
- Airports
- Schools
- Rental

**ONYX**  
TECHNOLOGY POWERING A CLEANER FUTURE

12605 Commerce Station Drive • Suite 700  
Huntersville, NC 28078  
704.827.9368



[onyxsolutions.com](http://onyxsolutions.com)



# ONYX

TECHNOLOGY POWERING A CLEANER FUTURE



**JXi**  
BATTERY FLOOR BURNISHER

## FAST • SIMPLE • RELIABLE

Cleans up to 28,000 sq ft per hour | Ultra Low noise level |



# JXi TECHNICAL SPECIFICATIONS

Cleaning Width	21". Dust collection system: Onboard vacuum and dust collection bag
Performance	Up to 28,000 Sq Ft Per Hour
Vacuum Motor	400 watt
Brush Head Motor	3HP, 2.2 kW
Sound Level	< 63 dBA
Pad Speed	2000 RPM
Pad Size	21"
Run Time	2 Hours
Head Pressure	8 - 50 lbs, adjustable
Weight	280 lbs, Shipping Weight 310lbs
Battery Capacity	36 volt, 175 Ah AGM ,
Warranty	3 Years on Machine 90 Days On Wearable Parts
Frame	Powder Coated Reinforced Steel Frame & LDPE Body
Dimensions	24"W x 64"L x 42"H



## FAST

- Best-in-class Productivity - Industry leading power
- Burnish up to 28,000 sq ft per hour
- Tool-less pad driver removal
- Quick wheel & handle adjustment
- Industry leading power

## CLEAN & SAFE

- Ultra-low noise level
- Anti-vibration isolators
- Watertight electrical enclosures
- Enclosed body

## RELIABLE

- Fully sealed
- Industrial grade electrical connections
- Heavy duty LDPE body
- Heavy duty steel frame

## FACILITIES / USE CASES

- Construction Contractors
- Grocery
- Schools
- Big Box Retail
- Hospitals / Nursing Homes

**ONYX**  
TECHNOLOGY POWERING A CLEANER FUTURE

12605 Commerce Station Drive • Suite 700  
Huntersville, NC 28078  
704.827.9368



[onyxsolutions.com](http://onyxsolutions.com)

# ONYX

TECHNOLOGY POWERING A CLEANER FUTURE



**RX20**  
RIDE-ON FLOOR SCRUBBER

## FAST • SIMPLE • RELIABLE

Cleans up to 35,000 sq ft per hour | Ultra Low noise level |



# RX20 TECHNICAL SPECIFICATIONS

ALL SCRUBBERS ARE  
SOLD STANDARD  
WITH PAD DRIVER  
AND BRUSH

Cleaning Width	20" brush with Containment Skirt
Vacuum Width	32" Squeegee
Performance	Up to 35,000 Sq Ft Per Hour
Vacuum Motor	500 watt
Brush Head Motor	500 watt
Drive System	800 watt, RWD
Sound Level	< 63 dBA
Pad Speed	180 RPM
Pad Size	20"
Run Time	3-4 Hours
Head Pressure	100 lbs
Solution Capacity	17 Gallons
Recovery Capacity	20 Gallons
Weight	485 lbs, Shipping Weight 505lbs
Battery Capacity	24 volt, 2 x 12 volt 125 Ah AGM
Warranty	3 Years on Machine 90 Days On Wearable Parts
Frame	Powder Coated Reinforced Steel Frame & LDPE Body
Dimensions	24"W x 49"L x 43"H



## FAST

- Clean up to 35,000 sq ft per hour
- Tool-less easy brush/pad removal
- Optimized runtime - Oversized solution tanks
- Floating brush skirt contains water and prevents splatter
- Tight turn maneuverability

## SIMPLE

- Single dashboard – simple controls
- Ultralow noise level
- Anti-vibration design
- Emergency stop button

## RELIABLE

- Heavy duty steel frame construction
- Fully sealed
- Heavy duty LDPE body
- Industrial grade bearings

## FACILITIES / USE CASES

- Schools / Education
- Malls
- National Accounts
- Hospitals
- Big Box Retail / Warehouses

**ONYX**  
TECHNOLOGY POWERING A CLEANER FUTURE

12605 Commerce Station Drive • Suite 700  
Huntersville, NC 28078  
704.827.9368



[onyxsolutions.com](http://onyxsolutions.com)

# ONYX

TECHNOLOGY POWERING A CLEANER FUTURE



**RX32**

RIDE-ON FLOOR SCRUBBER

## FAST • SIMPLE • RELIABLE

Cleans up to 60,000 sq ft per hour | Ultra Low noise level |



Cleaning Width	32" with dual 16" Brushes, Containment Skirt
Vacuum Width	46" Squeegee
Performance	Up to 60,000 Sq Ft Per Hour
Vacuum Motor	500 watt
Brush Head Motor	Dual 500 watt
Drive System	800 watt, Single FWD
Sound Level	< 63 dBA
Pad Speed	180 RPM
Pad Size	15" x 2
Run Time	5-6 Hours
Head Pressure	100 lbs
Solution Capacity	25 Gallons
Recovery Capacity	34 Gallons
Weight	745 lbs, Shipping Weight 765lbs
Battery Capacity	24 volt, 4 x 6 volt 250 Ah AGM
Warranty	3 Years on Machine 90 Days On Wearable Parts
Frame	Powder Coated Reinforced Steel Frame & LDPE Body
Dimensions	32"W x 53"L x 45"H



## FAST

- Clean up to 60,000 sq ft per hour
- Tool-less easy brush/pad removal
- Optimized runtime - Oversized solution tanks
- Floating brush skirt contains water and prevents splatter
- Tight turn maneuverability

## SIMPLE

- Single dashboard – simple controls
- Ultralow noise level
- Anti-vibration design
- Emergency stop button
- Ergonomic / Adjustable Seat

## RELIABLE

- Heavy duty steel frame construction
- Fully sealed
- Heavy duty LDPE body
- Industrial grade bearings

## FACILITIES / USE CASES

- Schools / Education
- Malls
- National Accounts
- Hospitals
- Big Box Retail / Warehouses
- Venues / Events





# ONYX

TECHNOLOGY POWERING A CLEANER FUTURE



**RX34**  
RIDE-ON FLOOR SCRUBBER

## FAST • SIMPLE • RELIABLE

Cleans up to 62,500 sq ft per hour | Ultra Low noise level |



# RX34 TECHNICAL SPECIFICATIONS

ALL SCRUBBERS ARE  
SOLD STANDARD  
WITH PAD DRIVER  
AND BRUSH

Cleaning Width	34" with dual 17" brushes, Containment Skirt
Vacuum Width	46" Squeegee
Performance	Up to 62,500 Sq Ft Per Hour
Vacuum Motor	500 watt
Brush Head Motor	Dual 500 watt
Drive System	800 watt, Single FWD
Sound Level	< 63 dBA
Pad Speed	180 RPM
Pad Size	17" x 2
Run Time	5-6 Hours
Head Pressure	125 lbs
Solution Capacity	47 Gallons
Recovery Capacity	51 Gallons
Weight	1,275 lbs, Shipping Weight 1,295lbs
Battery Capacity	36 volt, 6 x 6 volt 250 Ah AGM
Warranty	3 Years on Machine 90 Days On Wearable Parts
Frame	Powder Coated Reinforced Steel Frame & LDPE Body
Width & Length	37"W x 67"L x 48"H



## FAST

- Clean up to 62,500 sq ft per hour
- Tool-less easy brush/pad removal
- Optimized runtime - Oversized solution tanks
- Floating brush skirt contains water and prevents splatter
- Fast speed setting (transportation)

## SIMPLE

- Single dashboard – simple controls
- Ultralow noise level
- Anti-vibration design
- Emergency stop button

## RELIABLE

- Heavy duty steel frame construction
- Fully sealed
- Heavy duty LDPE body
- Industrial grade bearings

## FACILITIES / USE CASES

- Schools / Education
- Malls
- National Accounts
- Hospitals
- Big Box Retail / Warehouses
- Venues / Events

**ONYX**  
TECHNOLOGY POWERING A CLEANER FUTURE

12605 Commerce Station Drive • Suite 700  
Huntersville, NC 28078  
704.827.9368



[onyxsolutions.com](https://onyxsolutions.com)



# ONYX

TECHNOLOGY POWERING A CLEANER FUTURE



**TX1**  
PROPANE FLOOR STRIPPER

## FAST • CLEAN • SAFE • RELIABLE

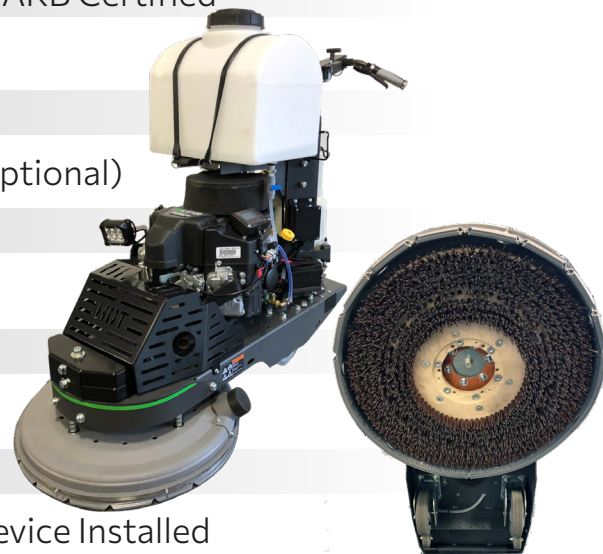
Strip, Grind & Polish up to 8,000 sq ft per hour | Ultra Low noise level | Industry Leading Power





## TECHNICAL SPECIFICATIONS

Width	21" with HDPE Splash Guard Floating Skirt
Performance	Up to 8,000 Sq Ft Per Hour
Engine	708cc 19HP, LPG Fuel System, EPA/CARB Certified
Sound Level	87 dBA
Pad Speed	540-1080 RPM
Pad Size	21" Strip Brush Included (pad driver optional)
Run Time	6 Hours Per 20lb Cylinder
Frame	Powder Coated Reinforced Steel
Dimensions	21"W x 53"L x 40-48"H adjustable
Weight	450 lbs, Shipping Weight 480lbs
Ignition System	12v Electric Start
Fuel Tank	20lb Steel with Overfill Protection Device Installed
Warranty	3 Years on Engine, 1 Year on Machine, 90 Days on Wearable Parts
Water Tank	8 Gallon Gravity Feed Water System



### FAST

- Strip up to 8,000 sq ft per hour
- Headlight illuminates working area
- On-board water system boosts productivity
- 21" single head stripper; maneuverable and versatile; easy to use in tight spaces

### CLEAN & SAFE

- Qualifies for Near zero emission (NZE) contract bids
  - *Certified 100x below EPA Carbon Monoxide stds*
  - *Lowest carbon emissions in its class, by 53%*
- Floating brush skirt contains dust
- Lightweight and easy to handle/lift
- Ultra Low noise level
- Anti-vibration design
- On-board real-time emissions monitoring with SAM Safe Air Monitor

### RELIABLE

- Heavy duty steel construction
- Industrial grade high temp bearings
- Industrial grade drive shaft

### FACILITIES / USE CASES

- Construction contractors
- Industrial / Manufacturing
- Grocery
- Big Box Retail / Warehouses
- Airports
- Schools / Education
- Rental

**ONYX**  
TECHNOLOGY POWERING A CLEANER FUTURE

12605 Commerce Station Drive • Suite 700  
Huntersville, NC 28078  
704.827.9368



[onyxsolutions.com](https://onyxsolutions.com)



# ONYX

TECHNOLOGY POWERING A CLEANER FUTURE



**TX7**  
PLANETARY FLOOR MACHINE

## FAST • CLEAN • SAFE • RELIABLE

Strip up to 10,000 sq ft per hour | Ultra Low noise level | Industry Leading Power





## TECHNICAL SPECIFICATIONS

Width	27" w/ HDPE Splash Guard Floating Skirt
Performance	Up to 10,000 Sq Ft Per Hour
Engine	708cc 19 HP, LPG Fuel System, EPA/CARB Certified
Sound Level	87 dBA
Pad Speed	540-1080 RPM
Pad Size	3 - 10" Drivers/Brushes
Run Time	6 Hours Per 20lb Cylinder
Frame	Powder Coated Reinforced Steel
Dimensions	30"W x 53"L x 40-48"H adjustable
Weight	450 lbs, Shipping Weight 480lbs
Ignition System	12v Electric Start
Fuel Tank	20lb Steel with Overfill Protection Device Installed
Warranty	3 Years on Engine, 1 Year on Machine, 90 Days on Wearable Parts
Water Tank	8 Gallon Gravity Feed Water System



### FAST

- Clean up to 10,000 sq ft per hour
- Tool-less easy brush/pad removal
- Headlight illuminates working area
- On-board water system boosts productivity
- 27" Three disc planetary design eliminates torque on the operator for exceptional ease of use

### CLEAN & SAFE

- Qualifies for Near zero emission (NZE) contract bids
  - *Certified 100x below EPA Carbon Monoxide stds*
  - *Lowest carbon emissions in its class, by 53%*
- Floating brush skirt contains dust
- Ultra Low noise level
- Anti-vibration design
- On-board real-time emissions monitoring with SAM Safe Air Monitor

### RELIABLE

- Heavy duty steel frame construction
- Industrial grade high temp bearings
- Industrial grade drive shaft

### FACILITIES / USE CASES

- Construction contractors
- Industrial / Manufacturing
- Grocery
- Big Box Retail / Warehouses
- Airports
- Schools / Education
- Rental

**ONYX**  
TECHNOLOGY POWERING A CLEANER FUTURE

12605 Commerce Station Drive • Suite 700  
Huntersville, NC 28078  
704.827.9368



[onyxsolutions.com](https://onyxsolutions.com)



# ONYX

TECHNOLOGY POWERING A CLEANER FUTURE

**JX / JXP**  
PROPANE FLOOR BURNISHER



**JX7-600**

**JX7-700**

## FAST • CLEAN • SAFE • RELIABLE

Cleans up to 34,000 sq ft per hour | Ultra Low noise level | Industry leading power

# JX7-600 TECHNICAL SPECIFICATIONS

Cleaning Width	21", 24", or 27", Dust Containment Skirt & 2.5" Vacuum Port Installed
Engine	603cc 17 HP, LPG Fuel System, EPA/CARB Certified
Performance	Up to 34,000 Sq Ft Per Hour
Sound Level	< 87 dBA
Pad Speed	1200 to 2100 RPM
Pad Size	21", 24" & 27" Pad Drivers / Easy pad removal
Run Time	6 Hours Per 20 lb Cylinder
Dimensions	28"W x 53"L x 40-48"H adjustable
Frame	Powder Coated Reinforced Steel
Weight	280 lbs, Shipping Weight 310lbs
Engine Start	12v Electric Start
Fuel Tank	20lb Steel with Overfill Protection Device Installed
Warranty	3 Years On Engine 1 Year on Machine 90 Days On Wearable Parts.

**JXP** Model Emission Monitoring System, Electric Clutch, Microfiber Vacuum Bags

## FAST

- Best-in-class Productivity - Industry leading power
- Burnish up to 34,000 sq ft per hour
- 3-in-1 Configuration:
  - Quick change head design (21", 24", 27")
  - Superior operator versatility
- Tool-less pad driver removal
- Quick wheel & handle adjustment

## CLEAN & SAFE

- Qualifies for Near Zero Emission (NZE) contract bids
  - Certified 100x below EPA Carbon Monoxide standards
  - Lowest carbon emissions in its class, by 53%
- On-board real-time emissions monitoring
- Anti-vibration isolators
- Low tone noise reduction muffler
- Floating brush skirt contains dust
- Lightweight and easy to handle/lift (lift handle optional)

## RELIABLE

- Fuel system requires no adjustments
- Internal vaporizer eliminates regulator freezing
- In-line fuel filter
- Heavy duty steel construction
- Renben industrial-grade bearings

## FACILITIES / USE CASES

- Construction Contractors
- Grocery
- Airports
- Schools
- Big Box Retail



**ONYX**  
TECHNOLOGY POWERING A CLEANER FUTURE

12605 Commerce Station Drive • Suite 700  
Huntersville, NC 28078  
704.827.9368



[onyxsolutions.com](https://onyxsolutions.com)



Cleaning Width	21", 24", or 27", Dust Containment Skirt & 2.5" Vacuum Port Installed
Engine	708cc 19 HP, LPG Fuel System, EPA/CARB Certified
Performance	Up to 34,000 Sq Ft Per Hour
Sound Level	< 87 dBA
Pad Speed	1200 to 2100 RPM
Pad Size	21", 24" & 27" Pad Drivers / Easy pad removal
Run Time	6 Hours Per 20 lb Cylinder
Width & Length	28" x 53"
Frame	Powder Coated Reinforced Steel
Weight	295 lbs, Shipping Weight 325lbs
Engine Start	12v Lithium-ion Battery Start
Fuel Tank	20lb Steel with Overfill Protection Device Installed
Warranty	3 Years On Engine 1 Year on Machine 90 Days On Wearable Parts.



**JXP Model** Emission Monitoring System, Electric Clutch, Microfiber Vacuum Bags

## FAST

- Best-in-class Productivity - Industry leading power
- Burnish up to 34,000 sq ft per hour
- 3-in-1 Configuration:
  - Quick change head design (21", 24", 27")
  - Superior operator versatility
- Tool-less pad driver removal
- Quick wheel & handle adjustment

## CLEAN & SAFE

- Qualifies for Near Zero Emission (NZE) contract bids
  - Certified 100x below EPA Carbon Monoxide standards
  - Lowest carbon emissions in its class, by 53%
- On-board real-time emissions monitoring
- Anti-vibration isolators
- Low tone noise reduction muffler
- Floating brush skirt contains dust
- Lightweight and easy to handle/lift (lift handle optional)

## RELIABLE

- Fuel system requires no adjustments
- Internal vaporizer eliminates regulator freezing
- In-line fuel filter
- Heavy duty steel construction
- Renben industrial-grade bearings

## FACILITIES / USE CASES

- Construction Contractors
- Grocery
- Airports
- Schools
- Big Box Retail
- Rental



# ONYX

TECHNOLOGY POWERING A CLEANER FUTURE



**ZX7**  
PROPANE FLOOR POLISHER

## FAST • CLEAN • SAFE • RELIABLE

Polishes up to 34,000 sq ft per hour | Ultra Low noise level | Industry leading power





## TECHNICAL SPECIFICATIONS

Cleaning Width	27", Dust Containment Skirt & 2.5" Vacuum Port Installed
Engine	708cc 19 HP, LPG Fuel System, EPA/CARB Certified
Performance	Up to 34,000 Sq Ft Per Hour
Sound Level	< 87 dBA
Pad Speed	1200 to 2100 RPM
Pad Size	27" Pad Drivers / Easy pad removal
Run Time	6 Hours Per 20 lb Cylinder
Width & Length	28" x 53"
Frame	Powder Coated Reinforced Steel
Weight	295 lbs, Shipping Weight 325lbs
Ignition System	12v Lithium-ion Battery Start
Fuel Tank	20lb Steel with Overfill Protection Device Installed
Water Tank	8 Gallons
Warranty	3 Years On Engine 1 Year on Machine 90 Days On Wearable Parts.



### FAST

- Best-in-class Productivity - Industry leading power
- Burnish up to 34,000 sq ft per hour
- Tool-less pad driver removal
- Quick wheel & handle adjustment

### CLEAN & SAFE

- Qualifies for Near Zero Emission (NZE) contract bids
  - Certified 100x below EPA Carbon Monoxide standards
  - Lowest carbon emissions in its class, by 53%
- On-board real-time emissions monitoring
- Anti-vibration isolators
- Low tone noise reduction muffler
- Floating brush skirt contains dust
- Lightweight and easy to handle/lift (lift handle optional)

### RELIABLE

- Fuel system requires no adjustments
- Internal vaporizer eliminates regulator freezing
- In-line fuel filter
- Lead free lithium-ion battery
- Heavy duty steel construction
- Renben industrial-grade bearings

### FACILITIES / USE CASES

- Construction Contractors
- Grocery
- Airports
- Schools
- Big Box Retail





SAM monitors carbon monoxide (CO) levels in the air to comply with OSHA indoor air quality regulations. SAM warns operators on forklifts, floor polishers, and other industrial equipment if the surrounding air is unsafe.

If unsafe air conditions exist, SAM will sound an alarm and automatically shut down equipment. SAM also displays and records engine hours, RPMs, service intervals, and air-fuel-ratios and is compatible with ONYX Fleet Link.

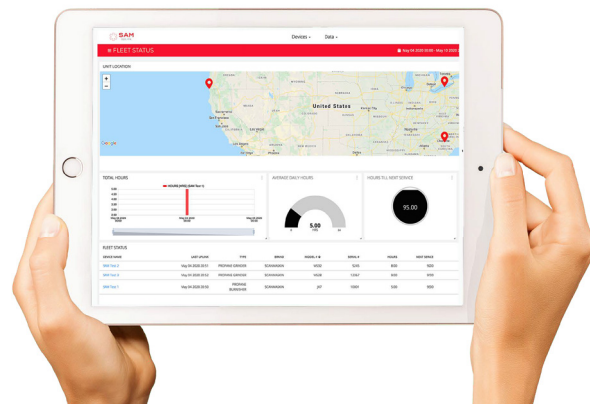


#### About safety technologies

Our goal is to keep your workforce safe and productive, with uncompromising integrity and passionate innovation. Our team works closely with equipment manufacturers in industries such as construction, material handling, and power generation to co-develop products that keep equipment operators safer and more productive.

ONYX Fleet Link is a simple to install and use cellular based fleet monitoring solution that tracks the location and performance of all engine and battery powered applications.

**ONYX**  
FLEET LINK

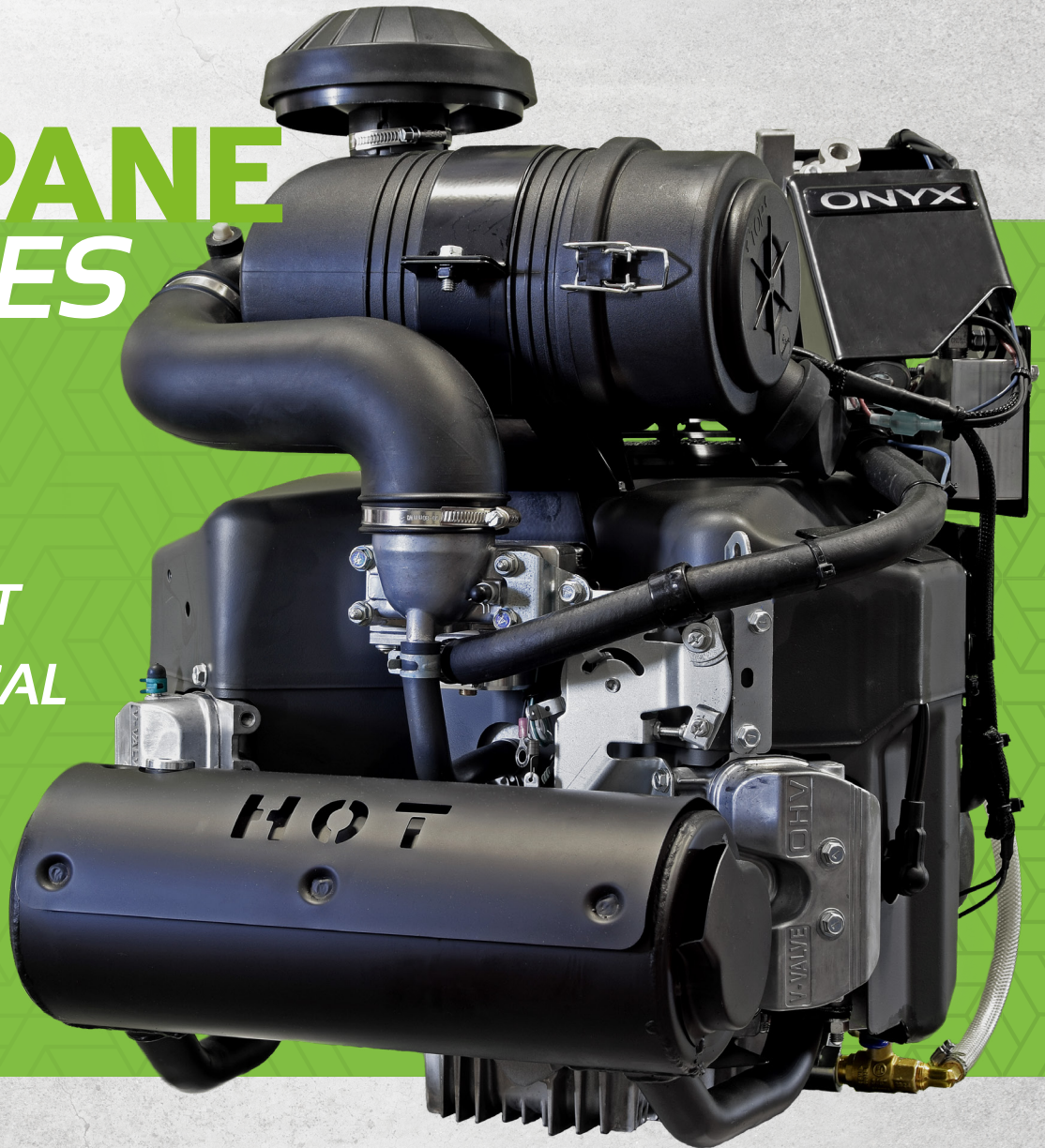


**ONYX**  
TECHNOLOGY POWERING A CLEANER FUTURE



# PROPANE ENGINES

- ⚡ *POWERFUL*
- 💧 *CLEAN*
- ⚙️ *EASY START*
- 💰 *ECONOMICAL*



**BOOST PRODUCTIVITY**  
**LOWER COSTS**  
**CLEAN AIR POWER**



# WHY ONLYX

TECHNOLOGY POWERING A CLEANER FUTURE



## ✓ NEAR ZERO EMISSIONS

Over 90% carbon monoxide emission reduction over gasoline engines

## ✓ BEST-IN-CLASS PERFORMANCE

Patented fuel systems deliver precise air fuel ratios for maximum performance

## ✓ USE ANY PROPANE CYLINDER

Liquid or vapor cylinder compatible with no regulator freezing or power loss

## ✓ EPA & CARB CERTIFIED

Far exceeds ALL exhaust emission standards

## ✓ FULL MANUFACTURER'S WARRANTY

Peace of mind purchasing



Heat Transfer allows for any propane tank to be used, vapor or liquid.

Patented 3-Stage Pressure Regulators eliminate freeze ups, improve performance, and increase reliability.

Superior fuel filtering reduces downtime caused by dirty fuel.

# PROPANE ADVANTAGE



## POWERFUL

No Duty-Cycle Power Loss  
Increased productivity  
4-Stroke Engines



## ECONOMICAL

More cost-effective to use & maintain  
Propane can be over **30%-35%** less expensive than gasoline



## CLEAN

**90%** Cleaner exhaust emissions  
Zero evaporative emissions  
Zero fuel spillage & theft



## EASY START

No choke - No priming  
No carburetor gum up  
No winterizing

**ONLYX**  
TECHNOLOGY POWERING A CLEANER FUTURE



# PROPANE ENGINES & CONVERSIONS



## MODEL:

**LX600**

**LX700**

**LX900**

**LX1000**

Type:	Air-cooled, V-Twin OHV	Air-cooled, V-Twin OHV	Air-cooled, V-Twin OHV	Air-cooled, V-Twin OHV
Power:	17hp (12.7 kW)	19hp (14.0 kW)	27hp (20kW)	31hp (22.9 kW)
Size:	603cc Vertical Shaft	708cc Vertical Shaft	852cc Vertical Shaft	999cc Vertical Shaft
Bore x Stroke:	73mm x 72mm	77mm x 76mm	84.5mm x 76mm	84.5mm x 76mm
Fuel:	LPG Propane	LPG Propane	LPG Propane	LPG Propane
Fuel System:	Variable Venturi	Fixed Venturi & Jet with Butterfly Throttle	Fixed Venturi & Jet with Butterfly Throttle	Fixed Venturi & Jet with Butterfly Throttle
Propane Cylinder:	Liquid or Vapor Draw	Vapor Draw	Liquid or Vapor Draw	Liquid or Vapor Draw
Starter Type:	Electric 12v	Heavy Duty Electric 12v	Heavy Duty Electric 12v	Heavy Duty Electric 12v
Oil Capacity:	2 Liters	2.4 Liters	2.4 Liters	2.4 Liters
Dry Weight:	81 lbs.	93 lbs.	125 lbs.	130 lbs.
Air Cleaner:	Dual Element	Heavy Duty Canister	Heavy Duty Canister	Heavy Duty Canister
Muffler:	Low Tone Catalytic	Low Tone Catalytic	Low Tone Catalytic	Low Tone Catalytic
Crankshaft	1" Keyed PTO	1" Keyed PTO	1-1/8" Keyed PTO	1-1/8" Keyed PTO

## Propane Engine Conversion Kits

Brand	Kawasaki	Kawasaki	Kawasaki	Kawasaki
Engine Model:	FS481V, FS541V, FS600V, FX481V, FX541V, FX600V	FS651V, FS691V, FS730V	FX651V, FX691V, FX730V	FX751V, FX801V, FX850V
Kit Part Number:	EK-KA603FX/FS	EK-KA726FS	EK-KA726FX	EK-KA852FX



## Application Specific Conversion Kits

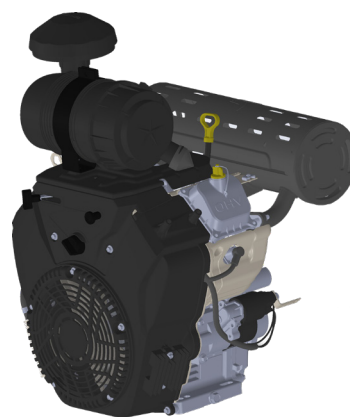
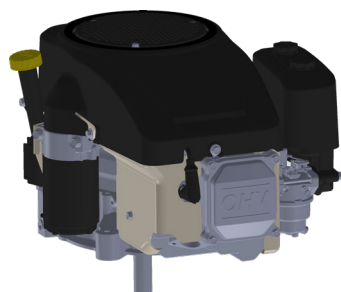
Brand	John Deere	John Deere	John Deere	John Deere
Model:	TX Gator	HPX Gator	QuikTrak Mowers	ZTrac Mowers
Kit Part Number:	CK-10104	CK-10103	Contact local Deere dealer for more info	Contact local Deere dealer for more info

**ONYX**  
TECHNOLOGY POWERING A CLEANER FUTURE

12605 Commerce Station Drive • Suite 700  
Huntersville, NC 28078  
704.827.9368



[onyxsolutions.com](http://onyxsolutions.com)



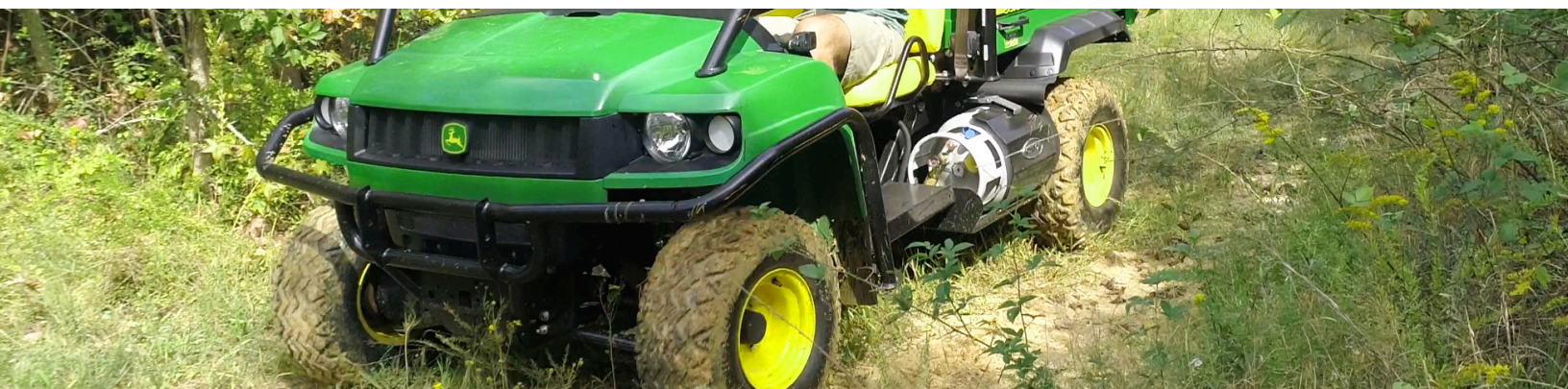
### MODEL:

**LX500**

**HX800**

**LX1100**

Type	Air-cooled, OHV	Air-cooled, V-twin OHV	Air-cooled, V-twin OHV
Orientation	Vertical Shaft	Horizontal Shaft	Vertical Shaft
Power	12 HP (9kW)	23 HP (17 kW)	31 HP (23 kW)
Displacement	452cc	764cc	999cc
Bore x Stroke	92 mm x 68 mm	80 mm x 76 mm	84.5 mm x 76 mm
Fuel System	3-Stage regulation	3-Stage regulation	3-Stage regulation
Fuel Type	LPG Vapor	LPG Vapor & Liquid	LPG Vapor & Liquid
Starter	Heavy Duty 12V Electric	Heavy Duty 12V Electric	Heavy Duty 12V Electric
Oil Capacity	1.2 Liters	1.8 Liters	2.4 Liters
Dry Weight	68 lb	108 lb	130 lb
Air Cleaner	Dual Element	Heavy Duty Canister OR Integrated/Slim	Heavy Duty Canister
Muffler	Low Tone Catalytic	Low Tone Catalytic	Low Tone Catalytic
Cylinder	Single, Hardened Cast Iron	V-Twin, Hardened Cast Iron	V-Twin, Hardened Cast Iron
Crankshaft	1" Keyed PTO	1-1/8 Keyed PTO	1-1/8 Keyed PTO







12605 Commerce Station Drive • Suite 700  
Huntersville, NC 28078  
704.827.9368



[onyxsolutions.com](http://onyxsolutions.com)