

ONLYX

TECHNOLOGY POWERING A CLEANER FUTURE

RX32

RIDE-ON FLOOR SCRUBBER

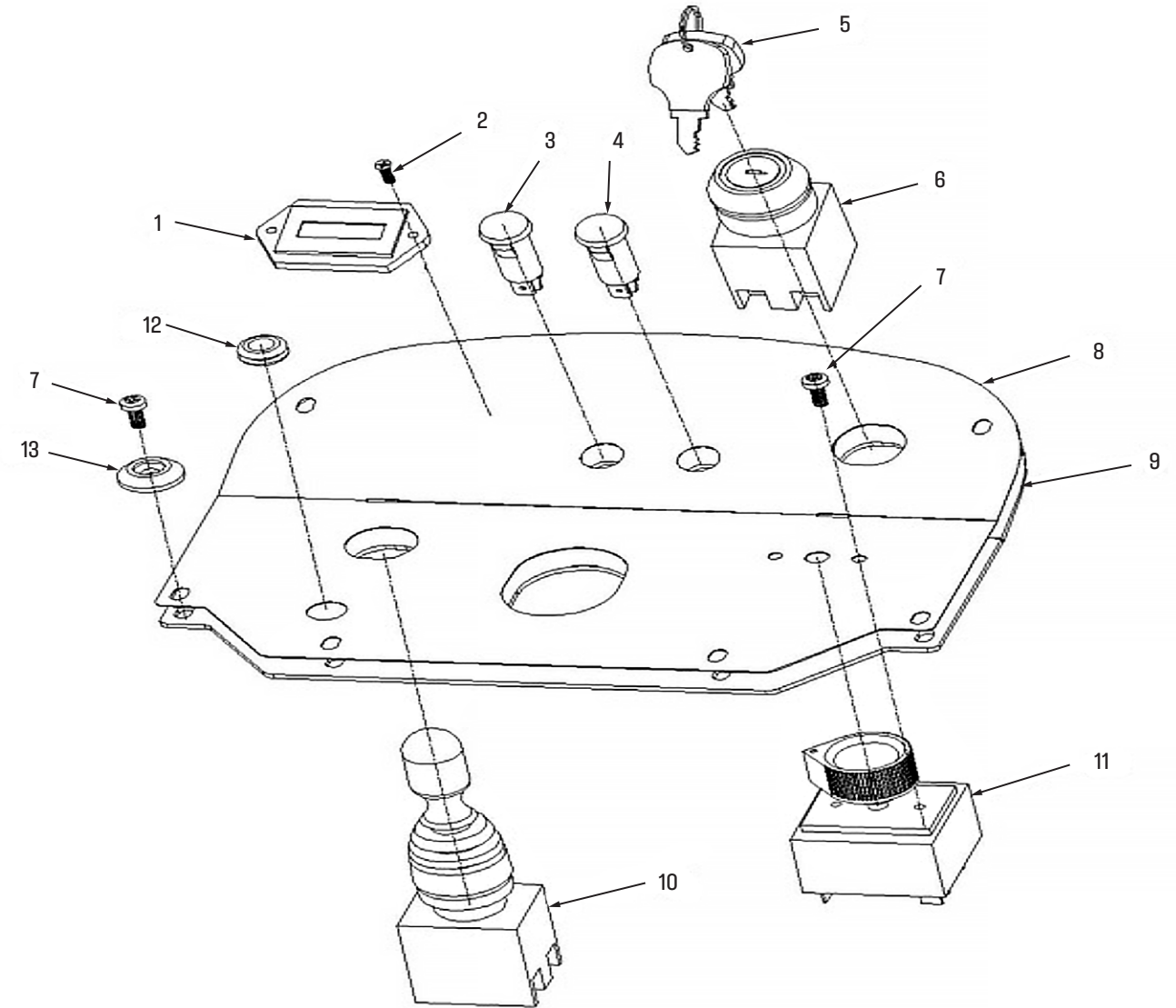
RX26

RIDE-ON FLOOR SCRUBBER



ILLUSTRATED PARTS LIST

Control Panel Group	3
Brush Group	4-5
Recovery Tank Group	6-7
Solution Tank Group	8-9
Head Group	10-11
Battery Group	12
Base Group	13
Drain Group	14
Rear Wheel Group	15
Front Wheel Group	16-17
Squeegee Assembly Group	18-19
Squeegee Lifting Group	20-21
Brush Lifting Group	22
Filter Group	23
RX30C Cylindrical Group	24-26
Wiring Diagram	27



How to order spare parts:

Parts and supplies may be ordered by phone, by fax or by email.

A. Identify the machine model

B. Identify the machine serial number

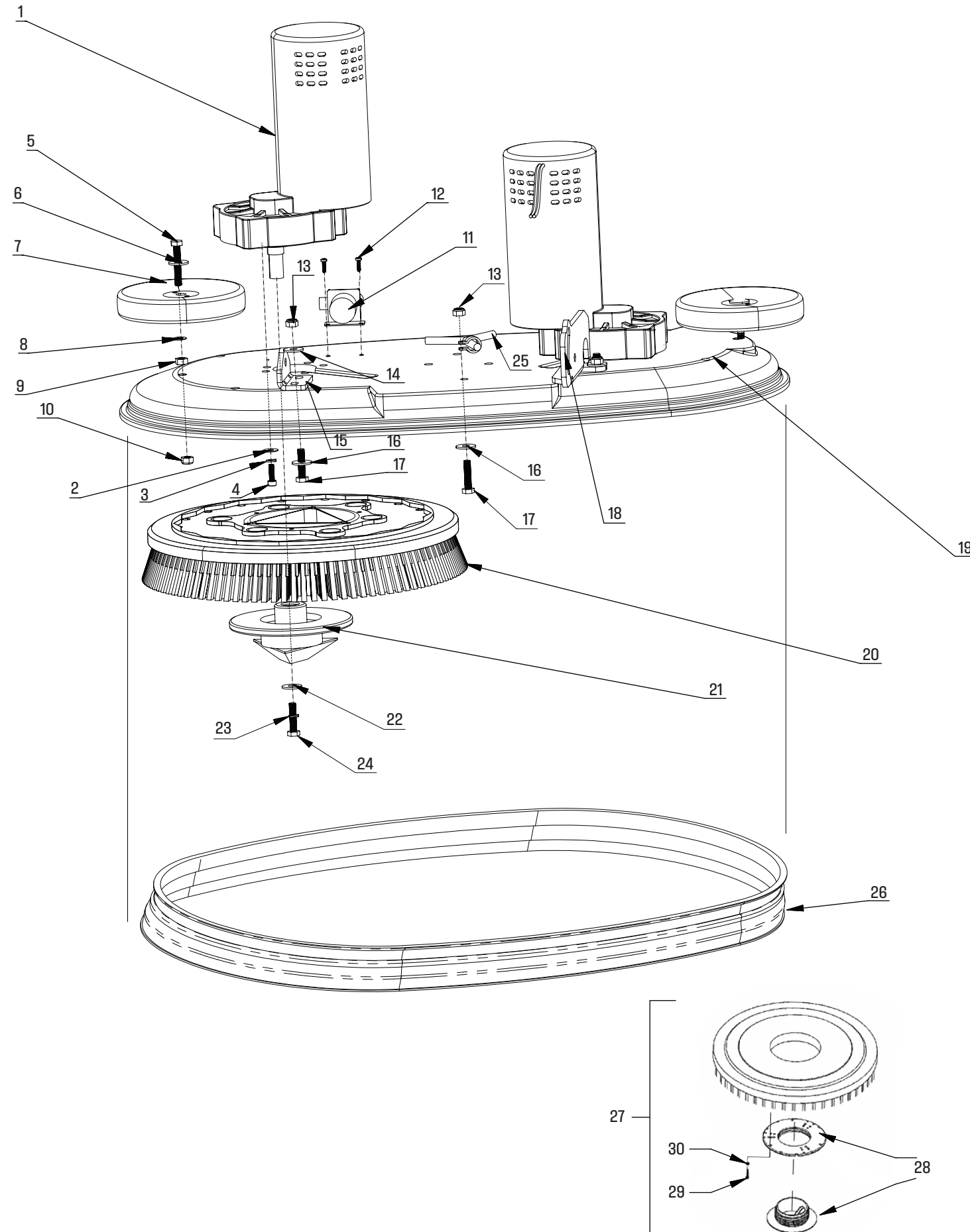
C. Provide the part number and quantity

Provide your detail logistic information

Provide your name, company name, shipping address, phone number and purchase order number.

No	Part No.	Description	Qty
1	W12064	Power meter-1	1
2	For Reference	Screw M3X10	2
3	W12065	Yellow Indicator Light	1
4	W12066	Red Indicator Light	1
5	W10853	Key	1
6	W10817	Lock	1
7	For Reference	Screw M4X10	8
8	W12069	Panel Sticker	1
9	W12070	Panel	1
10	W12071	Forward/backward switch	1
11	W12072	Rotary Switch	1
12	W12073	Rubber ring	1
13	W12111	Plastic Washer D5-D20-5	6

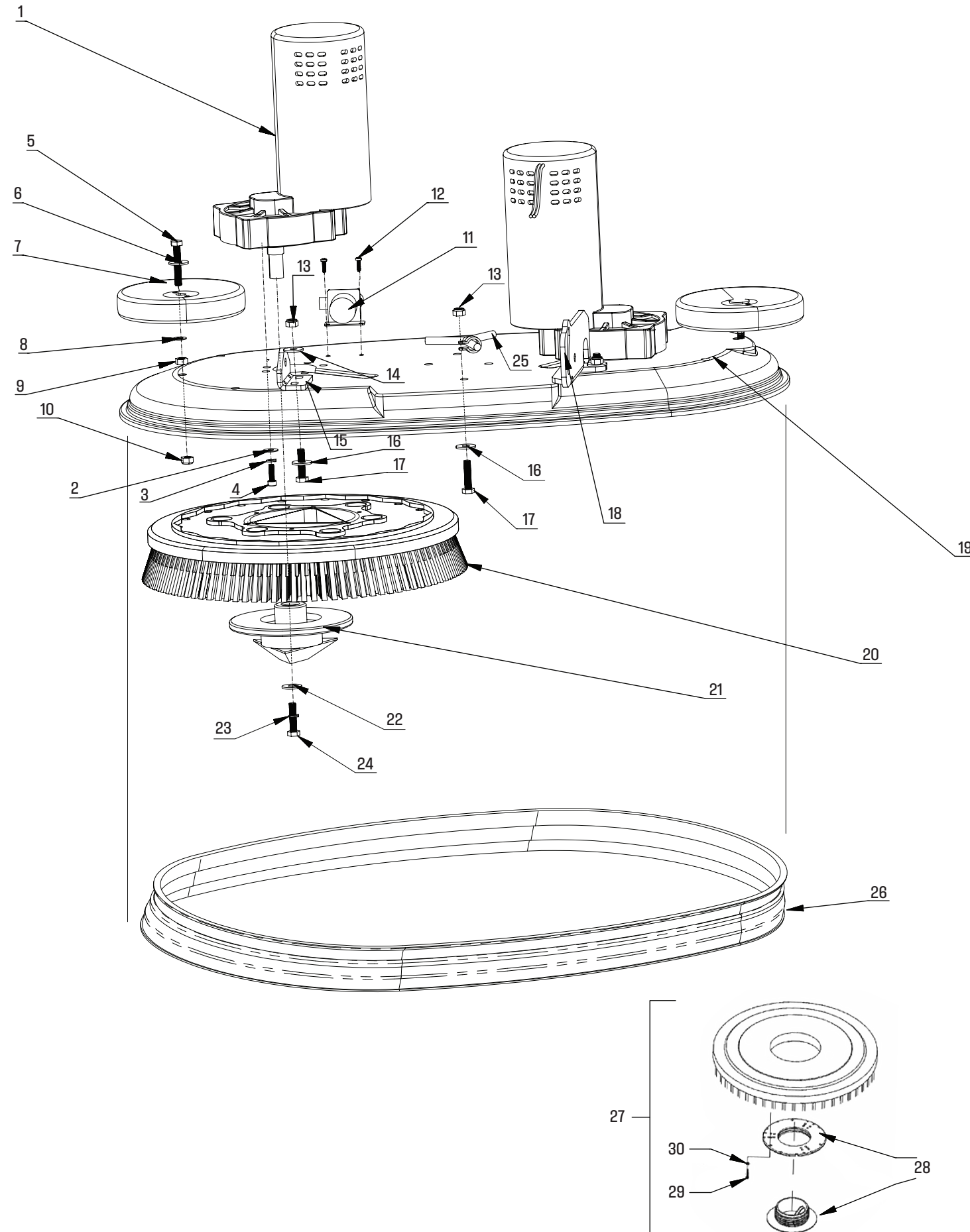
BRUSH GROUP - RX26



BRUSH GROUP - RX26

No	Part No.	Description	Qty
1	W12001	Brush Motor HY224/TDS-001	1
2	For Reference	Washer	14
3	For Reference	Spring Washer	14
4	For Reference	Screw M6X20	14
5	W12138	Screw M8X50	2
6	W13137	Washer and Sleeve	2
7	W10843	Bumper Wheel	2
8	W11076	M8 Washer	2
9	For Reference	Nut	2
10	W12263	Nut, anti-skid	2
11	W10818-B	Solenoid Valve	1
12	For Reference	5×10 Screw, cross-shaped	2
13	W12263	Nut, anti-skid	5
14	W12301	M8 Washer	5
15	W12004	Brush Rocker Group 5	1
16	W12301	M8 Washer	5
17	W12598	M8*35 Bolt	5
18	W12005	Brush Rocker Group 6	1
19	W12006	Brush Cover, 26"	1
20	W10880	Brush 13" Standard Stiffness	2
	W10881	Brush 13" Extra Stiff	
21	W10813	Triangle Driver	2
22	W12009	Washer	2
23	W12010	Washer	2
24	W12011	Screw M8×20	2
25	W10982	Tee Connection	1
26	W10883	Brush Skirt, 26"	1
27	W10882	Pad Driver, 13"	1
28	W13211	Pad Holder, Clip & Housing (Current, replaces W10848)	1
29	For Reference	Screw, m4x25	1
30	For Reference	Washer m4	1

BRUSH GROUP - LEGACY RX32



BRUSH GROUP - LEGACY RX32

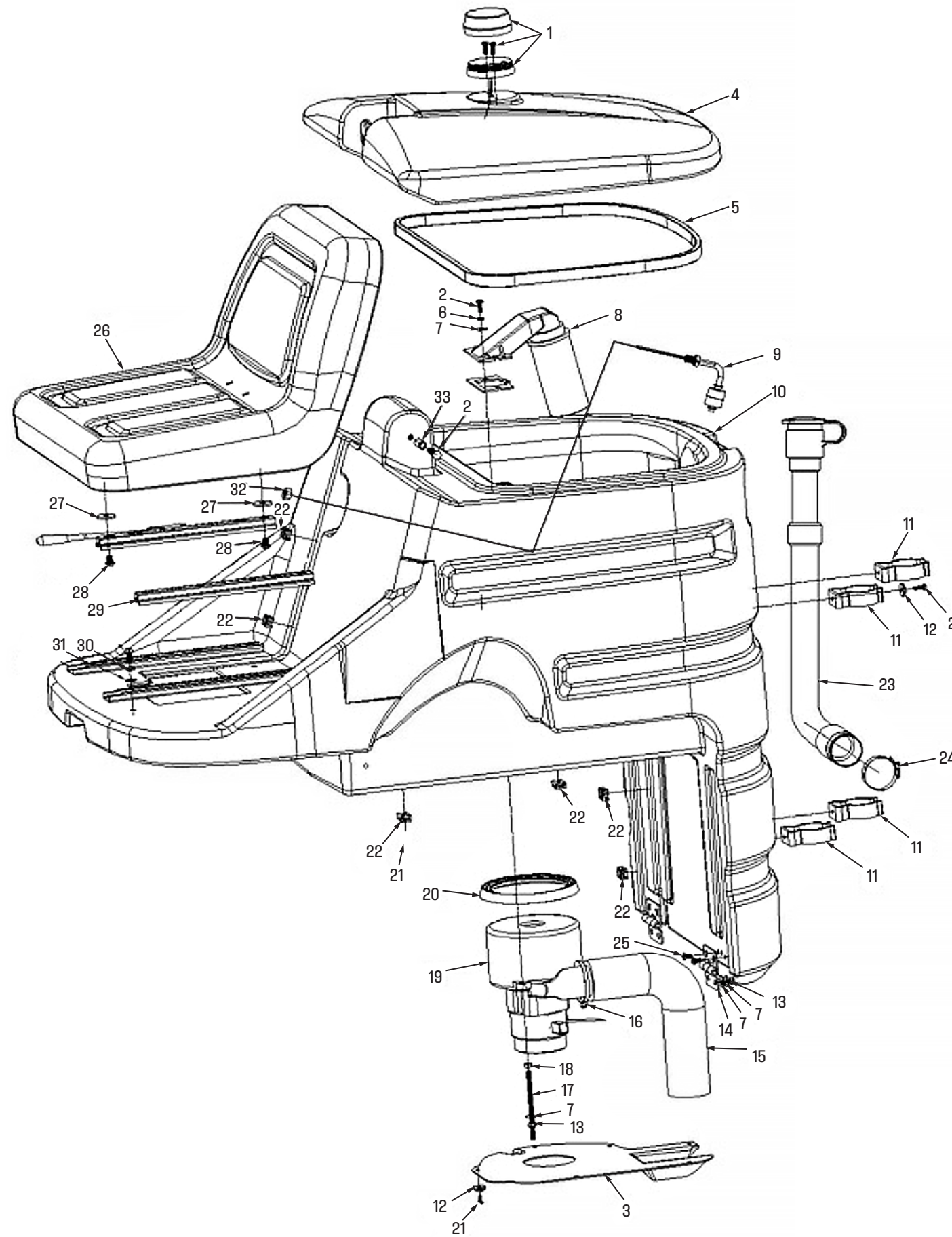
No	Part No.	Description	Qty
1	W12001	Brush Motor HY224/TDS-001	1
2	For Reference	Washer	14
3	For Reference	Spring Washer	14
4	For Reference	Screw M6X20	14
5	W12138	Screw M8X50	2
6	W13137	Washer and Sleeve	2
7	W10843	Bumper Wheel	2
8	W11076	M8 Washer	2
9	For Reference	Nut	2
10	W12263	Nut, anti-skid	2
11	W10818-B	Solenoid Valve	1
12	For Reference	5×10 Screw, cross-shaped	2
13	W12263	Nut, anti-skid	5
14	W12301	M8 Washer	5
15	W12004	Brush Rocker Group 5	1
16	W12301	M8 Washer	5
17	W12598	M8*35 Bolt	5
18	W12005	Brush Rocker Group 6	1
19	W12006	Brush Cover, 30" (Old Version)	1
20	W10806	Brush 15" Standard Stiffness	2
	W10879	Brush 15" Extra Stiff	
21	W10813	Triangle Driver Flange	2
22	W12009	Washer	2
23	W12010	Washer	2
24	W12011	Screw M8×20	2
25	W10982	Tee Connection	1
26	W10808	Brush Skirt, 30"	1
27	W10807	Pad Driver, 15"	1
28	W10848	Pad Holder Assy, Clip & Housing (Legacy)	1
29	For Reference	Screw, m4x25	1
30	For Reference	Washer m4	1

If the serial number of your machine ends in the letter "T", use the item numbers below:

19	W12700	Brush Cover, 32"	1
20	W12701	Brush 16" Standard Stiffness	1
	W12702	Brush 16" Extra Stiff	1
26	W12704	Brush Skirt, 32"	1
27	W12703	Pad Driver, 16"	1
28	W13211	Pad Holder, Clip & Housing (Current, replaces W10848)	

RECOVERY TANK GROUP

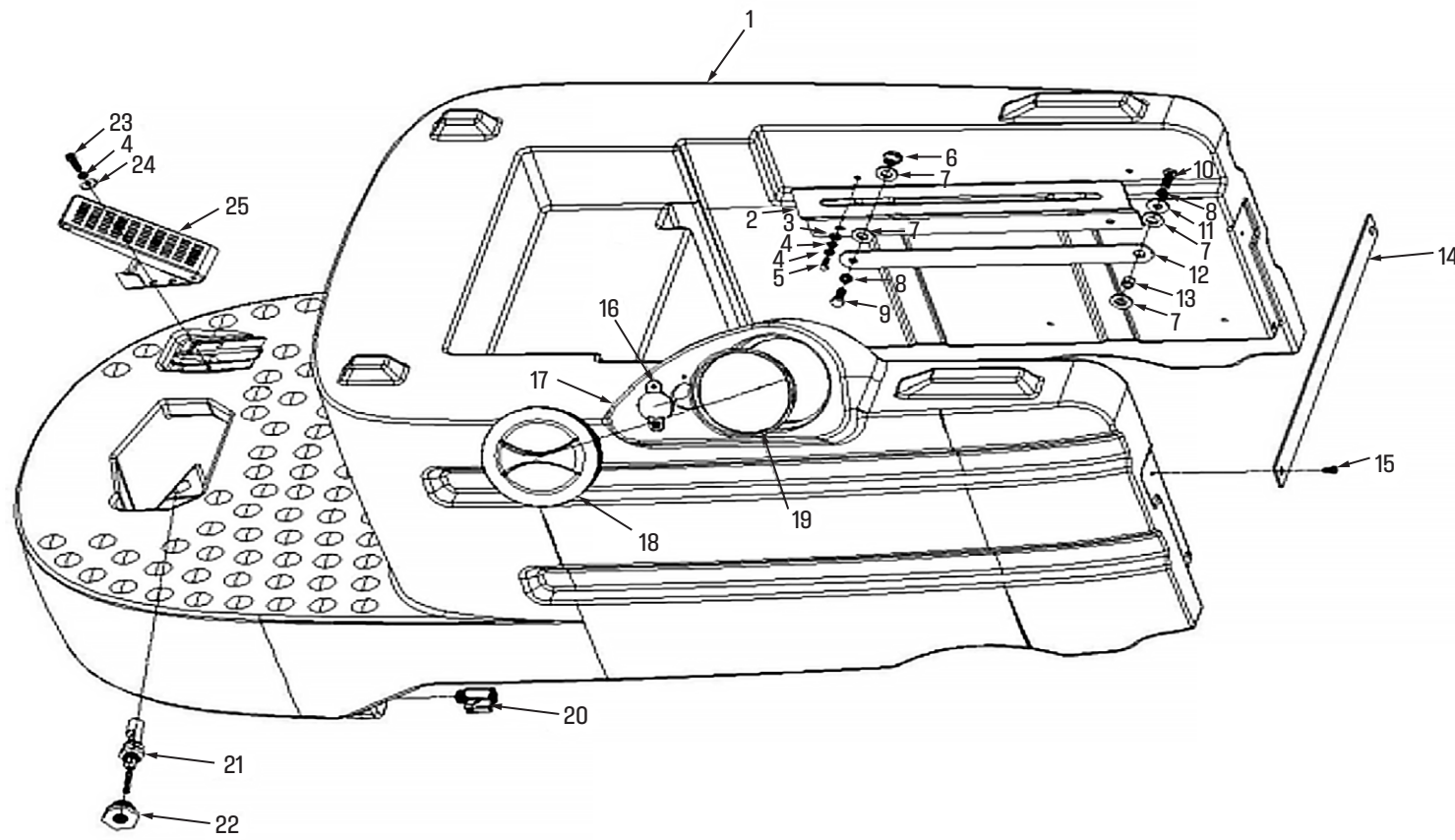
RECOVERY TANK GROUP



No	Part No.	Description	Qty
1	W12012	Light 24v-1	1
2	For Reference	Screw M8×35	2
3	W12013	Vacuum motor Muffer	1
4	W12014	Recovery tank Cover	1
5	W10825	Seal, Recovery tank Cover	1
6	For Reference	Spring Washer D6	2
7	For Reference	Washer D6 D18	13
8	W10851	Floating ball assembly-1	1
9	W12018	Level switch-1, stainless steel	1
10	W12019	Recovery tank	1
11	W10839	Hose Clip-1	4
12	For Reference	Washer D5-D20-5	10
13	For Reference	Lock Nut M6	7
14	W12021	Hinge 66-38	2
15	W10954	Vacuum Noise	1
16	For Reference	Strip 5MM	1
17	W11020	Screw M6X110	3
18	For Reference	Nut M6	3
19	W10822	Vacuum Motor 24V-1	1
20	W12024	Seal-1, Vacuum motor	1
21	For Reference	Screw M4X10	1
22	W12025	Wire Supporting Frame-1,	1
23	W12026	Drain pipe D38-890	1
24	W12573	Worm Gear Clamp 40-64mm	1
25	For Reference	Screw M6×10	1
26	W12028	Seat	1
27	For Reference	Washer D8D28	4
28	For Reference	Screw M8×10	4
29	W12030	Seat Slide Rail, Both Sides	4
30	W12029	Seat Slide Base, Both Sides	4
31	For Reference	Washer D8D16	1
32	For Reference	Nut M10	1
33	For Reference	Shaft Sleeve D12D9-24	21

SOLUTION TANK GROUP

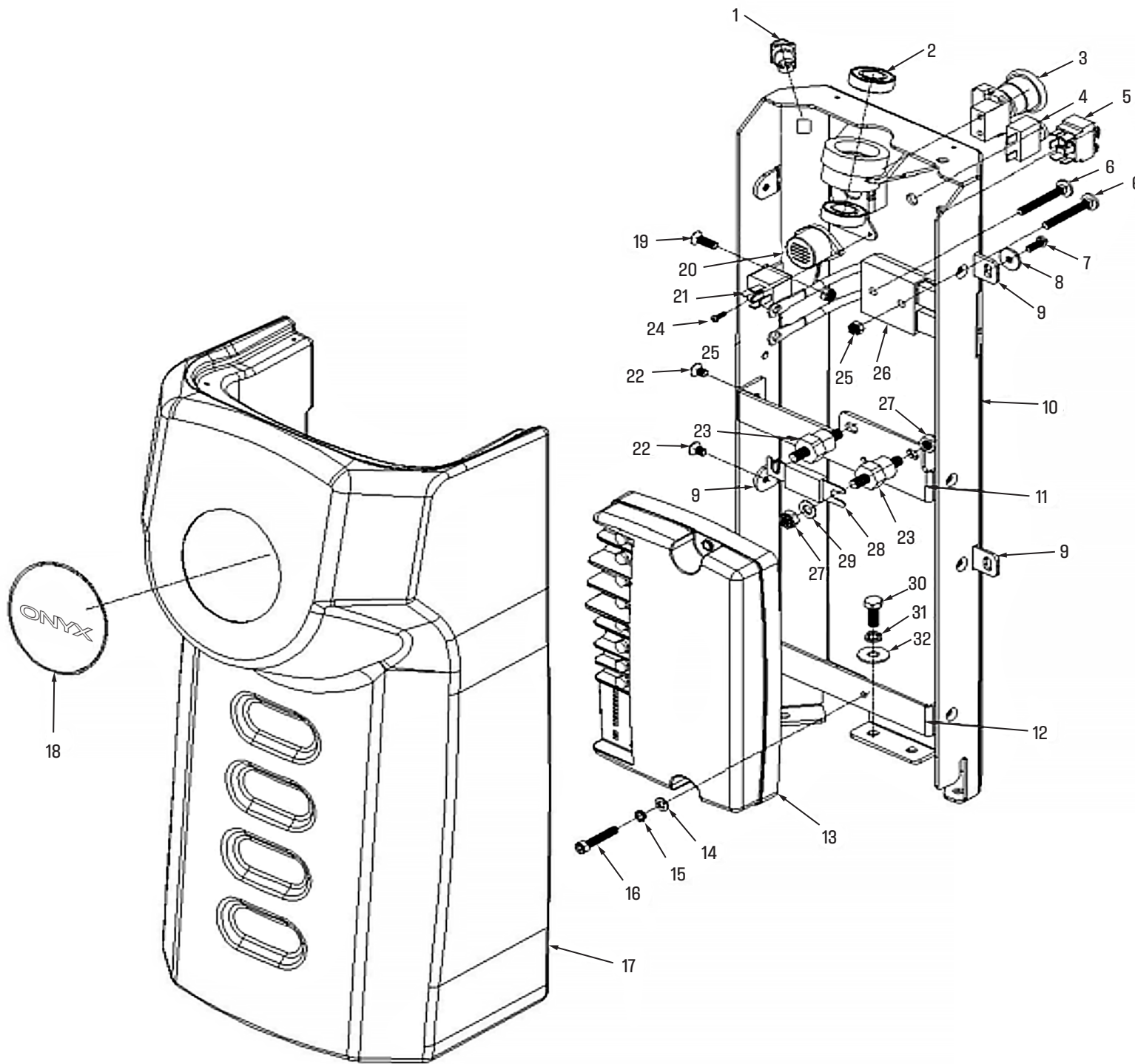
SOLUTION TANK GROUP



No	Part No.	Description	Qty
1	W12032	Solution Tank	1
2	W12033	Slide Rail for Recovery tank	1
3	For Reference	Washer M6	2
4	For Reference	Spring Washer M6	6
5	For Reference	ScrewM5×15	2
6	For Reference	T nut M8-D12	1
7	W12300	Plastic Washer D12D24	4
8	W12301	M8 Washer	2
9	For Reference	Screw M8×20	1
10	W12011	M8*20 Bolt	1
11	W12300	M8 Nylon Washer	1
12	W12034	Bracke for Recovery tank	1
13	W11082	Sleeve D12D9-9	1
14	W12036	Connectiion plate, Solution Tank	1
15	For Reference	Screw M5×10	1
16	W11034	Small Cap, Solution Tank	1
17	For Reference	Screw M4×15	1
18	W10877	Large Cap, Slotion Tank	1
19	W10830	Fresh water fliter Screen D112	1
20	W12335	Water Valve 3/8"-304	1
21	W12618	Plastic level switch-1	1
22	W12042	Thread M28-M16, inside	1
23	W12043	Screw M8×25	1
24	W12044	Washer D6×D18	2
25	W12045	Accelerator	1

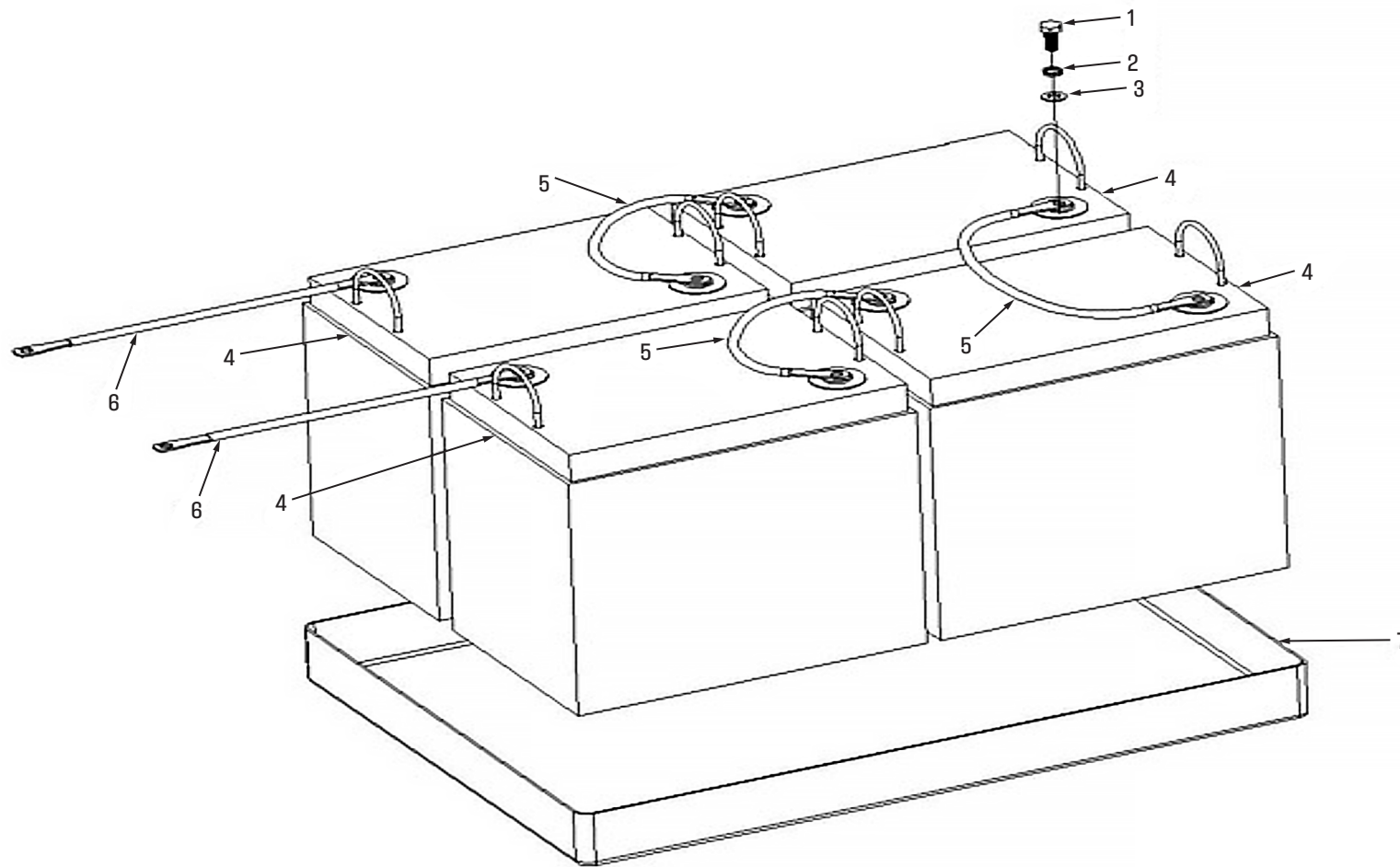
HEAD GROUP

HEAD GROUP



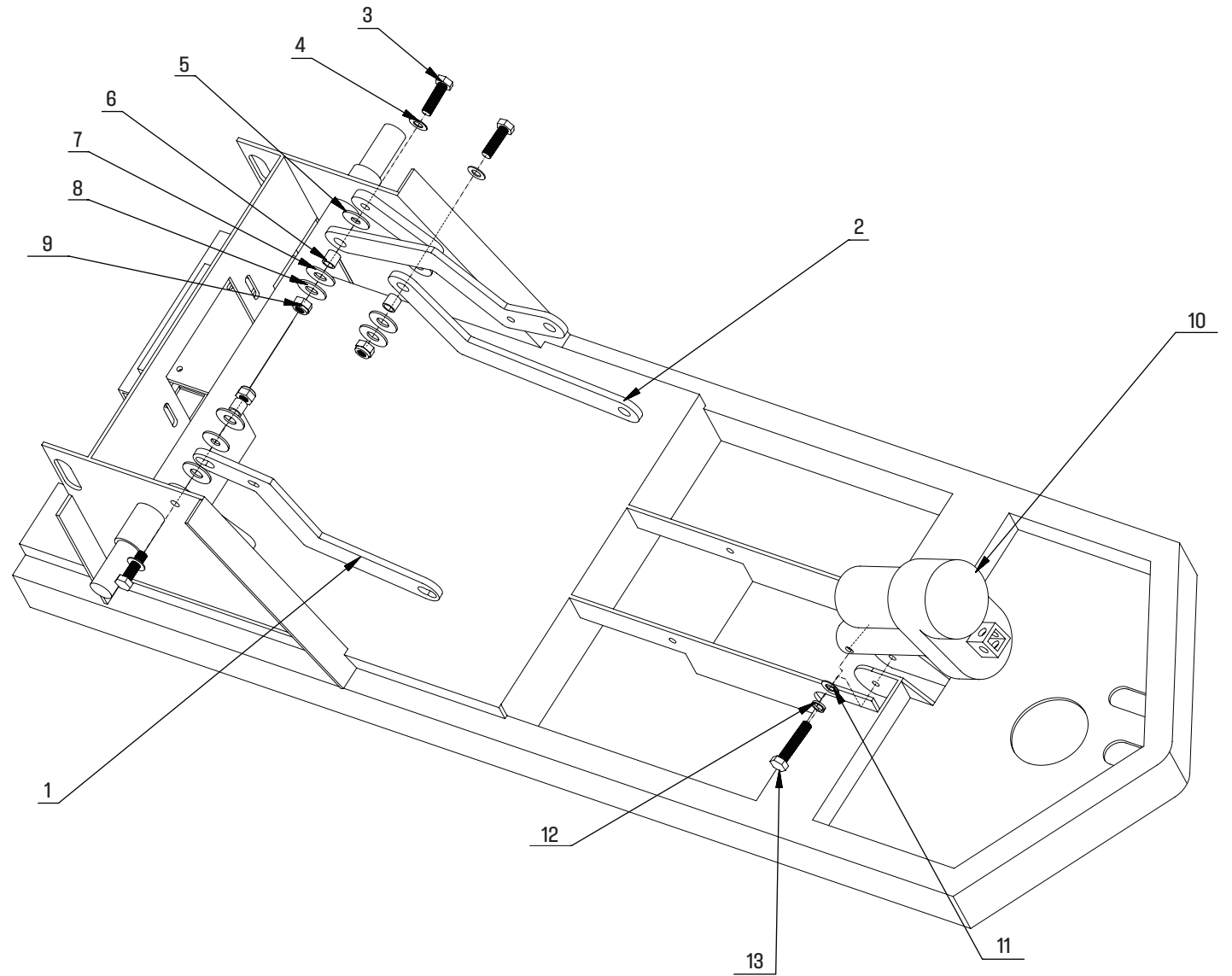
No	Part No.	Description	Qty
1	W12325	Alarm button	1
2	W12047	Bearing 6003-D35D17-10	72
3	W12205	Emergency stop button	1
4	W10816-5A	Thermal Protection-5A	1
5	W12050	Brush Pressure Switch	1
6	For Reference	Screw M6×50	2
7	For Reference	Screw M5X15	4
8	For Reference	Platics Washer D5-D20-5	4
9	W12051	Front colour lock piece	4
10	W12052	Front colour metal piece	1
11	W12053	Controller fixing plate, top	1
12	W12054	Controller fixing plate, bottom	1
13	W12055	Controller TRID-HD-150/J150-51088-HY	1
14	W12292	M6 Washer	2
15	For Reference	Spring Washer D6	2
16	For Reference	Screw M6X35	2
17	W12056	Front Colour	1
18	W12057	Logo sticker D100	1
19	For Reference	Screw M6X20	1
20	W12209	Buzzer-1	1
21	W12059	Realy 24V-1	1
22	For Reference	Screw M6X10	6
23	W11062	Terminal Post	2
24	For Reference	Screw M3X10	2
25	For Reference	Anti-skid nut M6	3
26	W10820	power socket	1
27	W12263	Anti-skid nut M8	4
28	W10819-150A	Fuse 150A	1
29	For Reference	Washer D8XD16	2
30	W12011	M8*20 Bolt	4
31	W12010	M8 Spring Washer	4
32	W12301	M8 Washer	4

BATTERY GROUP



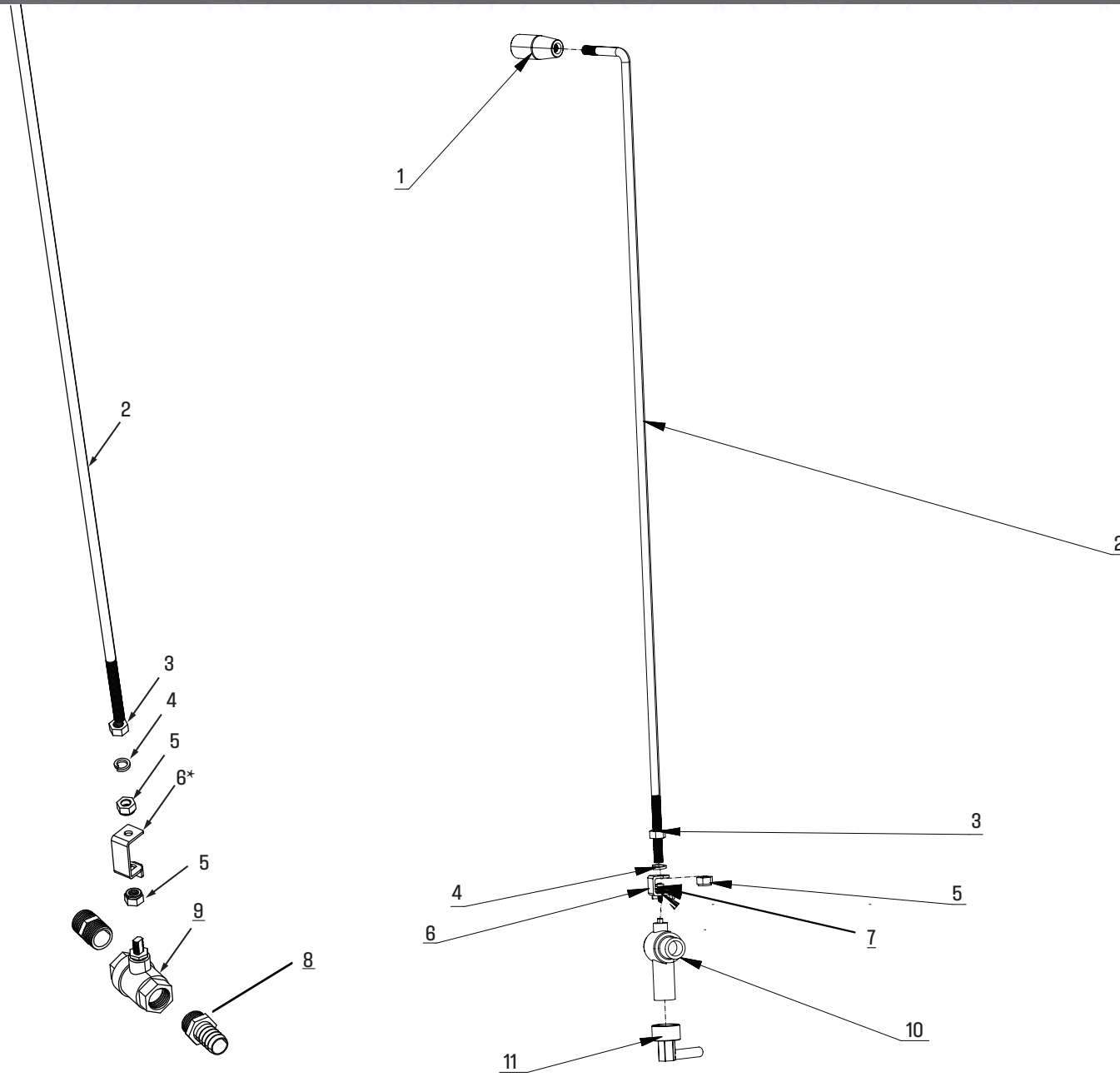
No	Part No.	Description	Qty
1	For Reference	Screw M10×45	8
2	For Reference	Spring Washer D8	8
3	For Reference	Washer D8×D16	8
4	QX6V270	Battery, 6V 270 Ah	4
5	W11145	Battery wiring-1	3
6	W12077	Battery wiring-2	2
7	W12078	Battery tray	1
8	QXC24V25	Battery Charger - 24V/25A	1
9	W10820	Charger Socket, Large	1

BASE GROUP



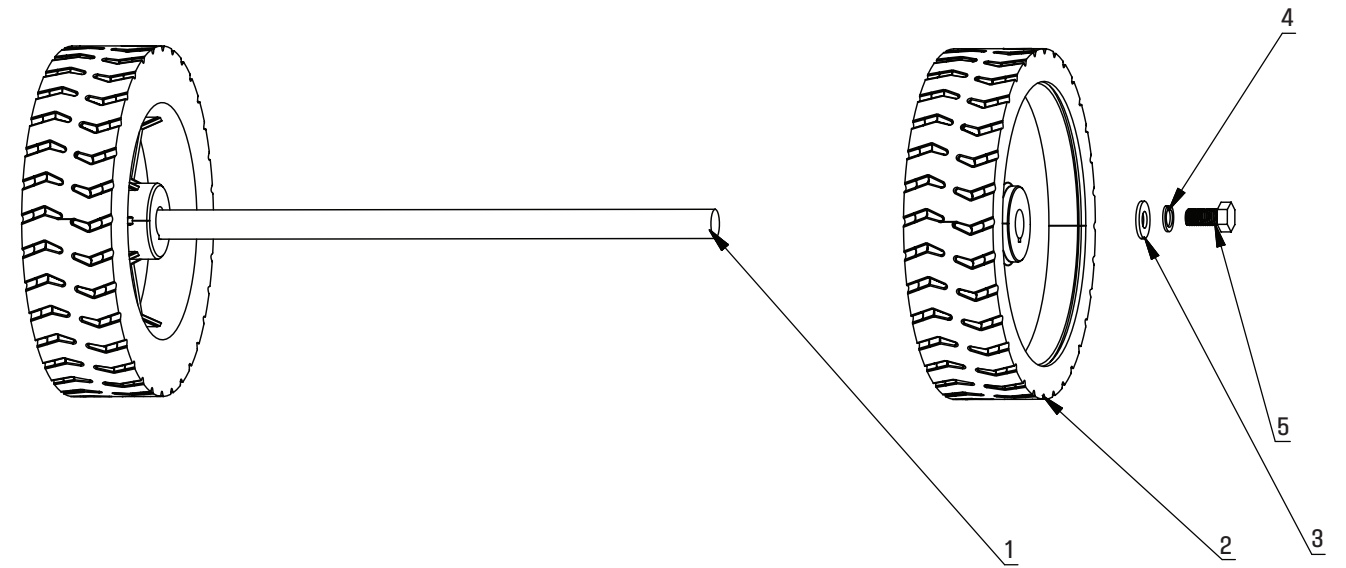
No	Part No.	Description	Qty
1	W12079	Upper Rocker, left and right side	1
2	W12081	Lower Rocker, Left side	1
3	For Reference	Hex Bolt 10×45	3
4	For Reference	Washer	3
5	W12300	Nylon washer	3
6	W12082	Copper sleeve	3
7	W12300	Nylon washer	3
8	For Reference	Washer	3
9	For Reference	Anti-skid nut M10	3
10	W12083	Lifting motor, brush	3
11	For Reference	Washer	1
12	For Reference	Spring washer	1
13	W12084	M8*50 Bolt	1

DRAIN GROUP



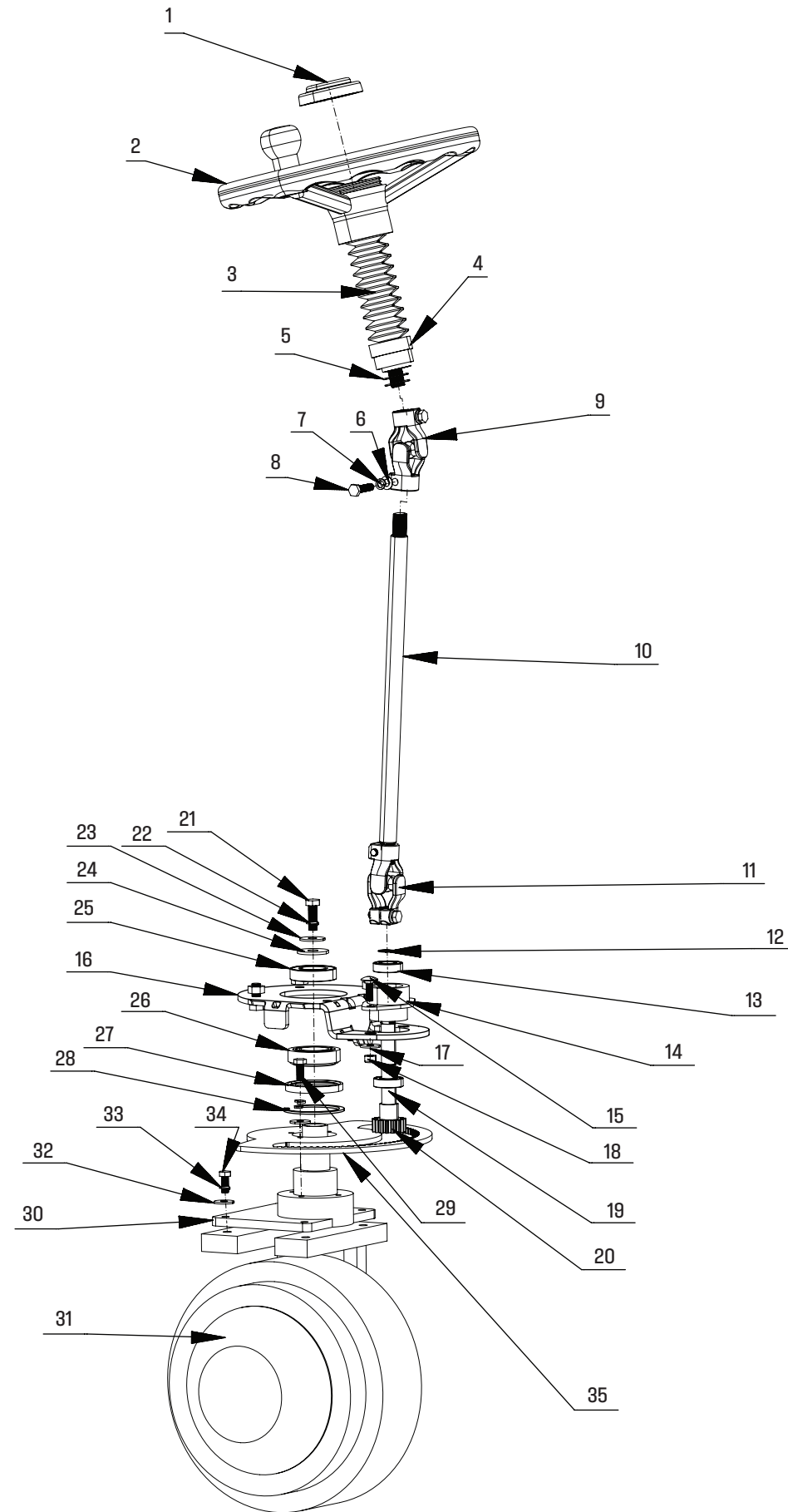
No	Part No.	Description	Qty
1	W12227	Water lever handle-01	1
2	W12086	Water lever	1
3	W12263	M8 Nut	1
4	W12010	Spring washer D8	1
5	W12263	Anti-skid nut M8	1
6	W12087	Bracket of Water lever (Angled Valve)	1
6*	W13140	Bracket of Water lever (Straight Valve)	1
7	For Reference	3×15 Screw	1
8	W12586	1/2 Brass Joint x 16mm barb	1
9	W10988	Straight Water Valve	1
10	W12088	Angled Water Valve	1
11	W12089	Cooper elbow	1

REAR WHEEL GROUP



No	Part No.	Description	Qty
1	W12111	Rear Wheel Shaft	11
2	W12112	Rear Wheel	2
3	For Reference	Washer	2
4	For Reference	Spring	2
5	For Reference	Screw M10×25	2

FRONT WHEEL GROUP

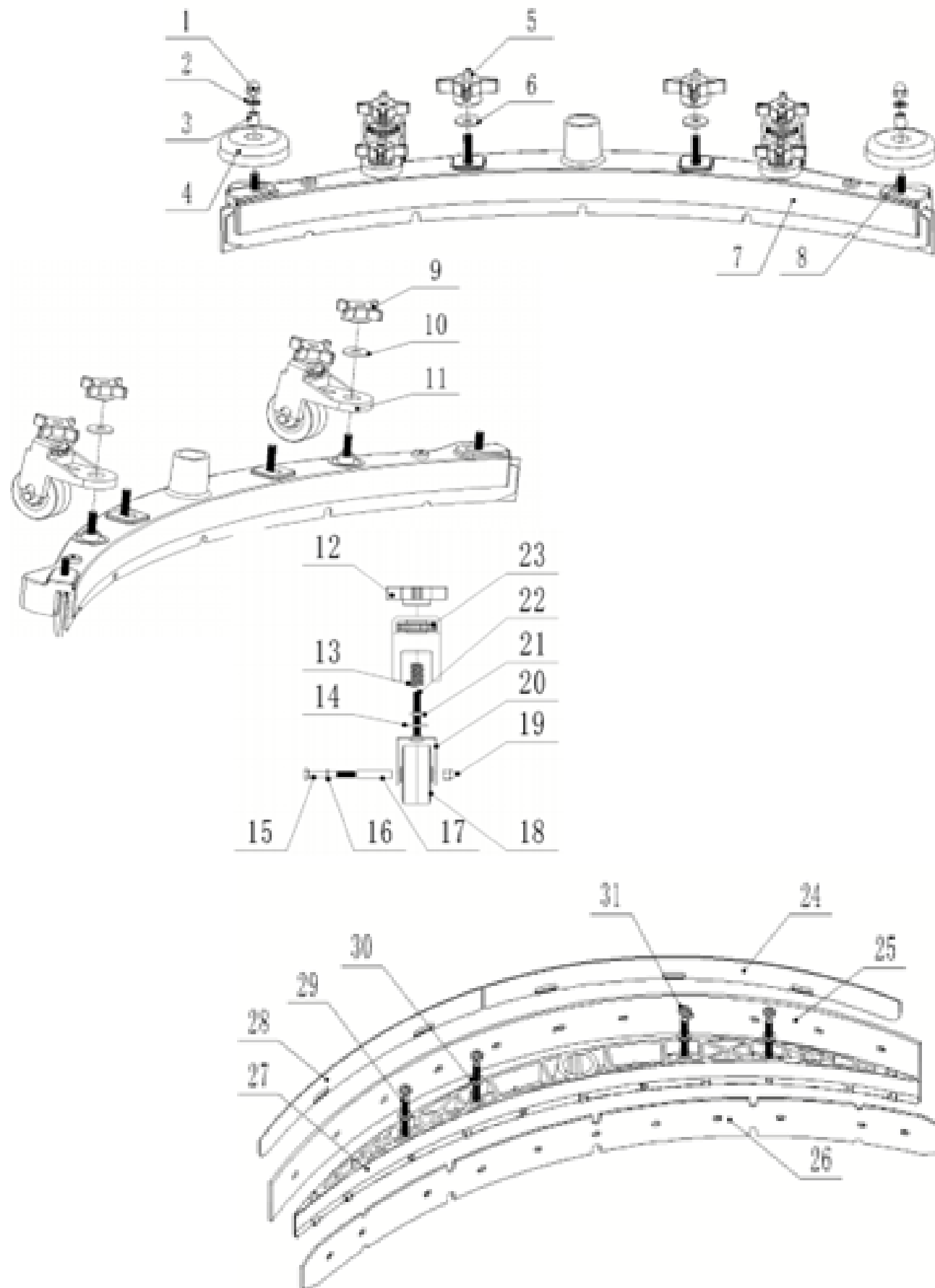


FRONT WHEEL GROUP

No	Part No.	Description	Qty
1	W12090	Cover,Steering Wheel	11
2	W12091	Steering wheel	1
3	W12092	Protecting Bush-1	1
4	W12093	Shaft, steering wheel	1
5	For Reference	Washer D16D30-1	1
6	W11076	M8 Washer	4
7	W12010	M8 Spring Washer	4
8	For Reference	Screw M8X30	4
9	W12094	Cardan Joint	1
10	W12095	Shaft, Steering wheel	1
11	W12094	Cardon Joint	1
12	W12097	Clamp spring D17	1
13	W12047	Bearing 6003-D35D17-1	1
14	W12099	Gear support	1
15	W12043	M6*20 Bolt	1
16	W12100	Supporting Seat of bearing	1
17	W12301	M8 Washer	1
18	For Reference	M6 Lock Nut	1
19	W12047	Bearing 6003-D35D17-10	1
20	W12102	Gear Shaft	1
21	For Reference	Screw M10X30	1
22	For Reference	Spring Washer	1
23	For Reference	Washer	1
24	For Reference	Washer	1
25	W12103	Bearing 6006-D55D30-13	1
26	W12104	Bearing 32007X-D62D35-18	1
27	W12105	Oil seal TC 52-68-8	1
28	W12106	Inner Clamp spring D68	1
29	W12107	M6x20 Spring Washer	3
30	W12108	Fixing plate, front wheel	1
31	W12109	Front wheel with traction motor	1
32	For Reference	Washer	4
33	For Reference	Spring Washer	4
34	For Reference	Screw 10x30	4
35	W12110	Gear plate	1

SQUEEGEE ASSEMBLY GROUP - RX26 / MEDIUM

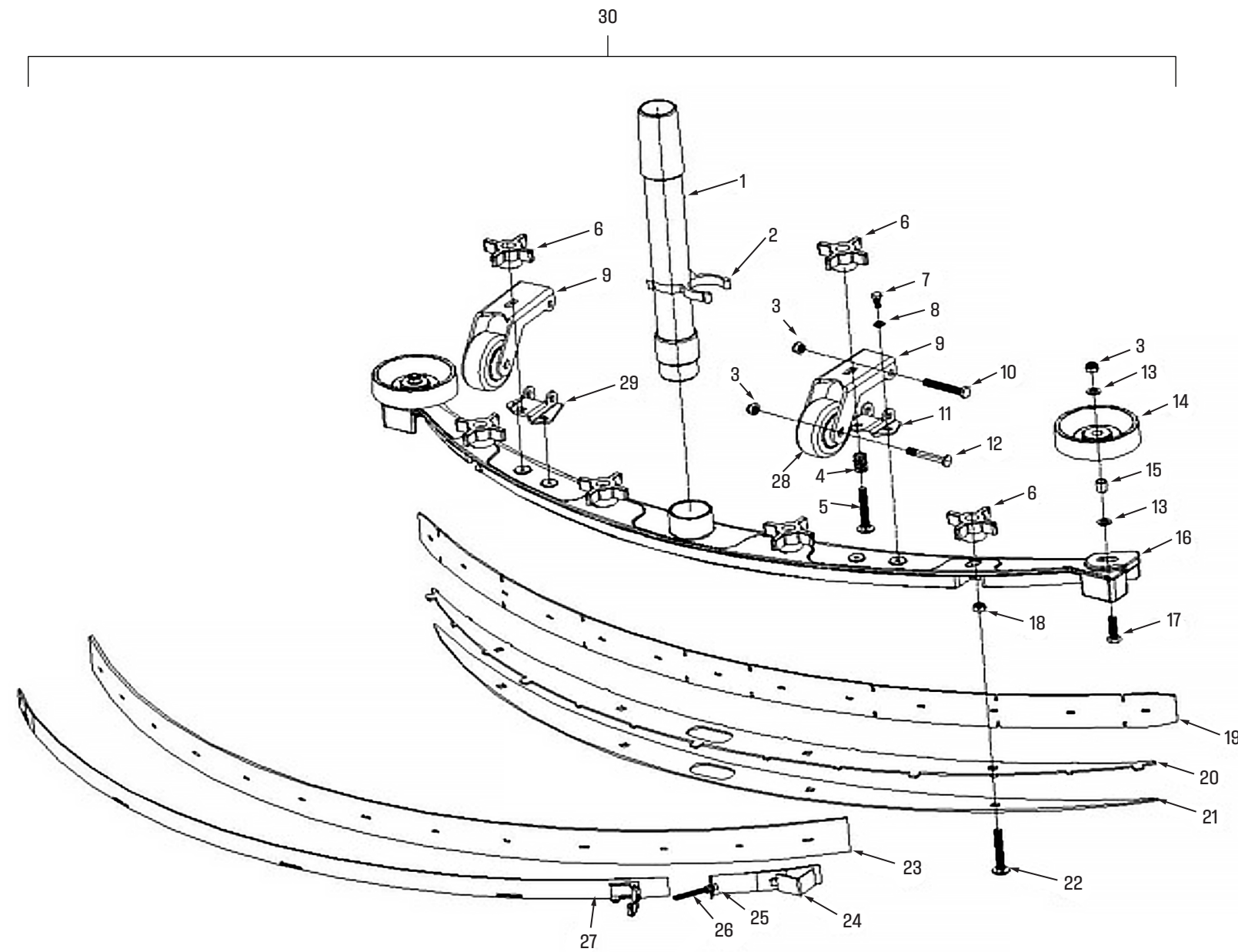
SQUEEGEE ASSEMBLY GROUP - RX26 / MEDIUM



No.	Part No.	Description	Qty
1	For Reference	M8 bolt	2
2	For Reference	M8 washer	2
3	For Reference	Bush	2
4		Bumper Wheer	2
5		Star Knob, Small	2
6	For Reference	M8 Large washer	2
7		Squeegee Frame, Aluminium	1
8	For Reference	Bolt M8*25	2
9	For Reference	Star Knob, Small	2
10	For Reference	M8 Large washer	2
11		Squeegee Wheel Bracket, with wheel	2
12	For Reference	Star Knob, Small	2
13		Spring	2
14	For Reference	M10 washer	2
15	For Reference	Bolt M6*40	2
16	For Reference	M6 Spring Washer	2
17	For Reference	Bush, Squeegee Wheel	2
18		Squeegee Wheel	2
19	For Reference	M6 Bolt	2
20		U bracket	2
21	For Reference	M6 Nut	2
22	For Reference	M6*50 Bolt	2
23	For Reference	M8 Knurled Nut, Plastic	2
24		Rear Blade Strip (Long)	1
25	W13824	Squeegee Blade - Rear	1
26	W13823	Squeegee Blade - Front	1
27		Squeegee Blade Fxing Frame	1
28		Rear Blade Strip (Short)	1
29	For Reference	Hex Head Bolt M8*70	4
30	For Reference	M8 Washer	4
31	For Reference	M8 Bolt	4
N/A	W13560	Squeegee Assembly, 36" (Medium)	1

SQUEEGEE ASSEMBLY GROUP - RX32

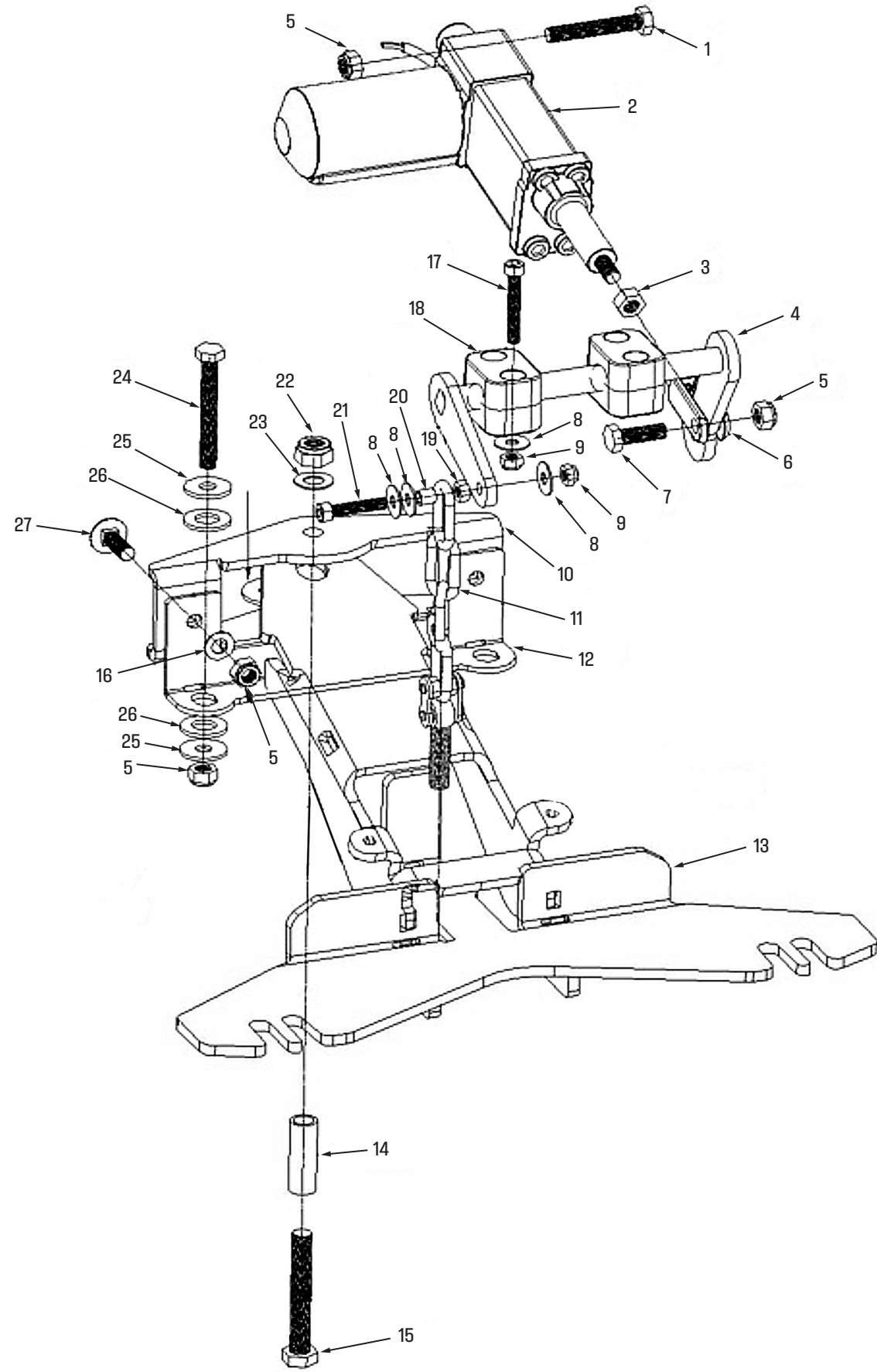
SQUEEGEE ASSEMBLY GROUP - RX32



No	Part No.	Description	Qty
1	W12119	Suction Hose D38-1640	1
2	W10590	Velcro Strap	1
	W12027	Hard X-clip	1
3	W12263	Anti-skid Nut M8	6
4	W11153	Spring D15D2-24	2
5	W12312	Screw M8×60	2
6	W10985	Star Knob-1	6
7	For Reference	Screw M8×15	2
8	For Reference	Washer D6D12	2
9	W11154	Wheel bracket, squeegie	2
10	W12084	M8*55 Bolt	2
11	W11155	Bracket, squeegie wheel	1
12	W12084	M8*55 Bolt	2
13	W12301	Washer	4
14	W10845	Bumper wheel -1	2
15	W11156	Sleeve D12D9-13	2
16	W10932	Squeegie Frame	1
17	For Reference	Screw M8×30	1
18	W12263	Nut M8	4
19	W10809	Front blade	1
20	W11157	Upper fixing piece, blade	1
21	W11158	Lower fixing piece, blade	1
22	W12312	Screw M8×60	4
23	W10810	Rear blade	1
24	W11159	Rear Blade fixing piece, right	1
25	For Reference	Screw M5×50	1
26	For Reference	Nut M5	1
27	W11160	Rear Blade fixing piece, left	1
28	W11161	Squeegie Wheel	2
29	W11162	Frame seat, Squeegie wheel	1
30	W10875	Squeegie Assembly 46"	1

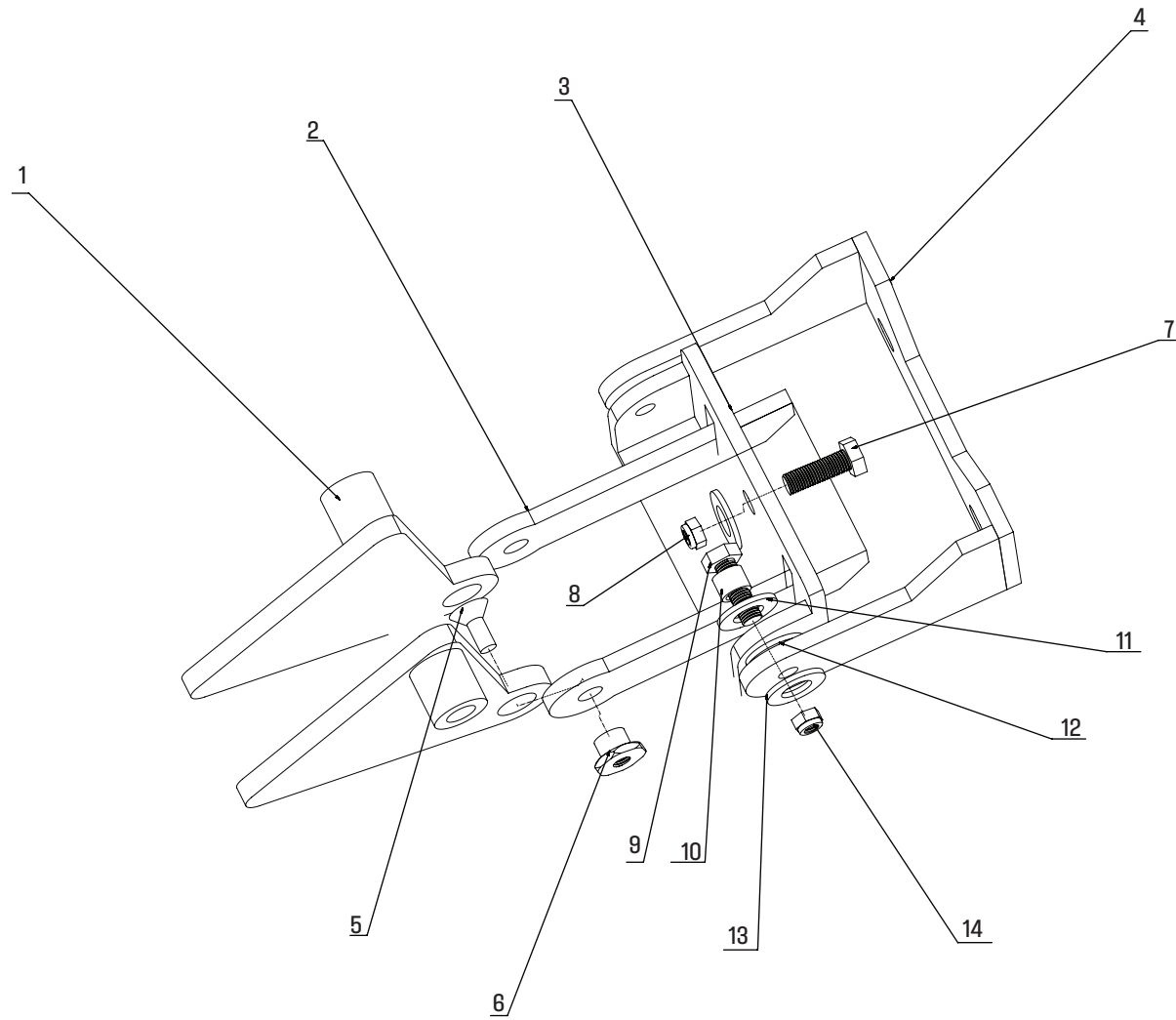
SQUEEGEE LIFTING GROUP

SQUEEGEE LIFTING GROUP



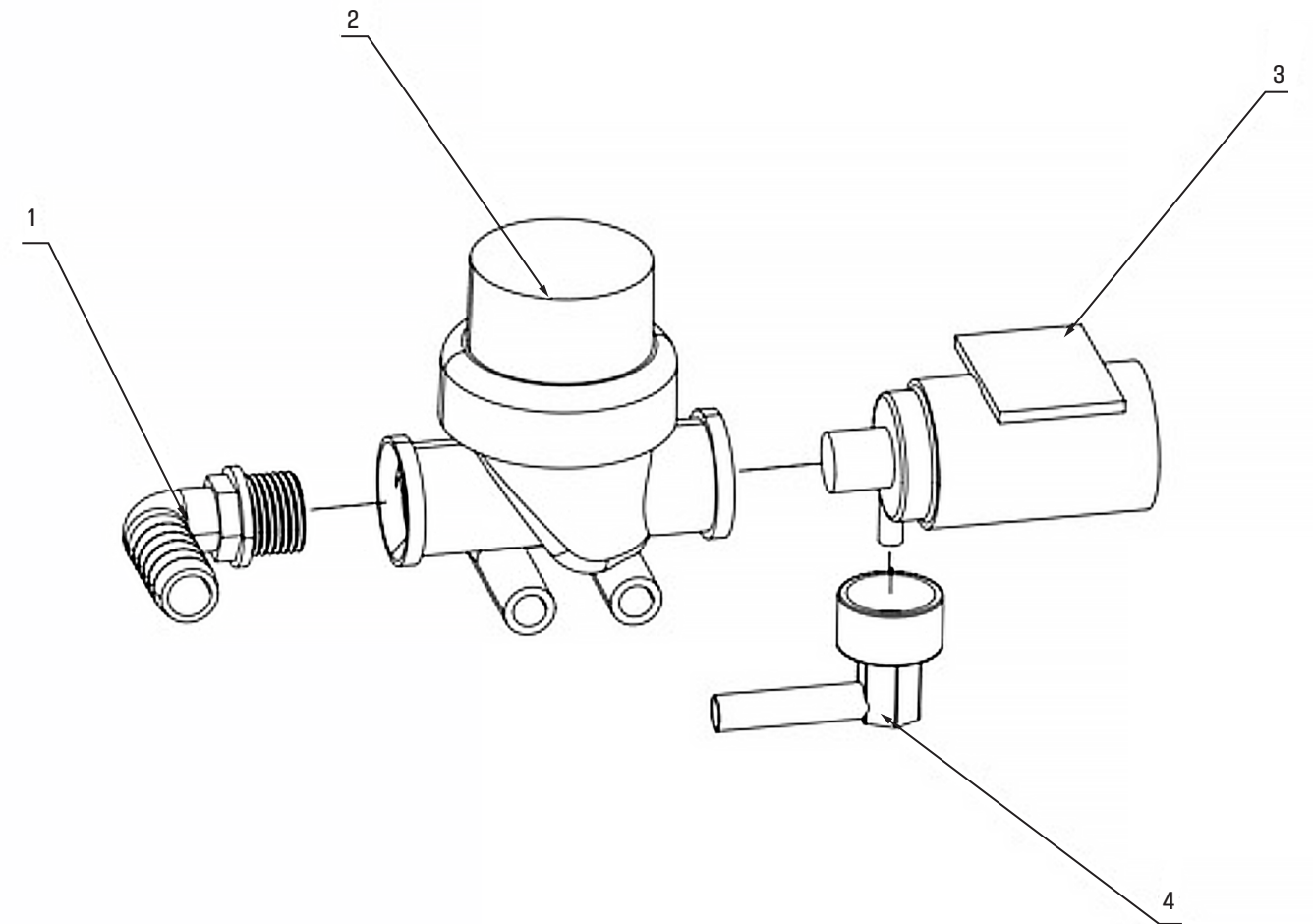
No	Part No.	Description	Qty
1	W12138	Screw M8X50	1
2	W12270	Lifting motor 24V-1	1
3	W12263	Nut M8	1
4	W12141	Lifting arm, squeegee	1
5	W12263	M8 Lock nut	6
6	W12143	Joint58X16, Lifting motor	1
7	W12144	Screw M8X25	1
8	W12301	M8 Washer	7
9	For Reference	M6 lock nut	5
10	W12145	Supporting seat-1, Squeegee lifting frame	1
11	W12146	Chain group	1
12	W12147	Supporting seat-2	1
13	W12149	Lifting frame	1
14	W12150	Sleeve D14D11-41	1
15	W12151	Screw M10X70	1
16	W11076	M8 Washer	2
17	For Reference	Screw M6X40	4
18	W12152	Plastics pipe clip	4
19	For Reference	M6 lock nut	1
20	W11011	Sleeve D8D6-8	1
21	For Reference	Screw M6X30	1
22	W12153	Nut M10	1
23	W12154	Washer D10D20	1
24	W12155	M8x65 Bolt	2
25	W12301	M8 Washer	4
26	W12300	M8 Nylon Washer	4
27	W12144	Screw M8X25	2

BRUSH LIFTING GROUP



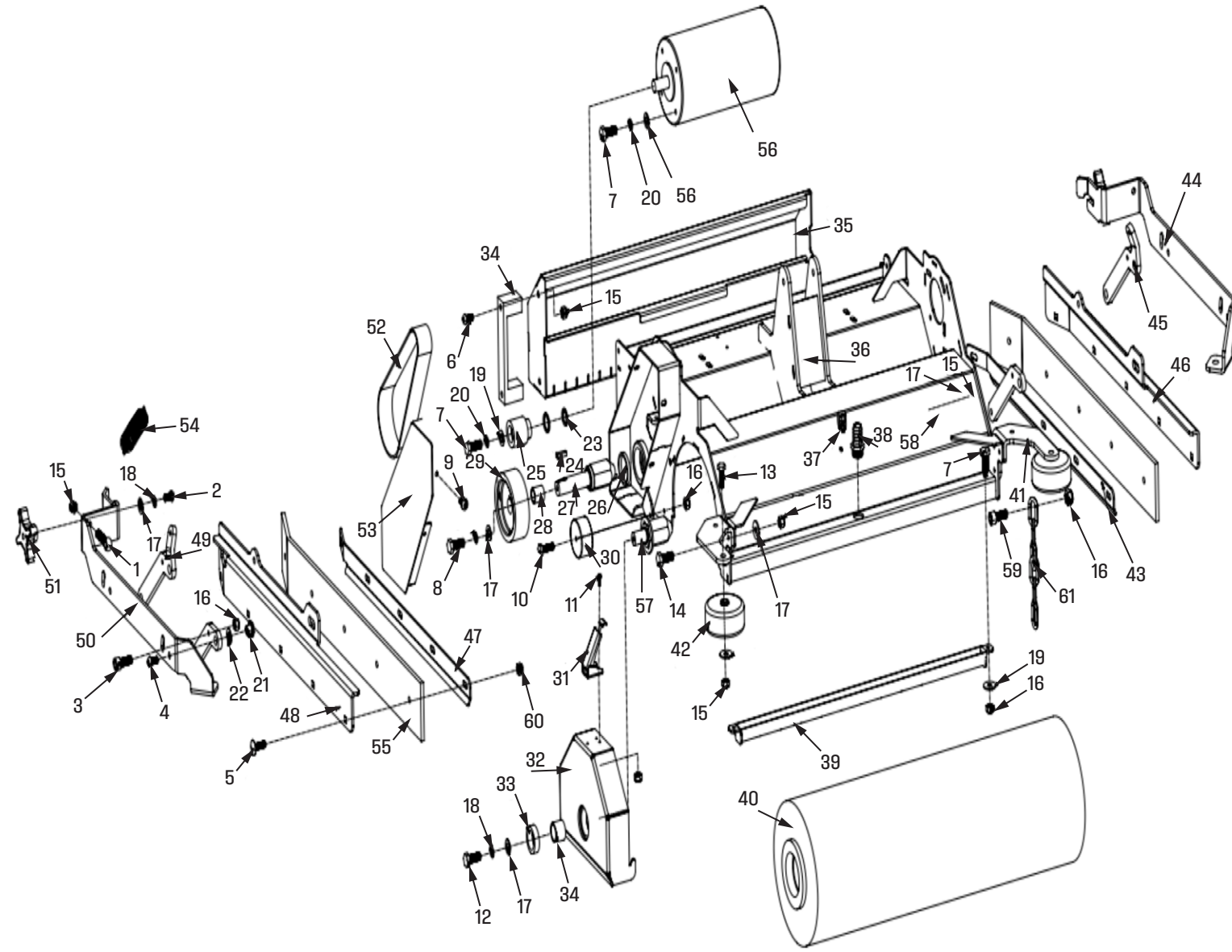
No	Part No.	Description	Qty
1	W12114	Frame-1	1
2	W12115	Frame-2	1
3	W12116	Frame-3	1
4	W12117	Frame-4	1
5	W12011	M8*20 Bolt	2
6	W12263	Nut M8	2
7	For Reference	Screw 10×20	1
8	For Reference	10M Nut and washer	1
9	For Reference	Screw M8×30	2
10	W11082	Copper sleeve	2
11	W12300	M8 Nylon washer	2
12	W12300	M8 Nylon washer	2
13	W12301	M8 Washer	2
14	W12263	M8 Nut	2

FILTER GROUP



No	Part No.	Description	Qty
1	W12156	Plastic Elbow	1
2	W10968	Filter	1
3	W10969	Pump	1
4	W12159	Copper Elbow	1

RX30C CYLINDRICAL GROUP



No	Part No.	Description	Qty
1	For Reference	Fisheye Screw M8*20	2
2	For Reference	Bolt, round head, M8*45	2
3	For Reference	Bolt, round head, M6*16	4
4	For Reference	Button Head Socket Cap Screw M8*15	8
5	For Reference	Carriage Bolts, M8*30	10
6	For Reference	Fisheye Screw M8*20	2
7	W12043	M6*20Bolt, Hex head	12
8	W12011	M8*20Bolt, Hex head	2
9	W13530	Button Head Socket Cap Screw M6*15	8
10	For Reference	Bolt, Hex head M6*40	2
11	For Reference	Round head cross head screw, M4*10	6
12	W12011	M8*20Bolt, Hex head	2
13	For Reference	Bolt, Hex head M8*60	2

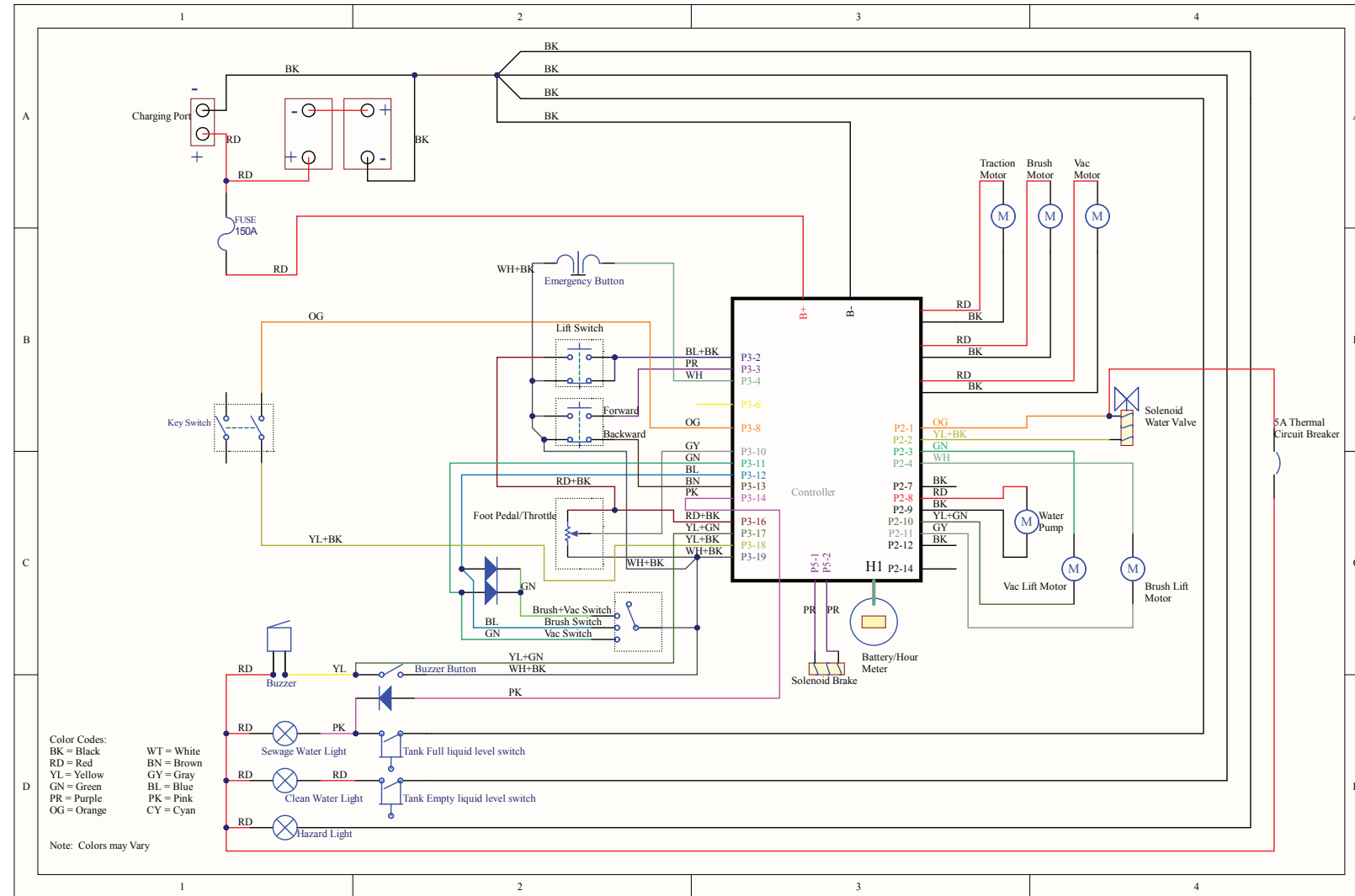
RX30C CYLINDRICAL GROUP

No	Part No.	Description	Qty
14	For Reference	Bolt, Hex head M6*15	6
15	W12263	M8Lock Nut	10
16	For Reference	M6 Lock Nut	14
17	W11076	M8 Washer	10
18	W12010	M8spring washer	6
19	W12292	M6 Washer	14
20	For Reference	M6 spring washer	10
21	For Reference	M8 external hexagonal irregular nut	4
22	W12300	M8 Nylon washer	4
23	For Reference	M16 gasket	4
24	W13409	Top pin key pin	2
25	W12487	Brush disc pulley fixing sleeve	2
26	W12250	Bearing 6004	4
27	W13247	Cylindrical Brush Shaft, DX26C & RX32C	2
28	W13412	21 * 25 * 23mm shaft sleeve	2
29	W13248	Belt pulley drive basin	2
30	W13414	50 * 20 wheels	2
31	W13415	Roll brush buckle	2
32	W13416	Roll brush protective shell-1	2
	W13417	Roll brush protective shell-1 (old)	2
33	W12047	Bearing 6003	4
34	W13418	18*22*5mm shaft sleeve	2
35	W13419	Garbage collection box	1
36	W13420	M20 rolling brush bracket main body	1
	W13421	M20 rolling brush bracket main body (old)	1
37	W11014	Cl i p, Wi re	1
38	W13422	1/2 outer thread 14mm stainless steel single pass	1
39	W13423	M20 Drip bracket	1
	W13424	M20 Drip bracket (old)	1
40	W13244	Dylindrical Brush, RX30 (38")	2
41	W13425	Collision wheel bracket	2
42	W11161	Small Roller Wheel	2
43	W13426	rubber strip pressure strip Left	1
	W13427	rubber strip pressure strip Left (old)	1
44	W13428	Rubber strip bracket-1 Left	1
	W13429	Rubber strip bracket-1 Left (old)	1
45	W13430	Rubber strip bracket-2 Left	1
	W13431	Rubber strip bracket-2 Left (old)	1

RX30C CYLINDRICAL GROUP

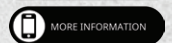
No	Part No.	Description	Qty
46	W13432	Rubber strip bracket-3 Left	1
	W13433	Rubber strip bracket-3 Left (old)	1
47	W13434	rubber strip pressure strip right	1
	W13435	rubber strip pressure strip right (old)	1
48	W13436	Rubber strip bracket-3 right	1
	W13437	Rubber strip bracket-3 right (old)	1
49	W13438	Rubber strip bracket-2 right	1
	W13439	Rubber strip bracket-2 right (old)	1
50	W13440	Rubber strip bracket-1 right	1
	W13441	Rubber strip bracket-1 right (old)	1
51	W10985	Wing Nut Knob, Star	2
52	W13252	Drive Blet, DX26C & RX30C	1
53	W13442	Roll brush protective shell-1	2
54	W13459	Spring 1.8*18.6*22.5T*77.6H	2
55	W13251	Side Squeegee Blade, DX26C & RX30C	2
56	W13443	Rolling brush disc motor	2
57	W13411	Rolling brush short top pin	2
58	W13413	Lifting connecting arm	2
59	W13444	M20 water pipe assembly (old)	1
60	W13445	Aircraft turning handle	10
61	W13446	Five Sections, Width 15, Height 24, Diameter 4mm Chain	2
62	W13458	Bolt, round head,M6*40	2

WIRING DIAGRAM



ONYX
TECHNOLOGY POWERING A CLEANER FUTURE

12605 Commerce Station Dr • Suite 700
Huntersville, NC 28078
704.827.9368



onyxsolutions.com