

ONYX

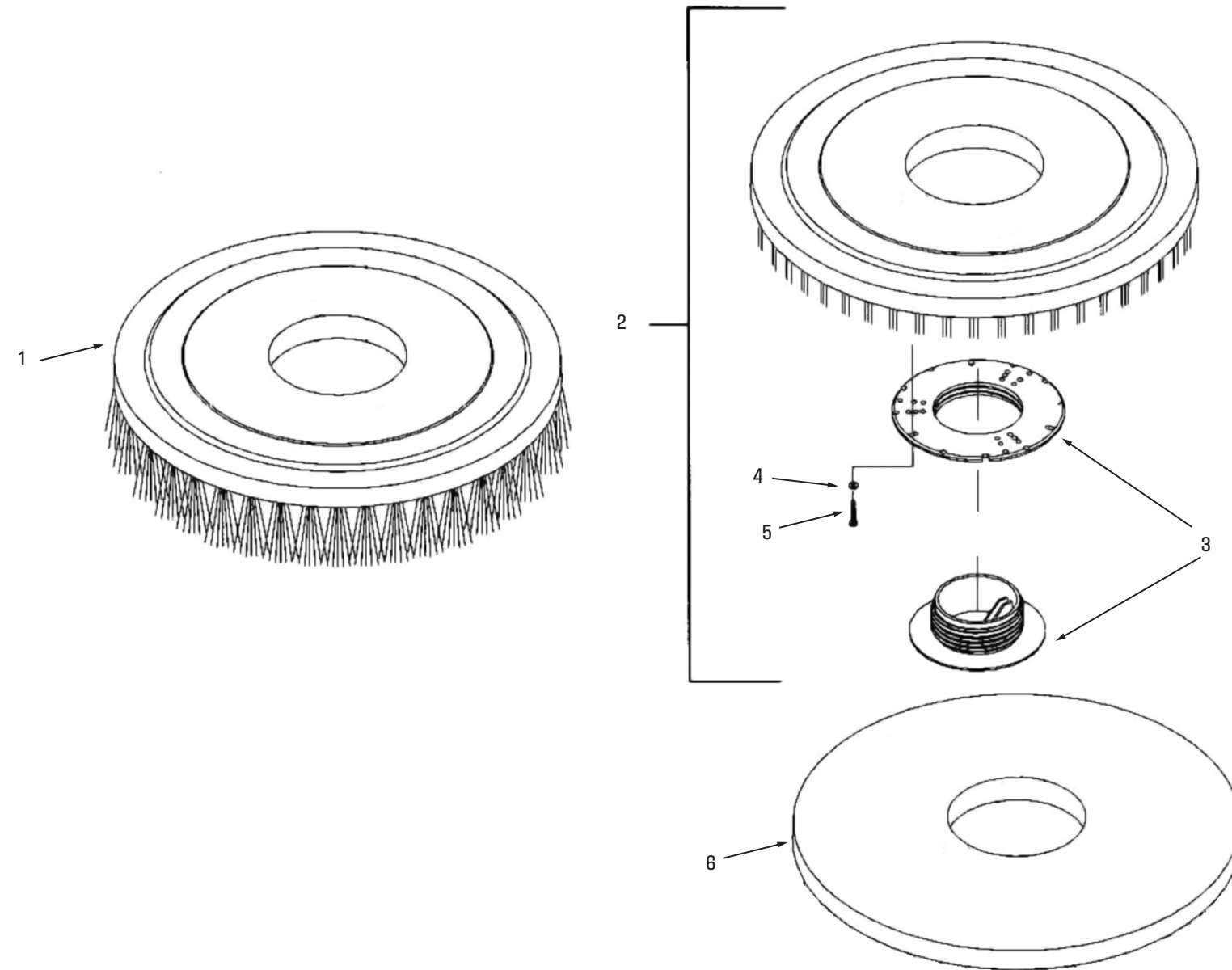
TECHNOLOGY POWERING A CLEANER FUTURE



RX20
RIDE-ON FLOOR SCRUBBER

ILLUSTRATED PARTS LIST

Brush and cleaning pad set	3
Recovery Tank Group	4-5
Solution Tank Group	6-7
Head Group	8-9
Control Panel Group	10
Battery Group	11
Base Group	12
Drain Group	13
Front Wheel Group	14-15
Brush Lifting Group	16-17
Rear Wheel Group	18-19
Brush Assembly Group	20-21
Squeegee Lifting Group	22-23
Squeegee Group	24-25
Wiring Diagram	26
Notes	27



How to order spare parts:

Parts and supplies may be ordered by phone, by fax or by email.

- A. Identify the machine model
- B. Identify the machine serial number
- C. Provide the part number and quantity

Provide your detail logistic information

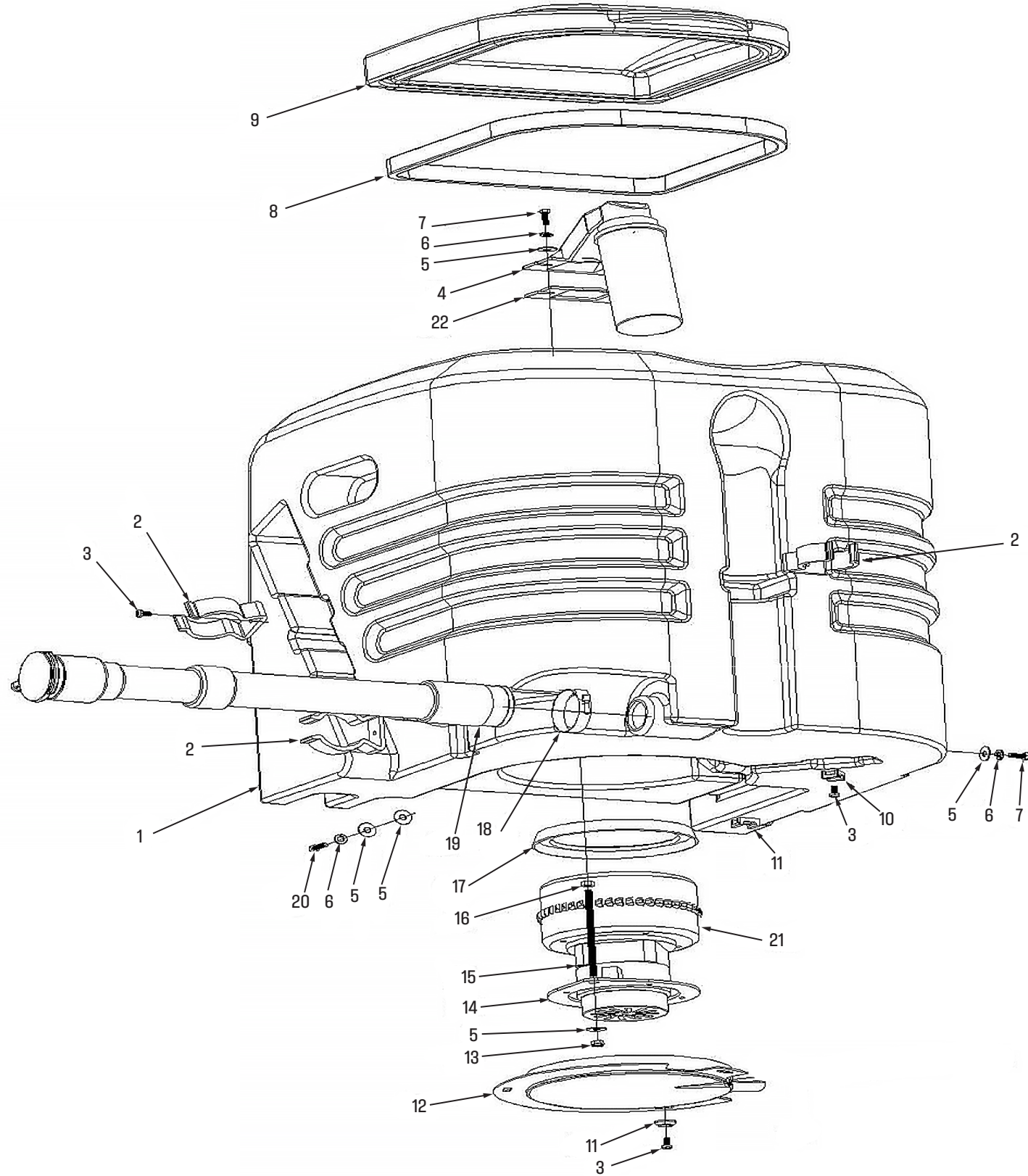
Provide your name, company name, shipping address, phone number and purchase order number.

No	Part No.	Description	Qty
1	W10846	Brush 20" - Standard Stiffness	1
	W10887	Brush 20" - Extra Stiff	1
2	W10847	Pad drive assy-1	1
3	W10848	Device, centering-1	1
4	For Reference	Washer D4D9	3
5	For Reference	Screw M4X15	3
6	W11017	Pad, polishing, white-1 Light	1
6	W11018	Pad, scrubbing, red-1 Medium	1
6	W11019	Pad, stripping, black-1 Heavy	1



12605 Commerce Station Dr • Suite 700
 Huntersville, NC 28078
 704.827.9368

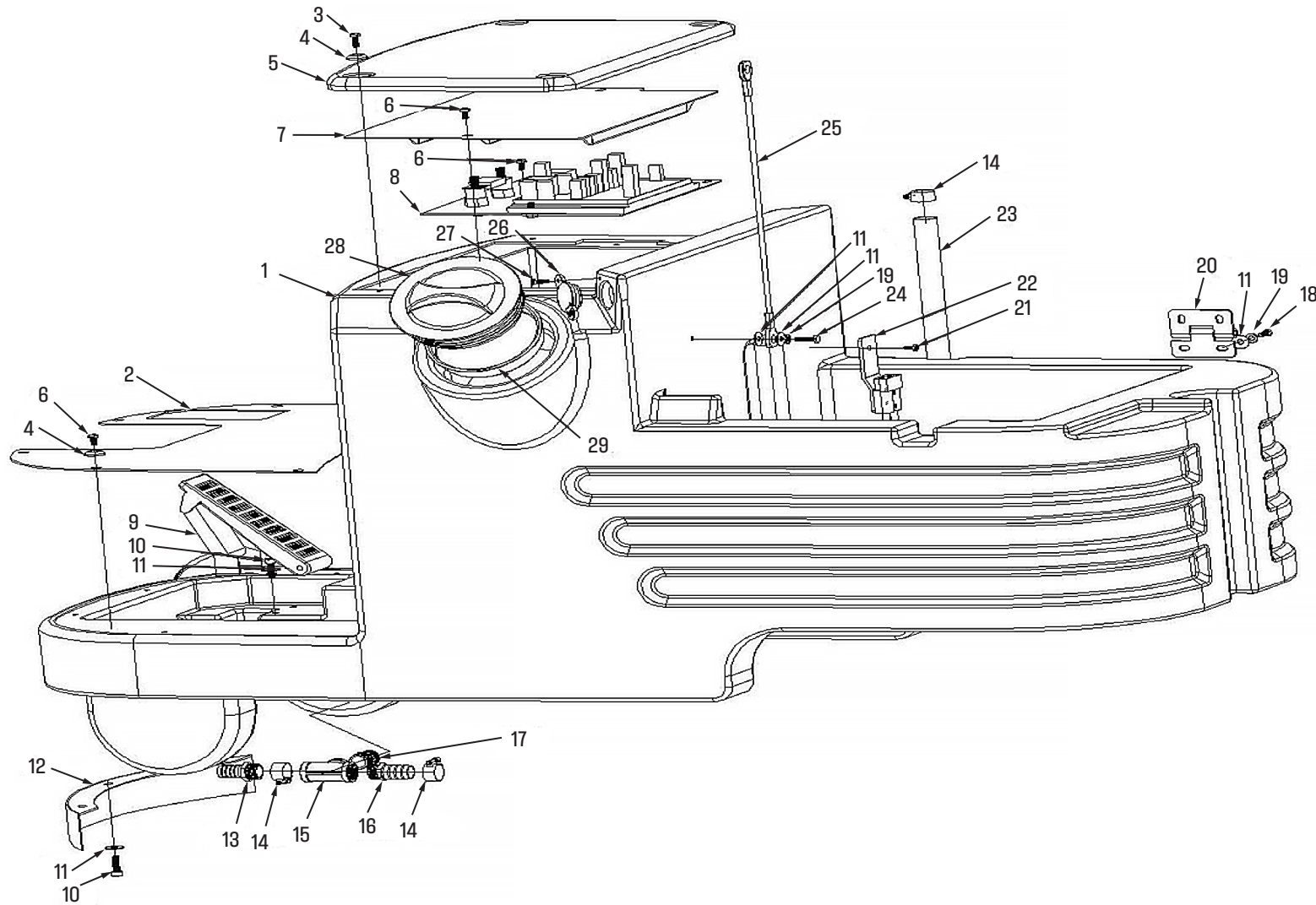
RECOVERY TANK GROUP



RECOVERY TANK GROUP

No	Part No.	Description	Qty
1	W12170	Recovery Tank	1
2	W10839	Pipe Clip-1	3
3	For Reference	Screw M5X10	8
4	W11006	Float Ball Assy-1	1
5	For Reference	WasherD6xD18	10
6	For Reference	Spring washer D6	7
7	For Reference	Screw M5 15	6
8	W10825	Seal, Recovery tank cover	1
9	W12174	Recovery Tank Lid	1
10	W12176	Fixing Bracket,	2
11	For Reference	WasherD5-D20-5	3
12	W12177	Acoustic box	1
	W13166	OnBoard Charger (optional upgrade - replaces W12177 Acoustic Box)	1
13	For Reference	Nut M6	3
14	W12178	Bracket, vacuum motor	1
15	For Reference	Screw M6X110	1
16	For Reference	Nut M6	1
17	W12179	Seal, vacuum motor	1
18	W12180	Clip D40-D64	1
19	W12181	Drainage Pipe D38-1000	1
20	For Reference	Screw M6x20	1
21	W12182	Vacuum motor24V-1	1
22	W11011	Seal, Float Assy-1	1

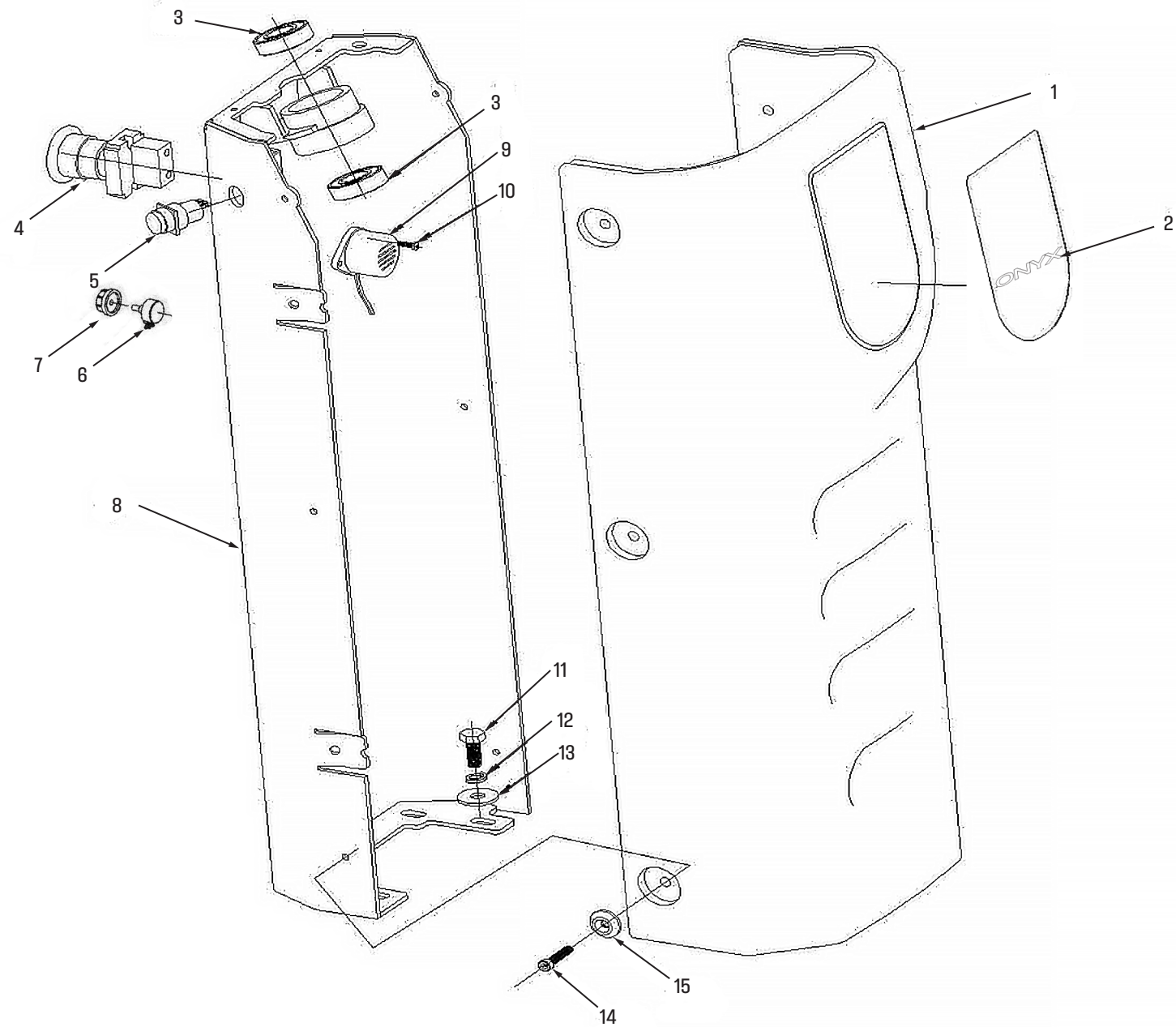
SOLUTION TANK GROUP



SOLUTION TANK GROUP

No	Part No.	Description	Qty
1	W12184	Solution Tank	1
2	W12185	Floor Plate	1
3	For Reference	Screw M5X10	4
4	For Reference	Washer D5-D20-5	10
5	W12186	Seat Cushion	1
6	For Reference	Screw M5X15	9
7	W12187	Circuit Board Cover Plate	1
8	W12188	Circuit Board	1
9	W12189	Accelerator Pedal	1
10	For Reference	Screw M6x20	5
11	For Reference	Washer D6xD18	11
12	W12190	Bumper, front	1
13	W12191	G1/2-D16 Joint	1
14	W12192	Clip D16-D25	2
15	W12193	G1/2 Tee Joint	1
16	W12194	G1/2-D19 Joint	1
17	W12171	Screw G1/2-G1/2	1
18	For Reference	Screw M5 15	4
19	For Reference	Spring Washer D6	5
20	W12195	Hinge-66-38	2
21	For Reference	Screw M4X10	1
22	W12196	Socket -1	1
23	W12197	Pipe for water level D23-D19-760	1
24	For Reference	Screw M5x20	1
25	W12198	Cable, solution Tank	1
26	W11034	Cap, solution Tank	1
27	For Reference	Screw M4x15	1
28	W10877	Large cap, solution Tank	1
29	W10830	Filter, fresh water D112	1

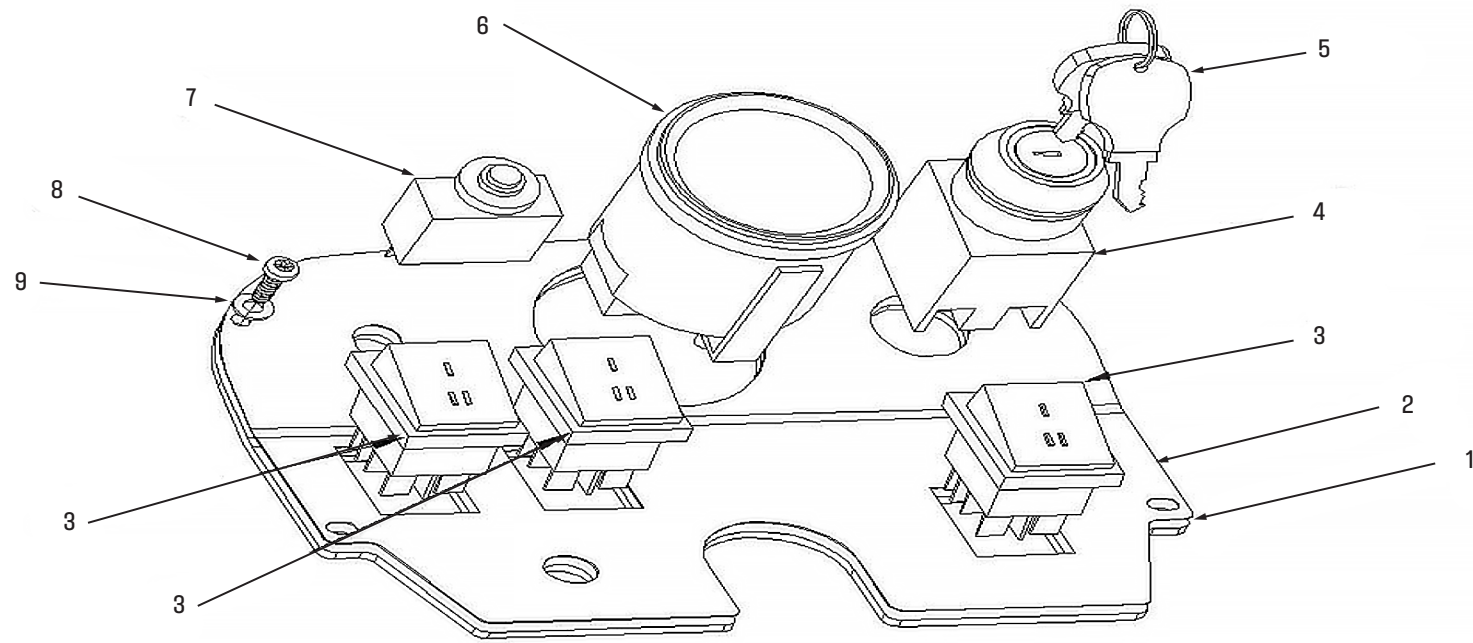
HEAD GROUP



HEAD GROUP

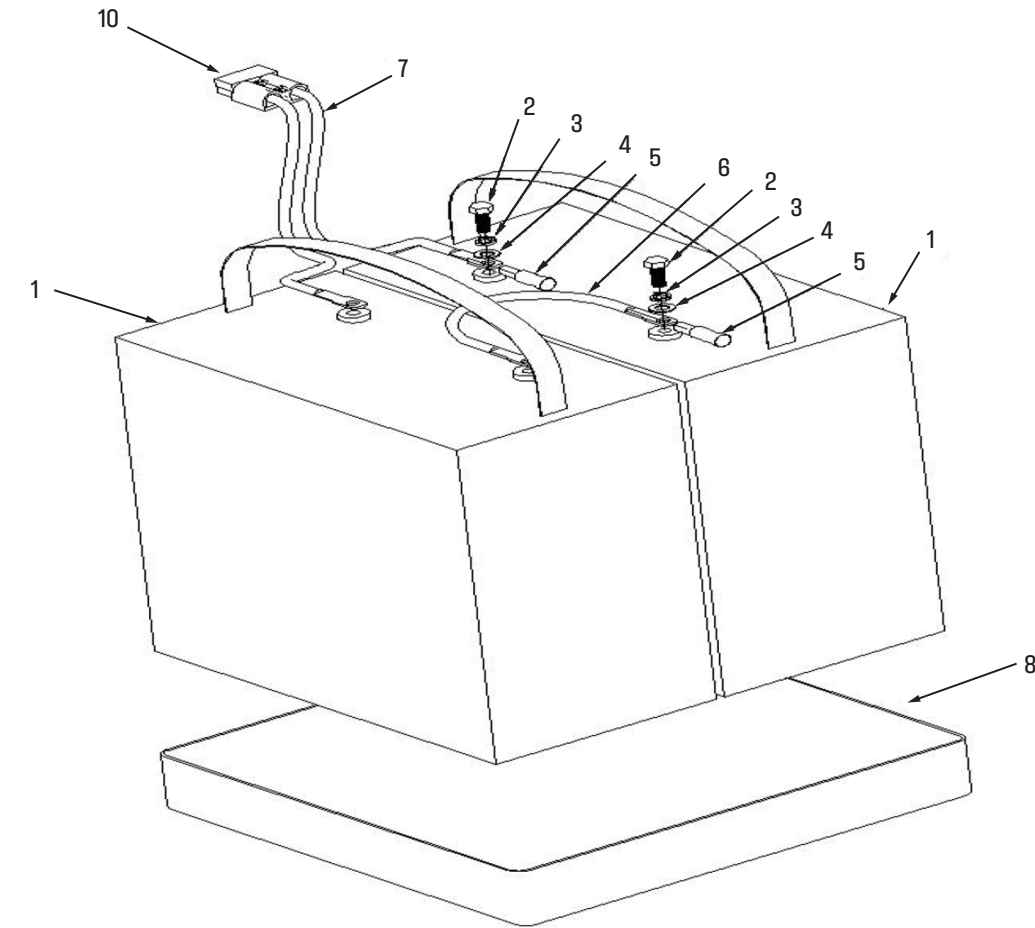
No	Part No.	Description	Qty
1	W12202	Front Plastic Panel	1
2	W12203	RX20 Front ONYX Logo	1
3	W12204	Bearing 6003-D35D17-10	2
4	W12205	Button for Emergency stop	1
5	W12325	Alarming Button	1
6	W12323	Speed Control	1
7	W12324	Thumb Turn Knob	1
8	W12208	Dash Board Support Plate	1
9	W12209	Buzzer-1	1
10	For Reference	ScrewM5X10	2
11	For Reference	ScrewM8x20	4
12	For Reference	Spring Washer D10	4
13	For Reference	Washer D8xD24	4
14	W12210	Screw M5x25	6
15	W12211	Washer D5-D20-5	6

CONTROL PANEL



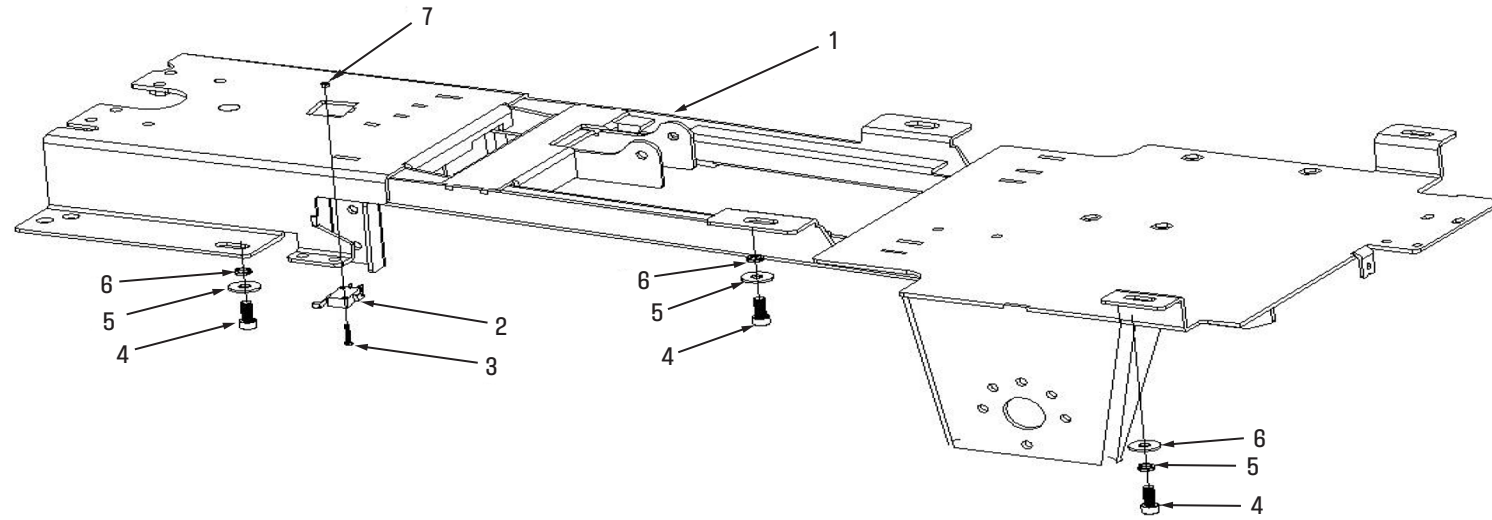
No	Part No.	Description	Qty
1	W12212	Panel	1
2	W12213	Panel Label	1
3	W10840	Toggle Switch	3
4	W10817	Lock with Key	1
5	W10853	Key	1
6	W12217	Electricity Meter-1	1
7	W10816-5A	Thermal Protection Button	1
8	For Reference	Screw M4x15	4
9	For Reference	Washer D4xD9	4

BATTERY GROUP



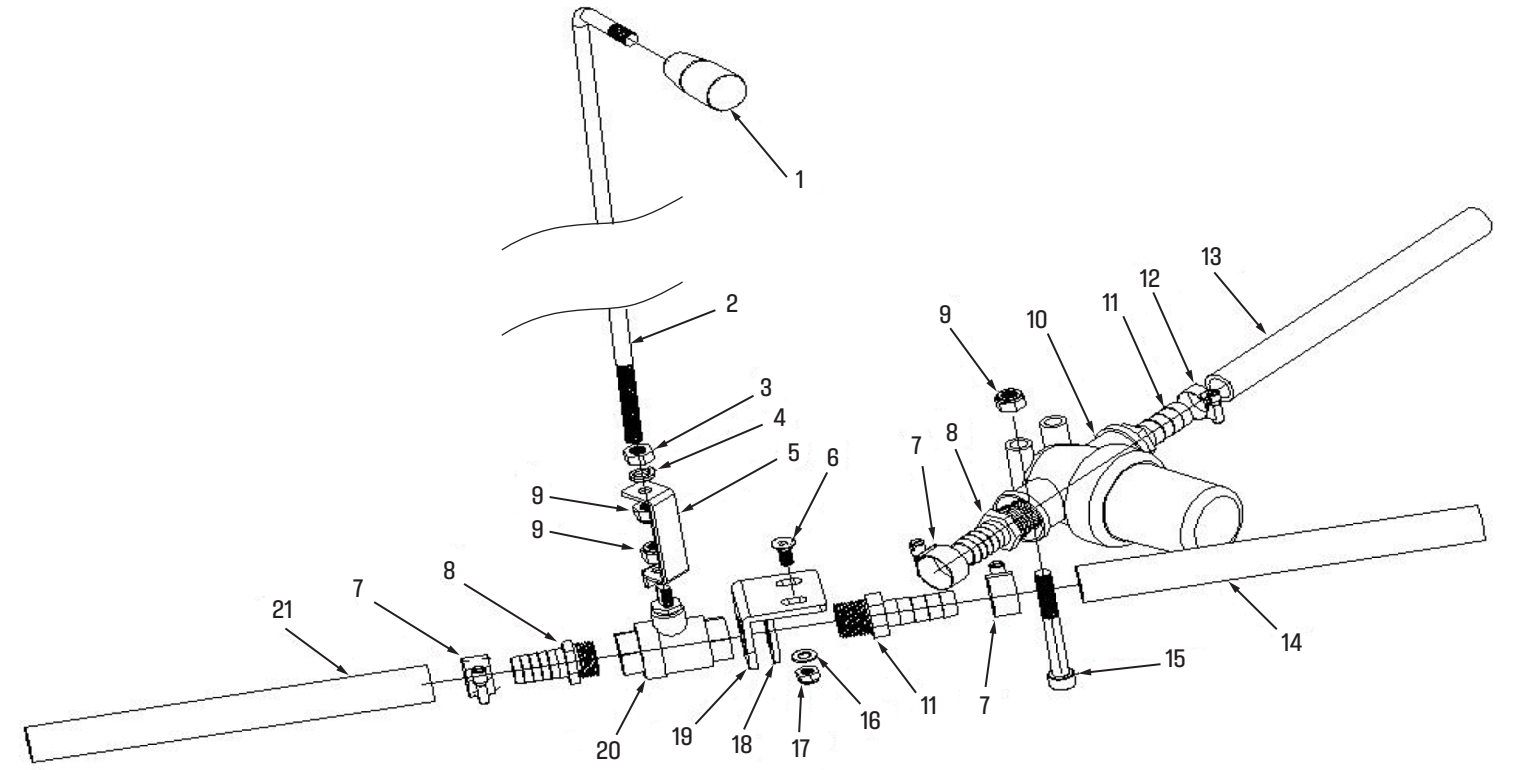
No	Part No.	Description	Qty
1	W10890	12V Battery	2
2	For Reference	Screw M8x20	4
3	For Reference	Spring Washer D8	4
4	For Reference	Washer D8xD16	4
5	W11146	Rubber Cap	4
6	W11145	Battery Connector Cable	1
7	W12223	Battery to Machine Cable	1
8	W11144	Battery Tray	1
9	W10884	Battery Charger - 24V/15A	1
10	W10858	Charger Socket Housing, Small	1

BASE GROUP



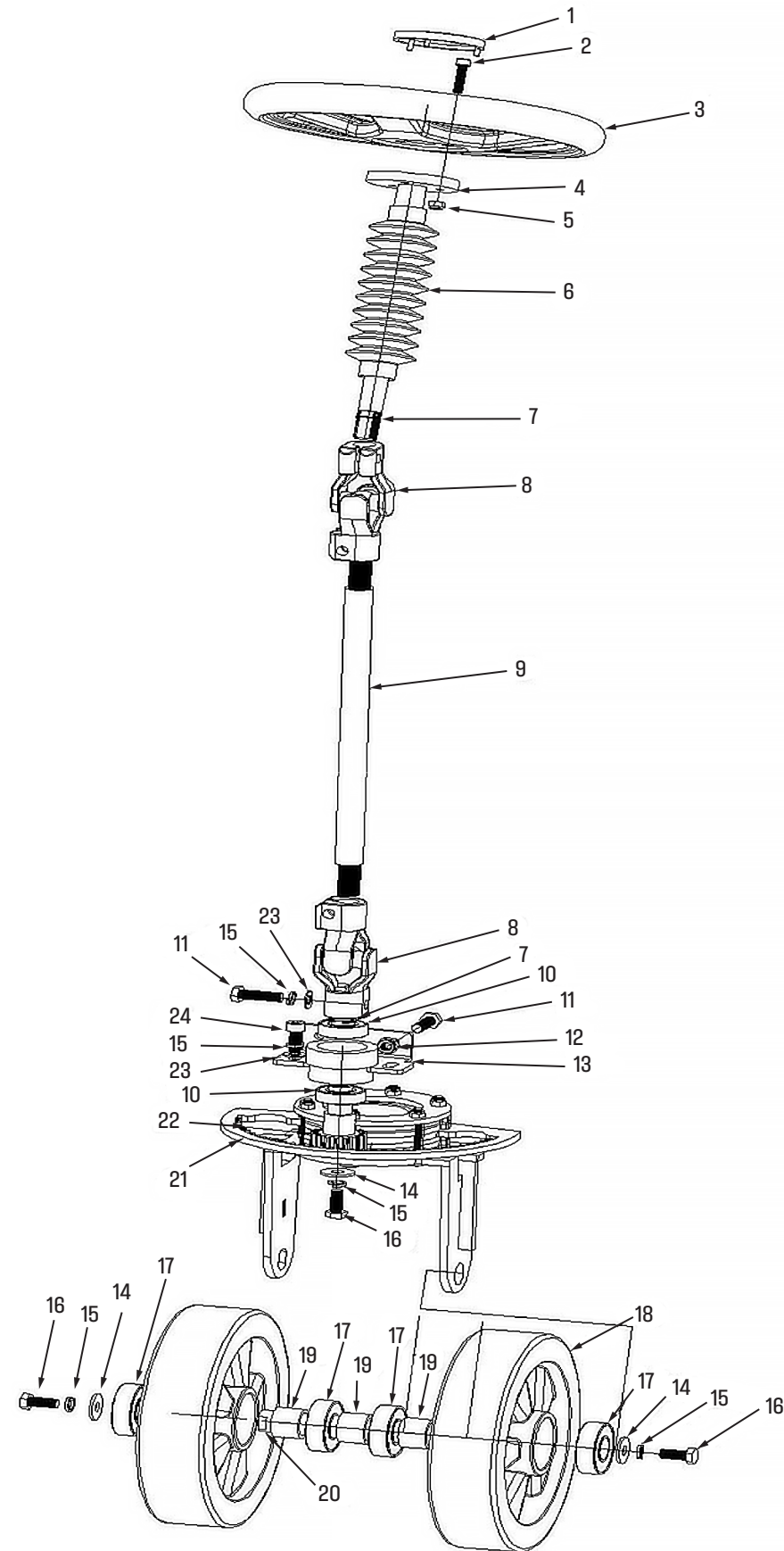
No	Part No.	Description	Qty
1	W12225	Frame	1
2	W12226	Switch	1
3	For Reference	Screw M3x20	2
4	For Reference	Screw M8x20	6
5	For Reference	Spring Washer D8	6
6	For Reference	Washer D8 D24	6
7	For Reference	Nut M3	2

DRAIN GROUP



No	Part No.	Description	Qty
1	W12227	Handle, Drainage-01	1
2	W12228	Rod, Drainage	1
3	For Reference	Nut M8	1
4	For Reference	Spring washer D8	1
5	W12229	Bracket	1
6	For Reference	Screw M6x10	2
7	W12230	Clip D16-D25	3
8	W12231	Straight Barb, 1/2 NPT x 14mm Barb	2
9	W12232	Nut M8	3
10	W10968	G1/2 Filter, Fresh water	1
11	W12231	Straight Barb, 1/2 NPT x 14mm Barb	2
12	W12235	Clip D13-D19	1
13	W10984-12	13mm Hose, 12" long	1
14	W10984-8	13mm Hose, 8" long	1
15	W12238	Screw M8X70	1
16	For Reference	Nut D6xD12	2
17	For Reference	Screw M6	2
18	For Reference	Washer D20xD37	1
19	W12239	Bracket	1
20	W12240	G1/2 Water Valve	1
21	W10984-12	13mm Hose, 12" long	1

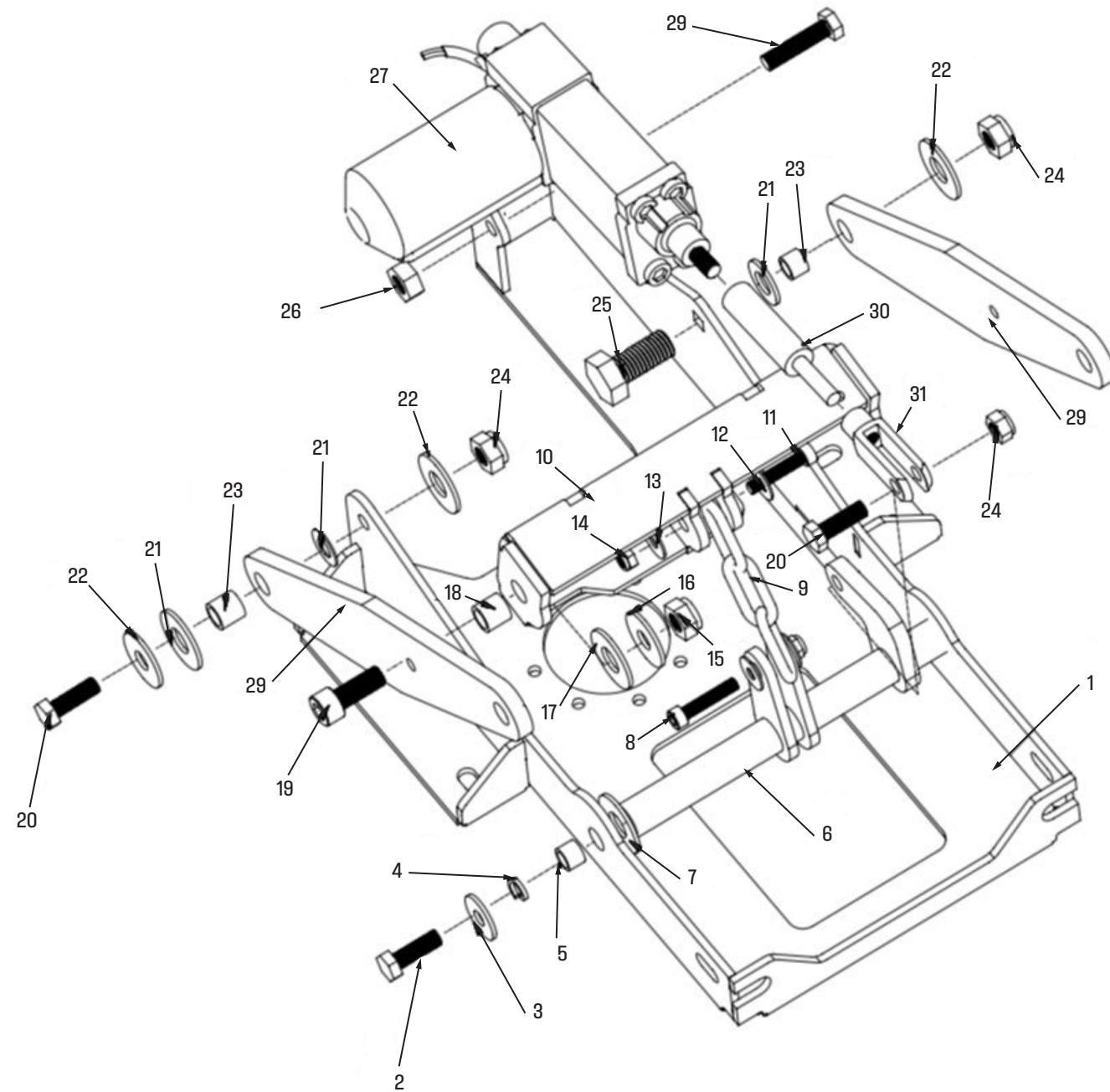
FRONT WHEEL GROUP



FRONT WHEEL GROUP

No	Part No.	Description	Qty
1	W12242	Cover, Steering wheel	1
2	For Reference	Screw M6X25	3
3	W12243	Steering wheel	2
4	W12244	Main Shaft, steering wheel	1
5	For Reference	Nut M6	3
6	W12245	Protective Bush-1	1
7	For Reference	Spring D14	2
8	W12246	Universal Joint-1	2
9	W12247	Vertical Axis, steering wheel	1
10	W12248	Bearing6003-D35D17-10	2
11	For Reference	Screw M8X30	4
12	For Reference	Nut M8	2
13	W12249	Bracket, gear	1
14	For Reference	WasherD8D24	3
15	For Reference	Spring Washer D8	5
16	For Reference	Screw M8X20	3
17	W12250	Shaft 6204-D47D20-14	4
18	W10855	Front Wheel	2
19	W12252	Shaft Sleeve D27D21-20	3
20	W12253	Main Axel, front wheel	1
21	W12254	Gear Plate Group	1
22	W12255	Gear Group	1
23	For Reference	Washer D8D16	2
24	For Reference	Screw M8X20	2

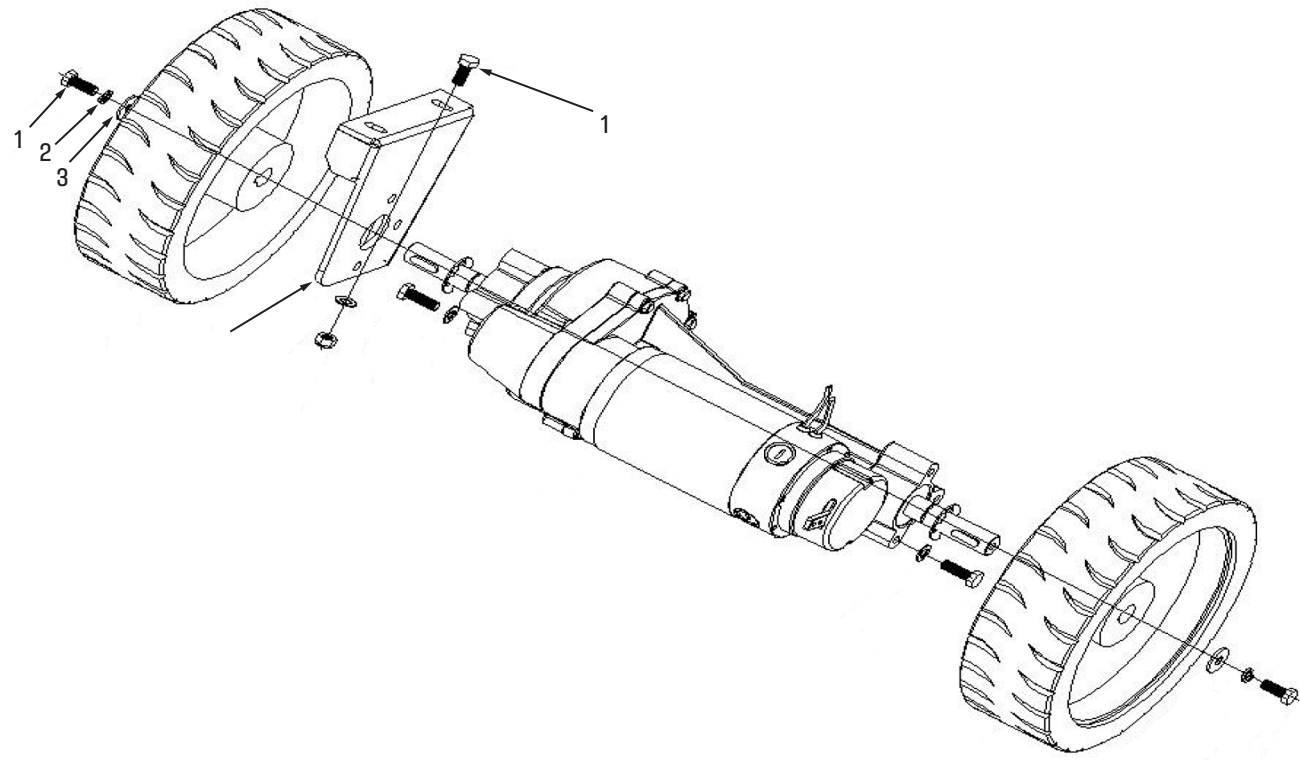
BRUSH LIFTING GROUP



BRUSH LIFTING GROUP

No	Part No.	Description	Qty
1	W12275	A5 Base Frame	1
2	For Reference	Hex Bolt M8 x 30	2
3	For Reference	M8 Large Washer	2
4	For Reference	M8 Spring Washer	2
5	W12273	M8 Brush Sleeve	2
6	W12272	Lifting Bracket - 2	1
7	W12265	Nylon Washer	1
8	W12268	M8 x 25 Bolt	2
9	W13139	Chain	1
10	W12267	Lifting Bracket - 3	1
11	For Reference	M8 x 30 Bolt	1
12	For Reference	M8 Washer	2
13	For Reference	M8 Washer	2
14	For Reference	M8 Lock Nut	2
15	For Reference	M8 Lock Nut	2
16	For Reference	M8 Large Washer	2
17	For Reference	Nylon Washer	2
18	For Reference	M8 Brass Sleeve	2
19	For Reference	M8 x 25 Bolt	2
20	For Reference	M8 x 30 Hex Bolt	1
21	For Reference	Nylon Washer	3
22	For Reference	M8 Large Washer	3
23	For Reference	M8 Brass Sleeve	2
24	W12263	M8 Lock Nut	2
25	For Reference	M8 x 30 Bolt	1
26	W12263	M8 Lock Nut	1
27	W12270	A5 Lifting Motor	1
28	For Reference	M8 x 55 Bolt	1
29	W12261	Lifting Bracket - 1	2
30	W13135	Rod with Thread	1
31	W13134	Connection part	1

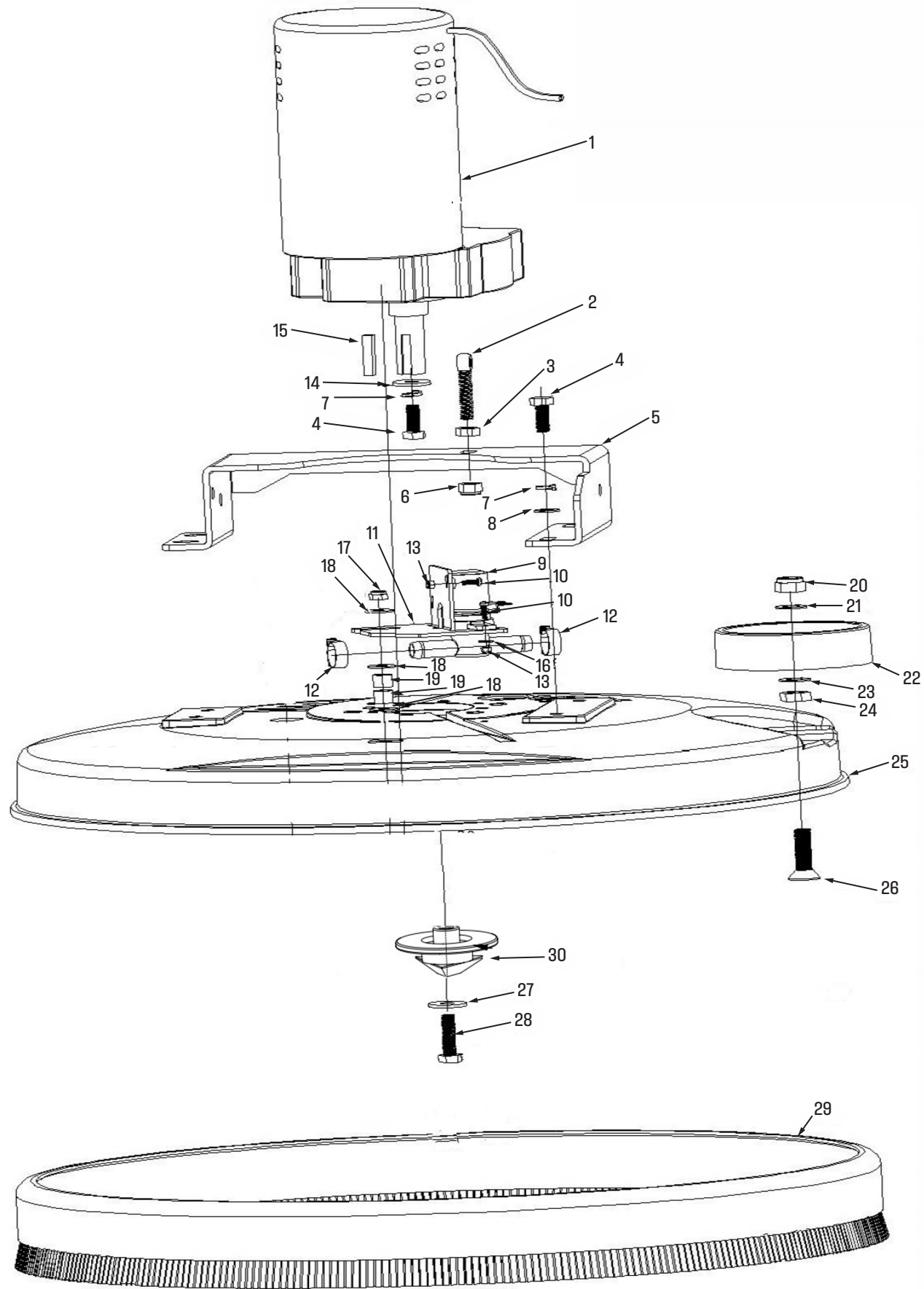
REAR WHEEL GROUP



REAR WHEEL GROUP

No	Part No.	Description	Qty
1	For Reference	Screw M8X20	2
2	For Reference	Spring Washer D8	2
3	For Reference	Washer D8D24	2
4	W10841	Rear Wheel	2
5	For Reference	Screw M8X25	2
6	For Reference	Washer D8D16	4
7	W10973	Drive Motor Group 24V-1	2
8	For Reference	Nut M8	2
9	W12259	Fixing Plate, Drive Motor	1
10	W11344	Electric Brake	1

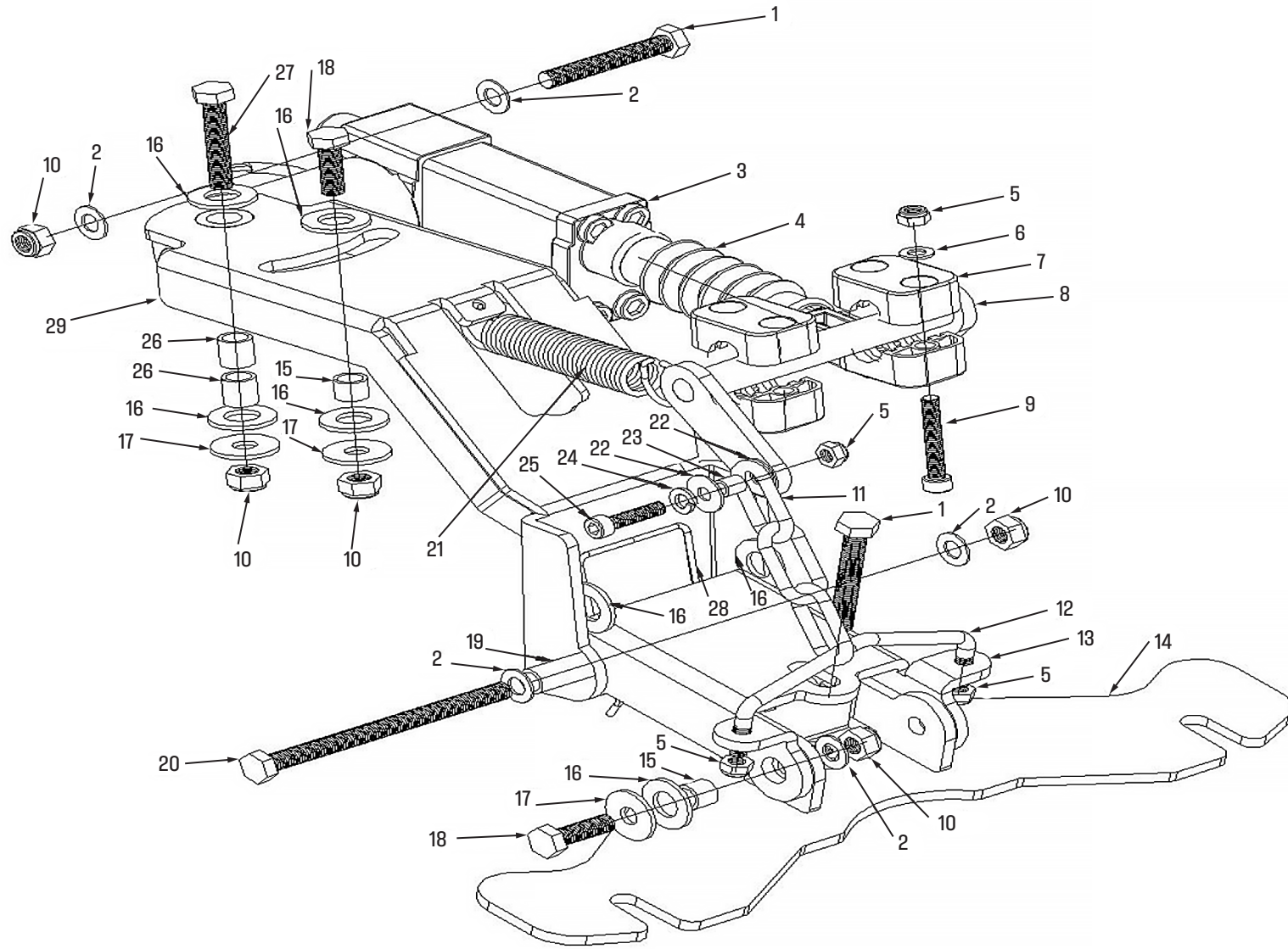
BRUSH ASSEMBLY GROUP



BRUSH ASSEMBLY GROUP

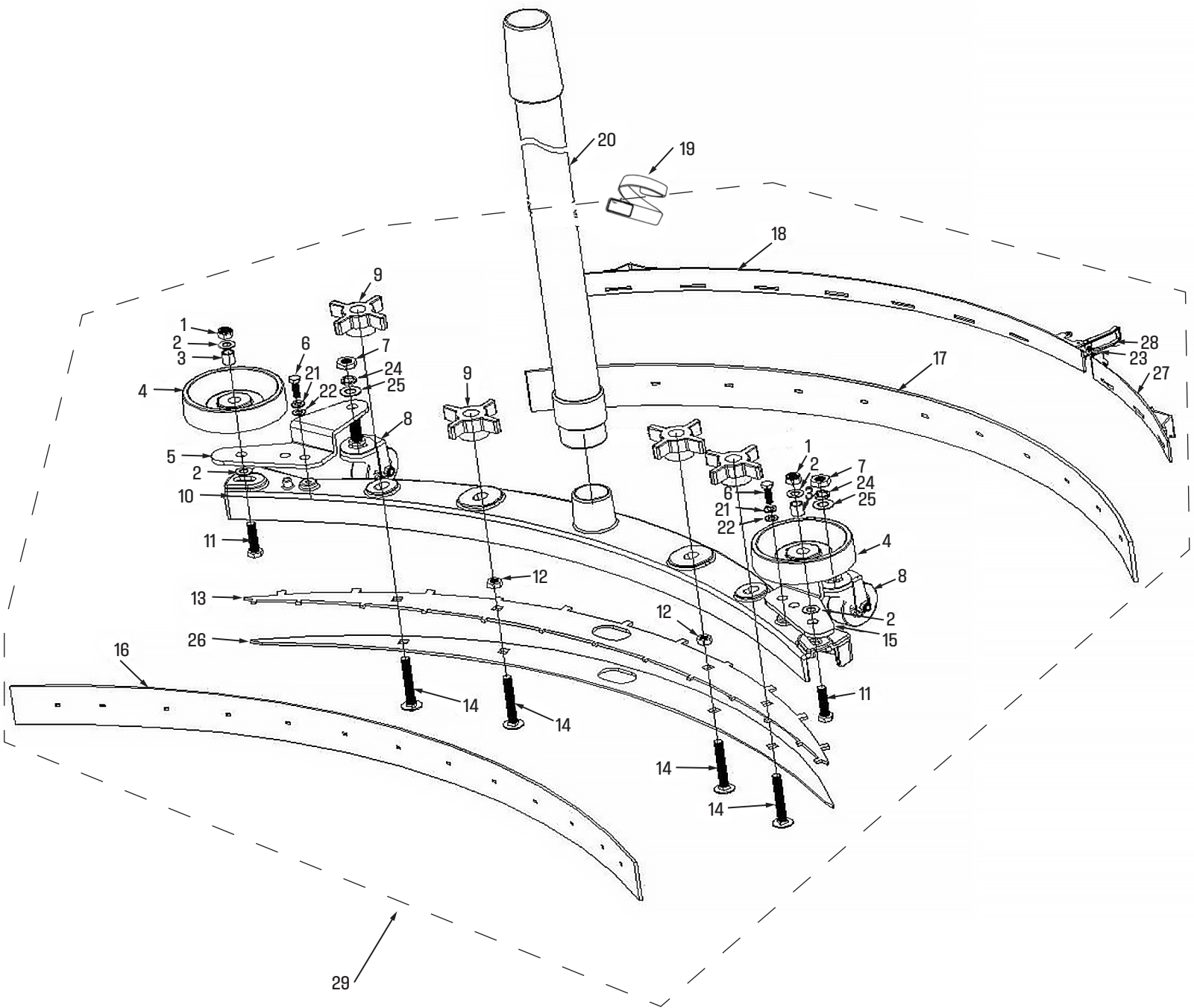
No	Part No.	Description	Qty
1	W11093	Brush Motor, 24V	1
2	For Reference	Screw M8X30	1
3	For Reference	Nut M8	1
4	For Reference	Screw M8X20	5
5	W12275	Bracket, Brush	1
6	For Reference	Nut M8	7
7	For Reference	Spring Washer D8	4
8	For Reference	Washer D8D16	4
9	W10808-B	Water Solenoid	1
10	For Reference	Screw M3X10	4
11	W12277	Bracket, Electric Valve	1
12	W12278	Clip D13-D19	3
13	For Reference	Nut M3	4
14	For Reference	WasherD8D24	7
15	W12279	Flat Key 6-6-30	1
16	For Reference	Washer D4D9	2
17	For Reference	Nut M6	1
18	For Reference	Washer D6D18	1
19	For Reference	Sleeve D12D9-13	8
20	For Reference	Nut M10	1
21	For Reference	Washer D10D20	1
22	W10845	Bumper wheel-1	1
23	For Reference	Washer D10D20	1
24	For Reference	Nut M10	1
25	W12285	Brush cover	1
26	For Reference	Screw M10X30	1
27	For Reference	WasherD8D24	1
28	For Reference	Screw M8X30	1
29	W10868	Skirt, Brush-1	1
30	W10813	Flange, brush	1
31	W10818-B	Water Solenoid	1

SQUEEGEE LIFTING GROUP



SQUEEGEE LIFTING GROUP

No	Part No.	Description	Qty
1	W12289	Screw M8X20	2
2	For Reference	Washer D8D16	6
3	W12270	Lifting Motor Group 24V-2	1
4	W12291	Sleeve, Lifting Motor-1	1
5	For Reference	Nut M6	7
6	W12292	Washer D6D12	4
7	W12293	Clip, Green plastic pipe	4
8	W12294	Lifting Arm, Squeegie	1
9	For Reference	Screw M8X20	4
10	W12295	Nut M8	6
11	W12296	Chain, Assy	1
12	W12297	U type Rod, Squeegie	1
13	W12298	Bracket-2, Lifting, Squeegie	1
14	W12299	Bracket-3, Lifting, Squeegie	1
15	For Reference	Sleeve D12D9-9	3
16	W12300	Washer D12D24	8
17	W12301	Washer D8D24	4
18	W12302	Screw M8X25	2
19	For Reference	Sleeve D12D9-80	1
20	W12303	Screw M8X110	1
21	For Reference	Spring D19D2.5-75	1
22	For Reference	Washer D6D18	2
23	For Reference	Sleeve D8D6-8	1
24	For Reference	Spring Washer D6	1
25	For Reference	Screw M6X25	1
26	For Reference	Sleeve D12D9-13	2
27	W12304	Screw M8X45	1
28	For Reference	Spring-1	1
29	W12305	Bracket-1 Lifting, Squeegie	1



No	Part No.	Description	Qty
1	For Reference	Nut M8	2
2	For Reference	Washer D8D16	4
3	For Reference	Sleeve D12D9-13	2
4	W10845	Bumper Wheel-1	2
5	W11138	Bracket, right wheel, squeegee	1
6	For Reference	Screw M6X20	2
7	For Reference	Nut M10	2
8	W10870	Wheel, Squeegee Assy-1	2
9	W11139	Star Knob-1	4
10	W11140	Frame, Squeegee Assy	1
11	For Reference	Screw M8x35	2
12	For Reference	Nut M8	2
13	W12311	Fixing Plate, Blade-1	1
14	W12312	Screw M8x60	4
15	W11143	Bracket, right wheel, squeegee	1
16	W10863	Front Blade-01 Squeegee Assy	1
17	W10864	Rear Blade-01 Squeegee Assy	1
18	W11143	Fixing part, Assy, Rear Blad	1
19	W10866	Velcro Clinch Strap, 1- 12in	1
20	W12318	Hose D38-1300, Sewage water	1
21	For Reference	Spring Washer D6	2
22	For Reference	Washer D6D12	2
23	For Reference	Nut M5	1
24	For Reference	Spring Washer D10	2
25	For Reference	Washer D10D20	2
26	W12319	Fixing Plate-2 Blade	1
27	W12320	Fixing Part, rear blade, Left	1
28	For Reference	Screw M5x50	1
29	W10889	Squeegee Assembly 31"	1

ONYX
TECHNOLOGY POWERING A CLEANER FUTURE

12605 Commerce Station Dr • Suite 700
Huntersville, NC 28078
704.827.9368



ONYX STORE

onyxsolutions.com