

ONYX®



DX15

BATTERY FLOOR SCRUBBER

ILLUSTRATED PARTS LIST

IMPORTANT

Please confirm your specific model of DX15, based on serial number and images below:



Serial Number Starts with "AH"
Parts Starts on **Page 3**

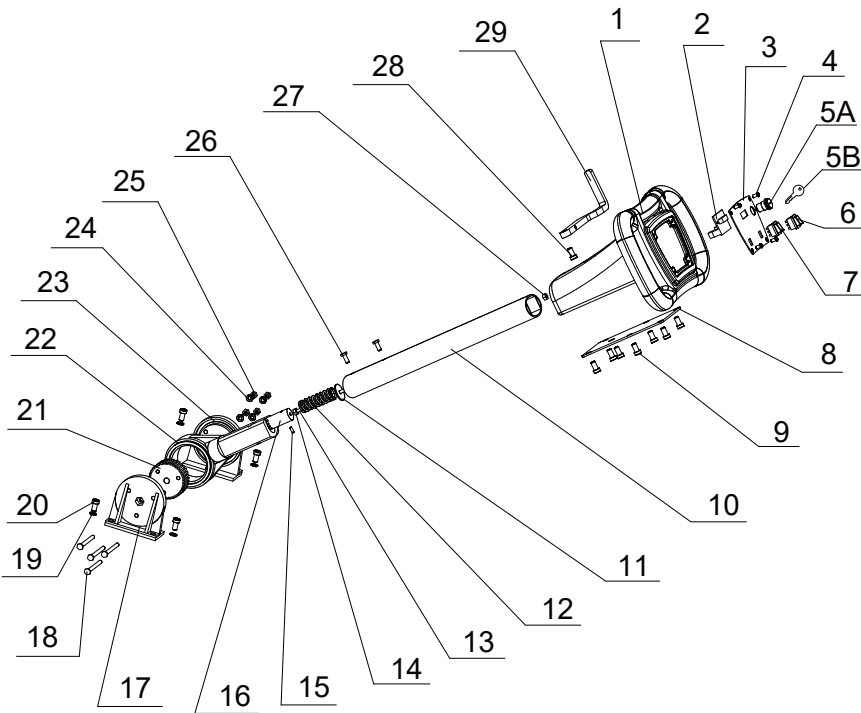


Serial Number Starts with "SH"
Parts Starts on **Page 6**

ONYX®

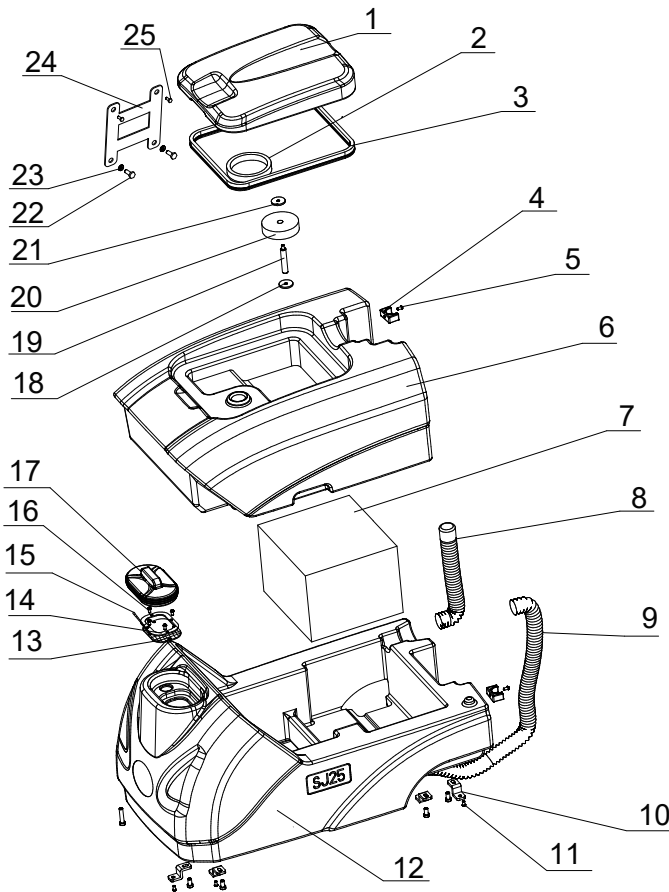
12605 Commerce Station Dr • Suite 700
Huntersville, NC 28078
704.827.9368
OnyxSolutions.com

Handle Group



- 1 W14091 | Plastic Handle
- 2 W14209 | Meter - Battery & Hour
- 3 W14160 | Control Panel
- 4 W14205 | Screw, M8*4, 304 Stainless
- 5A W14190 | Key Switch, includes 2 Keys
- 5B W14104 | Extra Machine Key
- 6 W14162 | Rocker Switch
- 7 W14162 | Rocker Switch
- 8 W14133 | Fixed Plate
- 9 W14115 | Screw, M6*16, Hex Head
- 10 W14134 | Aluminum Tube
- 11 W14124 | Washer (6*30*3)
- 12 W14202 | Tension Spring
- 13 W14116 | Pull Rod
- 14 W14201 | Nut, M5, 304 Stainless
- 15 W14208 | Positioning Pin
- 16 W14170 | Top Gear
- 17 W14123 | Left Mounting Bracket
- 18 W14181 | Screw, M6*70, Galvanized
- 19 W14098 | Washer, M8, Galvanized
- 20 W14094 | Screw, M8*16, Socket Head
- 21 W14111 | Turning Gear
- 22 W14210 | Pivoting Lower Handle Body
- 23 W14193 | Right Mounting Bracket
- 24 W14177 | Washer, M6*13, Galvanized
- 25 W14154 | Nut, M6, Galvanized
- 26 W14196 | Screw, M6*10, Galvanized
- 27 W14188 | Nut, M5, Galvanized
- 28 W14122 | Screw, M8*25, 304 Stainless
- 29 W14144 | Lever, Handle Adjustment

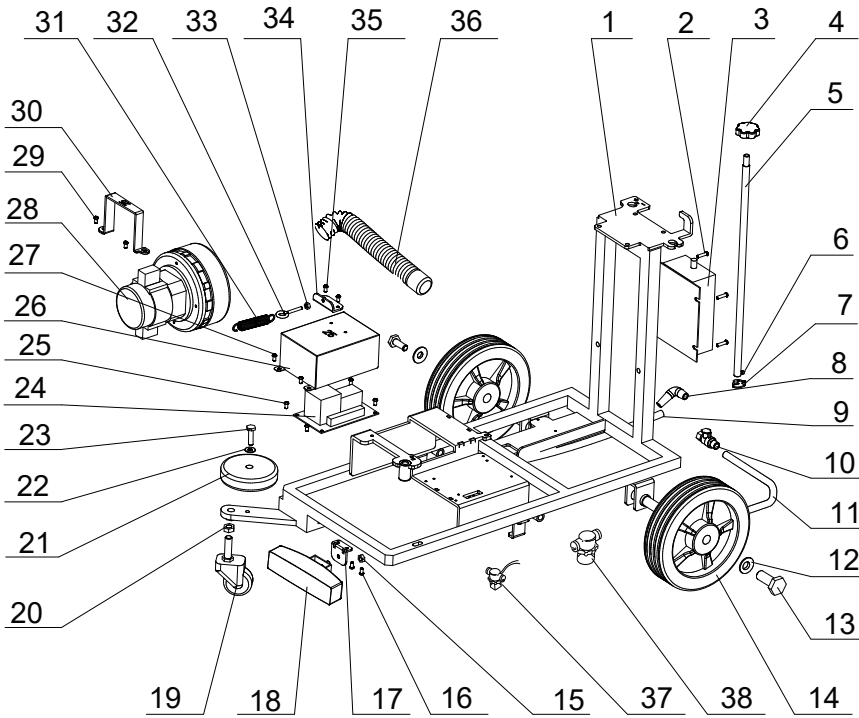
Water Tank Group



- 1 W14114 | Lid, Recovery Tank
- 2 W14090 | O-Ring, Recovery Tank Lid
- 3 W14185 | Gasket Seal, Recovery Tank Lid
- 4 W14199 | Hose Mount
- 5 W14125 | Screw, M5*10, Galvanized
- 6 W14103 | Recovery Tank
- 7 QX24V50 | Battery, Lithium LFP, 24V, 50AH
- 8 W14126 | Drain Hose
- 9 W14102 | Suction Hose
- 10 W14105 | Mounting Bracket, Solution Tank
- 11 W14110 | Screw, M6*35, 304 Stainless
- 12 W14118 | Solution Tank
- 13 W14109 | Inlet Filet, Solution Tank
- 14 W14186 | Mounting Ring, Inlet Filter
- 15 W14135 | Chain
- 16 W14167 | Screw, M4*12, 304 Stainless
- 17 W14147 | Cover, Solution Tank Inlet
- 18 W14211 | Washer, M8*24, 304 Stainless
- 19 W14194 | Nylon Rod
- 20 W14206 | Float Pad
- 21 W14119 | Washer, M14*35, 304 Stainless
- 22 W14222 | Screw, M5*12, 304, Lrg Button
- 23 W14223 | Washer, M6*18, 304 Stainless
- 24 W14216 | Rubber Strap, Recovery Lid
- 25 W14217 | Screw

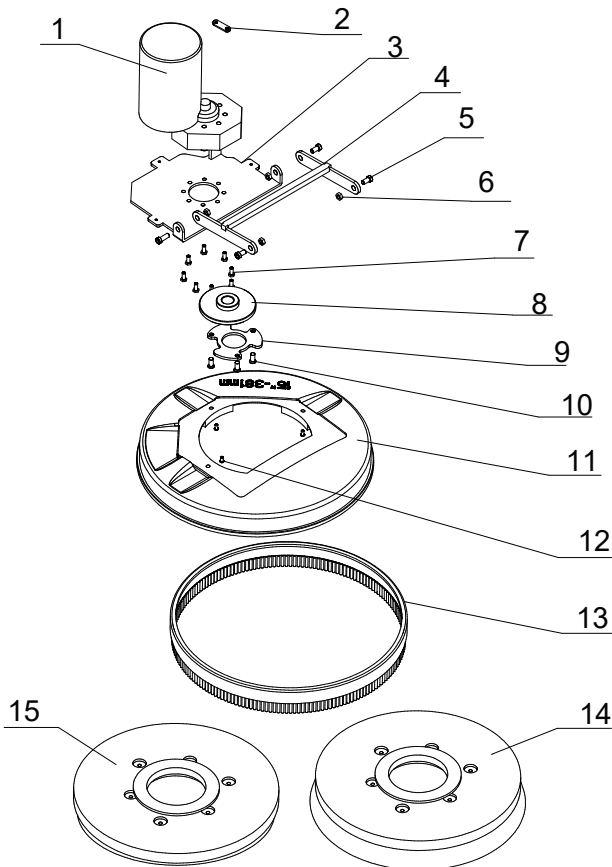
IMPORTANT Parts on this page support Serial Numbers starting with "AH"

Frame Group



- 1 W14172 | Main Frame
- 2 W14136 | Screw, M4*16, 304 Stainless
- 3 QXC24V15L | Charger, 24V 15A, Lithium
- 4 W14163 | Wingnut, M10, Plastic+Copper
- 5 W14150 | Valve Stem, Long
- 6 W14117 | Screw, M4*6, Galvanized
- 7 W14197 | Water Volume Adjustment
- 8 W14152 | Elbow
- 9 W14151 | Water Pipe
- 10 W14149 | Ball Valve
- 11 W14156 | Water Pipe
- 12 W14211 | Washer, M8*24, 304 Stainless
- 13 W14195 | Screw, M8*16, 304 Stainless
- 14 W14166 | Wheel, 8in
- 15 W14161 | Nut, M8
- 16 W14183 | Screw, M8
- 17 W14137 | Bracket
- 18 W14143 | LED Headlight
- 19 W14155 | Swivel Caster, Single Stem
- 20 W14142 | Nut, M10, Galvanized
- 21 W14168 | Bumper Wheel
- 22 W14120 | Washer, M8*16, 304 Stainless
- 23 W14203 | Screw, M8*40, 304 Stainless
- 24 W14138 | Circuit Board, Main
- 25 W14136 | Screw, M4*16, 304 Stainless
- 26 W14121 | Cover, Circuit Board
- 27 W14205 | Screw, M8*4, 304 Stainless
- 28 W14213 | Vacuum Motor
- 29 W14115 | Screw, M6*16, Hex Head
- 30 W14146 | Clamp, Vacuum Motor
- 31 W14131 | Spring, Brush Plate Adjust.
- 32 W14159 | Screw, M6*55, 304 Stainless
- 33 W14096 | Nut, M6, 304 Stainless
- 34 W14132 | Bracket, Adjustment Spring
- 35 W14205 | Screw, M8*4, 304 Stainless
- 36 W14100 | Hose, Vacuum Motor
- 37 W14214 | Solenoid Water Valve
- 38 W14215 | Water Filter

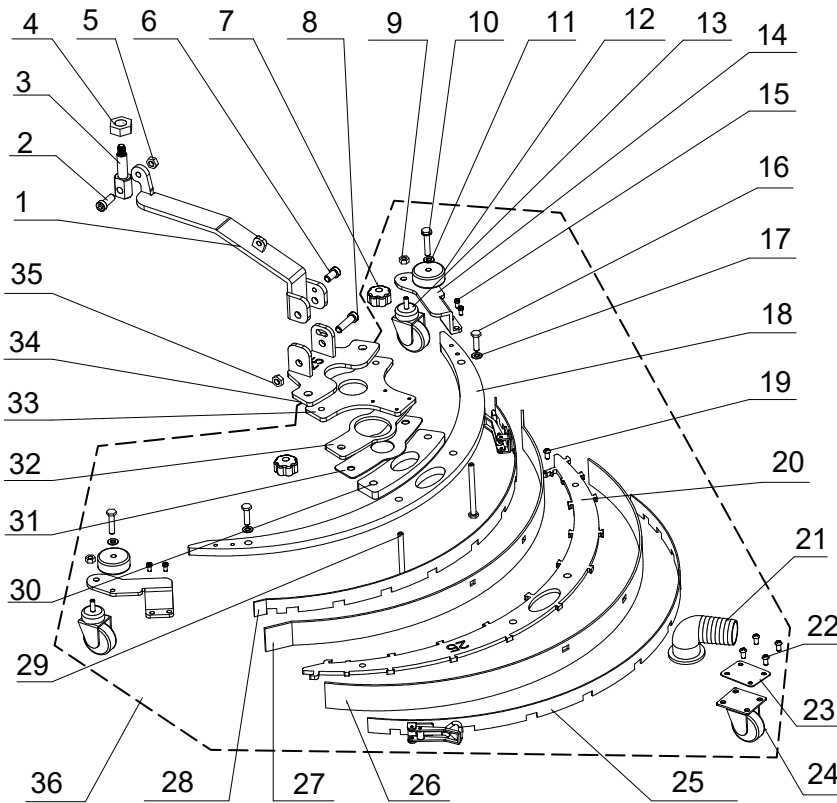
Brush Head Group



- 1 W14198 | Brush Motor
- 2 W14212 | Tension Spring Connector
- 3 W14178 | Mounting Bracket, Brush Motor
- 4 W14101 | Connecting Bracket, Brush Motor
- 5 W14130 | Pin, 10mm
- 6 W14153 | Cotter Pin
- 7 W14115 | Screw, M6*16, Hex Head
- 8 W14173 | Round Drive Plate
- 9 W14187 | Three Flange Drive Plate
- 10 W14174 | Screw, M8*25, Galvanized
- 11 W14189 | Brush Cover
- 12 W14180 | Screw, M5*16, 304 Stainless
- 13 W14097 | Skirt, 15 in
- 14 W14139 | Brush, 15 in, 3-Tab Flange
- 15 W14099 | Pad Driver, 15 inch, 3-Tab Flange

IMPORTANT Parts on this page support Serial Numbers starting with "AH"

Squeegee Group



- | | | |
|----|--------|---------------------------------|
| 1 | W14129 | Squeegee Attachment Brckt Arm |
| 2 | W14204 | Screw, M8*35, 304 Stainless |
| 3 | W14108 | Squeegee Rotation Shaft |
| 4 | W14176 | Nut, M8, 304 Stainless |
| 5 | W14176 | Nut, M8, 304 Stainless |
| 6 | W14141 | Screw, M6*20, 304 Stainless |
| 7 | W14107 | Wingnut, M8, Plastic+Copper |
| 8 | W14204 | Screw, M8*35, 304 Stainless |
| 9 | W14145 | Nut, M8, Galvanized |
| 10 | W14192 | Screw, M6*30, 304 Stainless |
| 11 | W14179 | Washer, M6, 304 Stainless |
| 12 | W14184 | Bumper Wheel |
| 13 | W14127 | Swivel Caster, Single Stem |
| 14 | W14175 | Bracket, Squeegee Swivel Caster |
| 15 | W14148 | Screw, M5*12, 304 Stainless |
| 16 | W14195 | Screw, M8*16, 304 Stainless |
| 17 | W14120 | Washer, M8*16, 304 Stainless |
| 18 | W14140 | Upper Squeegee Body |
| 19 | W14093 | Screw, M5*35, 304 Stainless |
| 20 | W14106 | Lower Squeegee Body |
| 21 | W14200 | Elbow, Suction Hose |
| 22 | W14169 | Screw, M4*10, 304 Stainless |
| 23 | W14171 | Squeegee Adjustment Tab |
| 24 | W14207 | Caster |
| 25 | W14092 | Clamp, Rear Squeegee |
| 26 | W14112 | Squeegee Blade, Rear, 23 in |
| 27 | W14165 | Squeegee Blade, Front, 23 in |
| 28 | W14157 | Clamp, Front Squeegee |
| 29 | W14089 | Screw, M8*45, 304 Stainless |
| 30 | W14128 | Squeegee Suction Gasket Plate-1 |
| 31 | W14191 | Squeegee Suction Gasket Plate-2 |
| 32 | W14113 | Squeegee Suction Gasket Plate-3 |
| 33 | W14158 | Bracket, Squeegee Rear Caster |
| 34 | W14182 | Squeegee Mounting Bracket |
| 35 | W14176 | Nut, M8, 304 Stainless |
| 36 | W14224 | Squeegee Complete Assy, 23 in |

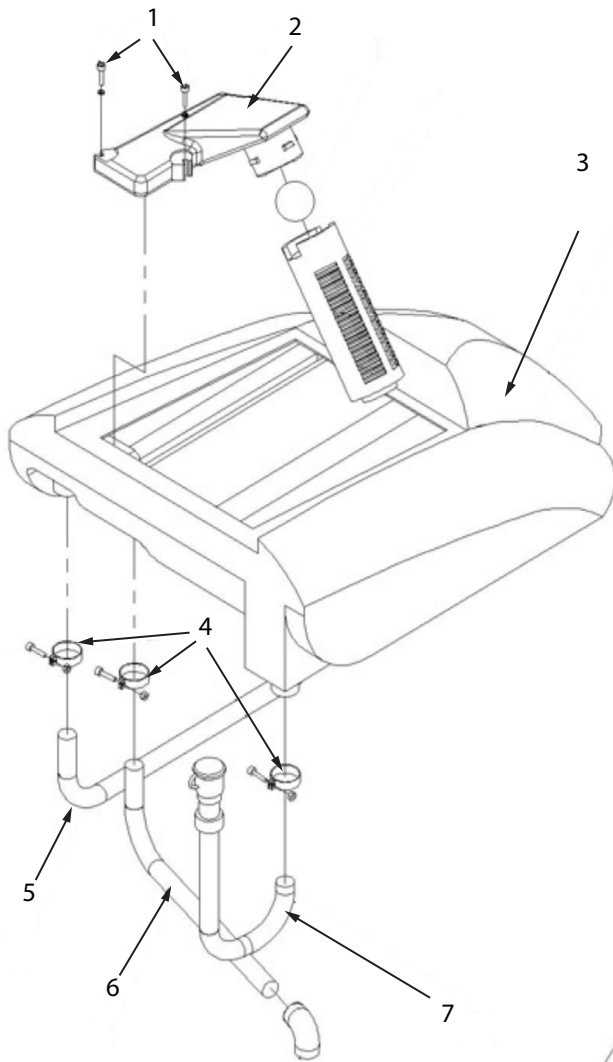
Wire Harnesses



- | | | |
|---|--------|------------------------------|
| 1 | W14218 | Wire harness, Control Panel |
| 2 | W14219 | Wire Harness, Solenoid Valve |
| 3 | W14220 | Wire Harness, Headlight |
| 4 | W14221 | Wire Harness, Main Power |

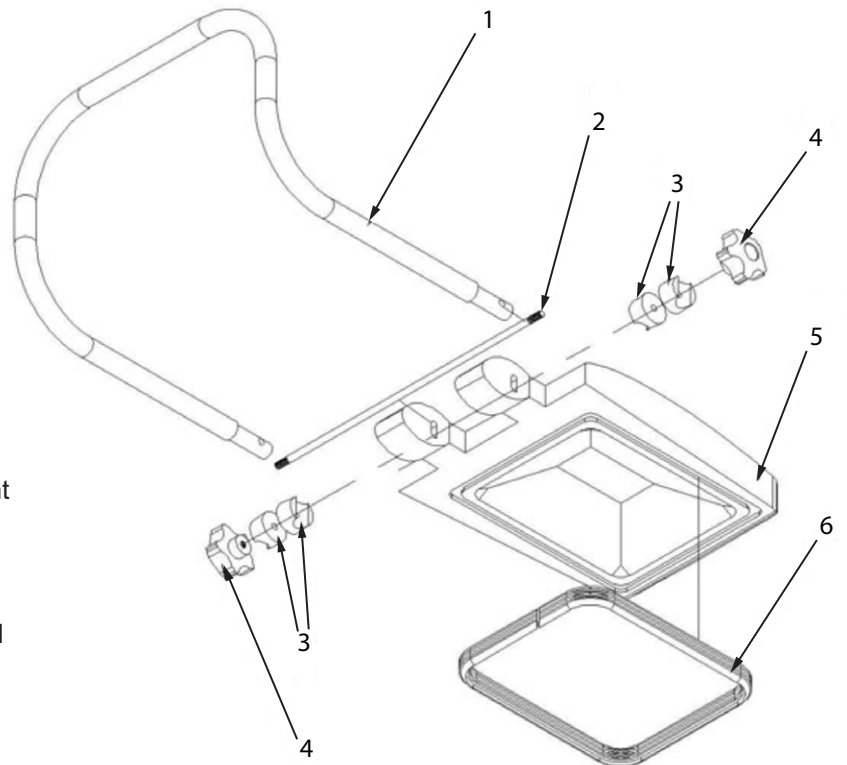
IMPORTANT Parts on this page support Serial Numbers starting with "AH"

Recovery Tank Group



- | | | |
|---|--------|---------------------------------|
| 1 | W13458 | Screw, Bracket of Floating ball |
| 2 | W10951 | Floating Ball Shutoff Tube |
| 3 | W12358 | Recovery Tank |
| 4 | W10952 | Clip |
| 5 | W12359 | Air-suction pipe |
| 6 | W12359 | Air-suction Pipe |
| 7 | W12361 | Drainage Pipe |

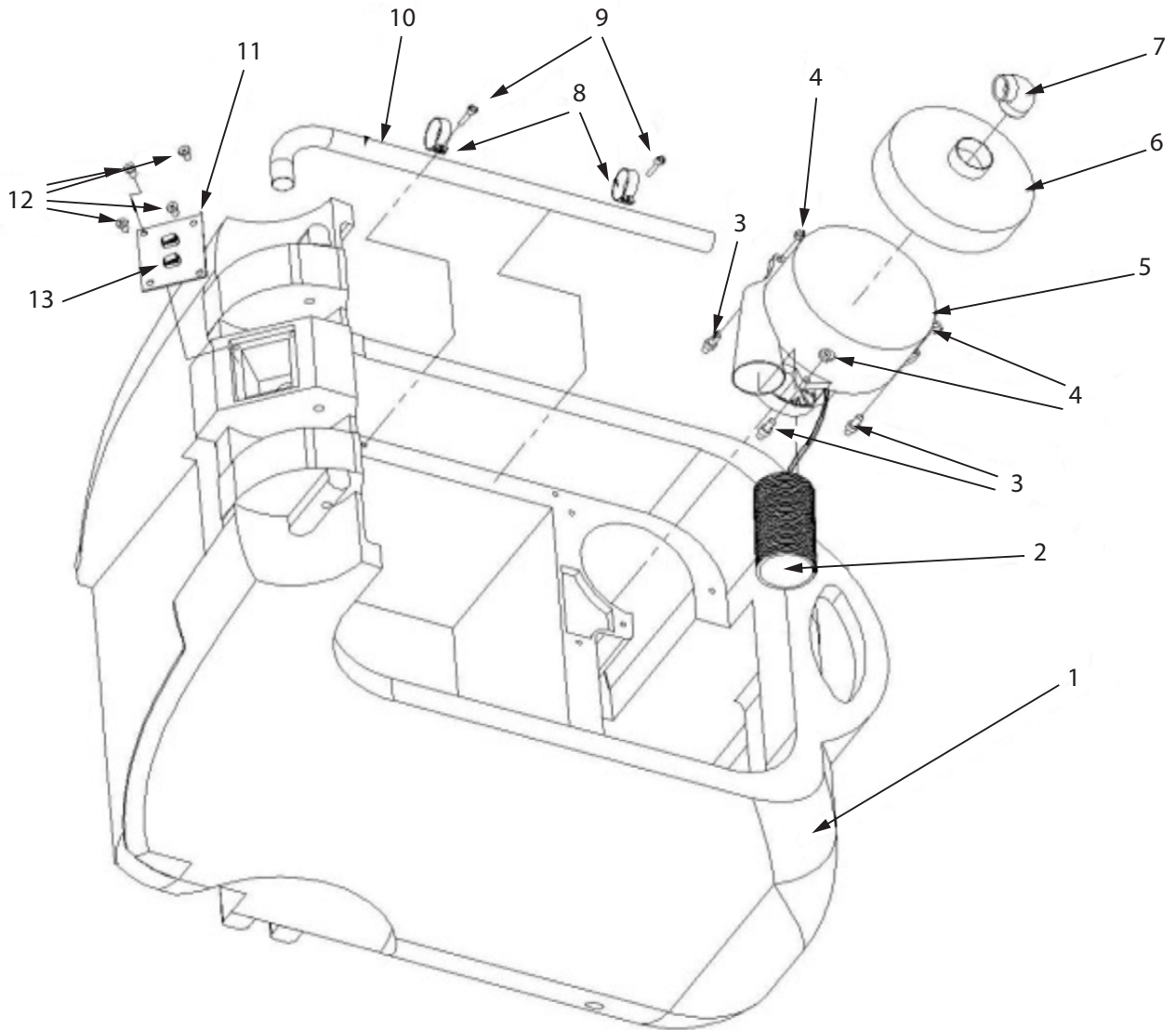
Handle & Lid Group



- | | | |
|---|--------|--------------------------|
| 1 | W12340 | Handle |
| 2 | W12341 | Handle fixing Shaft |
| 3 | W12342 | Buckle, handle adjutment |
| 4 | W12343 | Knob |
| 5 | W12344 | Recovery tank cover |
| 6 | W10825 | Recovery tank tover seal |

IMPORTANT Parts on this page support Serial Numbers starting with "SH"

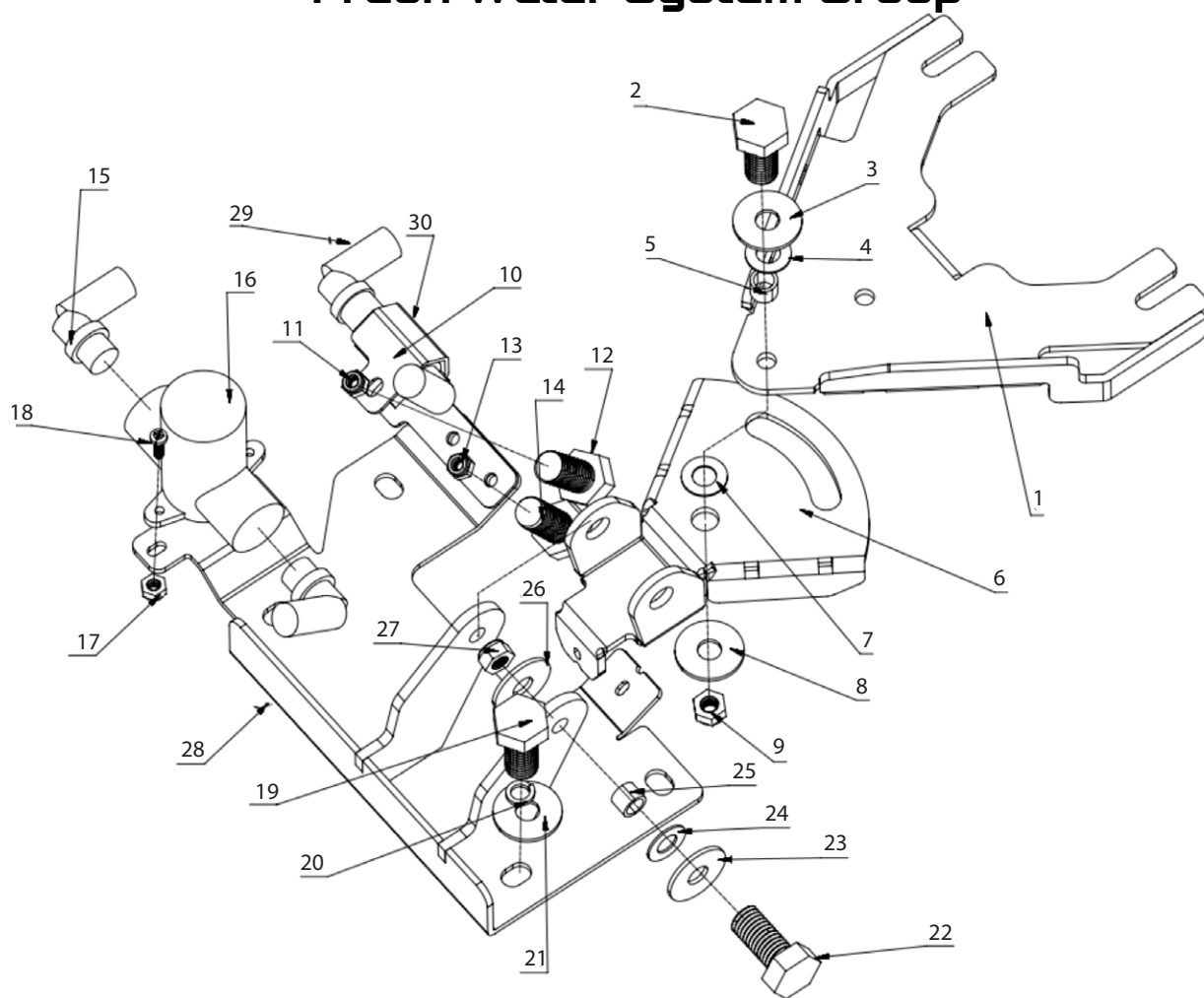
Fresh Water Tank Group



1	W12346	Fresh Water Tank, DX15	10	W12352	Wire pipe
2	W10954	Vacuum Noise Muffler	11	W12353	Control Panel with Sticker DX15
3	W11025	Damping Block, M6*25*21		For Reference	Panel Paper DX15
4	For Reference	M6Lock Nut	12	For Reference	M5*15 Round head Phillips screw
5	W10872	Vacuum Motor, 130808-01	13	W10815	Machine Key Switch, 2 Keys
6	W12350	Plastic Vacuum Motor Cover DX15	14	W10853	Key
7	For Reference	Elbow Pipe DX15	15	QX12V125	Battery, 12V 125Ah
8	For Reference	Zip Tie Clip, Plastic	16	QXC24V15	Charger
9	For Reference	M5*15 Round head Phillips screw			

IMPORTANT Parts on this page support Serial Numbers starting with “SH”

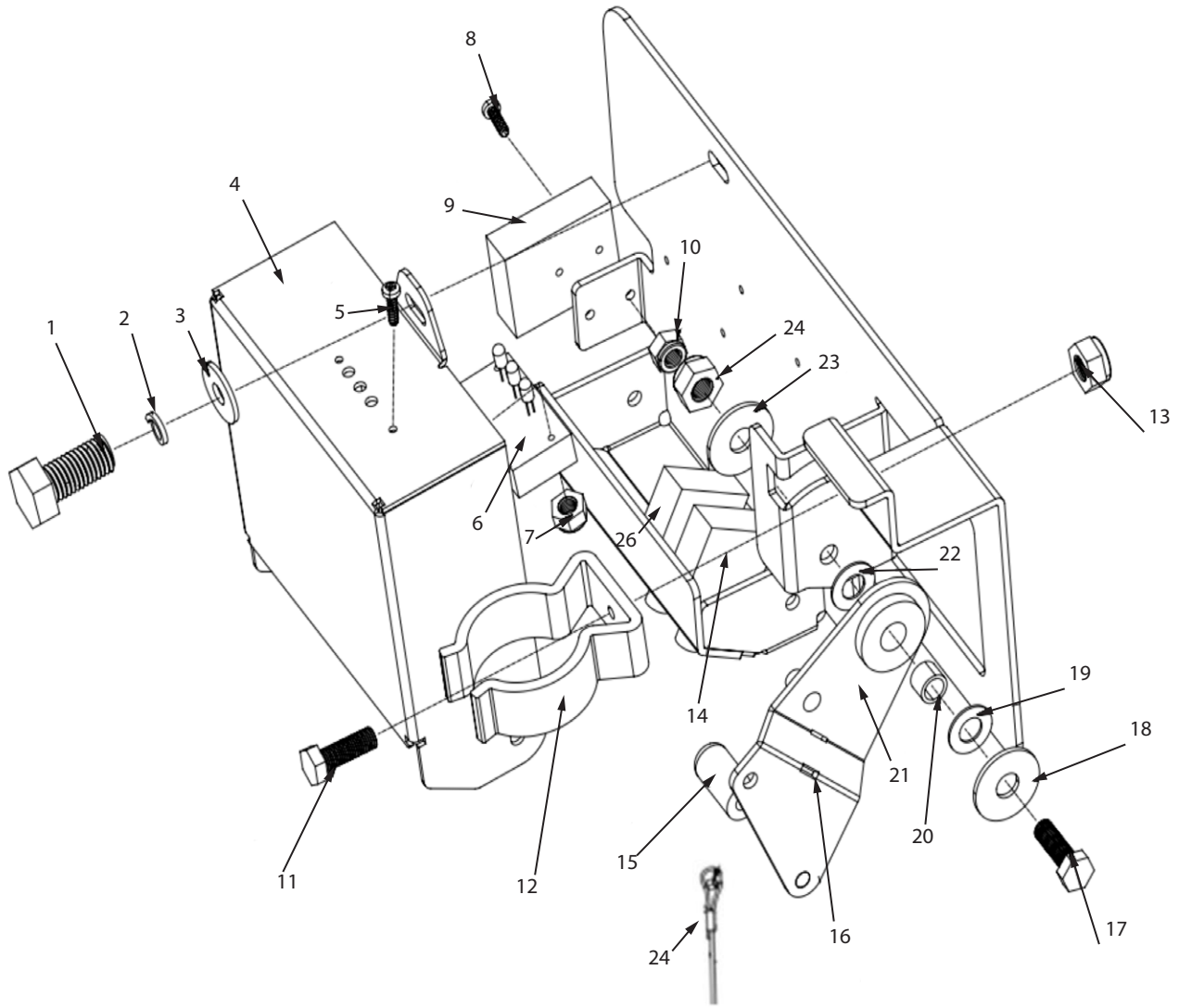
Fresh Water System Group



1	W12330	Squeegee Frame connecting 1	17	For Reference	Nut
2	For Reference	8x30 Screw	18	For Reference	Screw
3	W12301	M8 Washer	19	For Reference	M8x15 Bolt
4	W12300	M8 Nylon Washer	20	W12010	M8 Spring washer
5	W11082	Brass sleeve	21	W12301	M8 Washer
6	W12331	Squeegee Frame connecting 2	22	For Reference	M8X30 Screw
7	W12300	Nylon washer	23	W12301	M8 Washer
8	W11076	M8 washer	24	W12300	M8 Nylon Washer
9	W12263	M8 Non-slip nut	25	W11082	Brass Sleeve
10	W12335	Quarter Turn Ball Valve, 3/8"	26	W12301	M8 Washer
11	For Reference	M6Nut	27	W12263	M8 Nut
12	For Reference	M6X30 Screw	28	W12333	Lower Steel Mounting Plate
13	For Reference	M6 nut	29	W13337	Elbow joint
14	For Reference	M6x20Screw	30	W12338	Water Valve fixing plate
15	W12334	3/8" Elbow Brass joint	31	W12278	Spring Clamp ID18
16	W10869	Filter	32	W13459	Spring 1.8x18x22.5Tx77.6H

IMPORTANT Parts on this page support Serial Numbers starting with "SH"

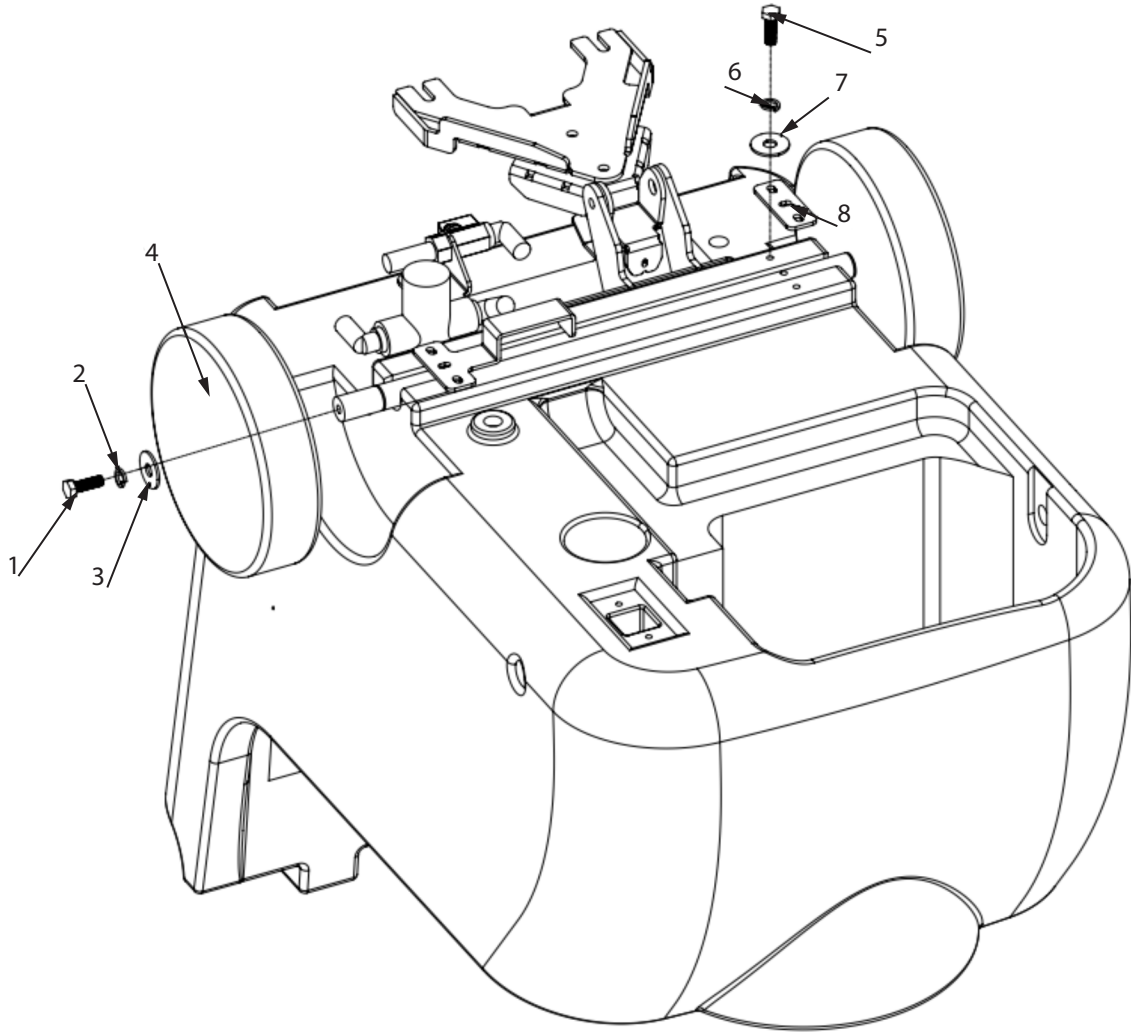
Frame Group



- | | | | | | |
|----|---------------|------------------------------------------|----|---------------|---------------------------------|
| 1 | W12043 | M6*20 Bolt, Hex head | 14 | W12365 | 40A Overload Protection |
| 2 | For Reference | M6 Spring washer | 15 | W11074 | Round Handle, Black |
| 3 | For Reference | M6 Large washer | 16 | W12368 | Squeegee Lifting Handle Bracket |
| 4 | W12362 | Electrical Components Cover Box DX15 | 17 | For Reference | M8*30 Bolt, Hex head |
| 5 | For Reference | M3*40 Round head cross head screw | 18 | W12301 | M8 Large washer |
| 6 | W12363 | Power Light (set of 3 with circuit) DX15 | 19 | W12300 | M8 Nylon washer |
| 7 | For Reference | M3 Lock Nut | 20 | W11156 | Copper sleeve 8.5*12* 15mm |
| 8 | For Reference | M3*25 Round head cross head screw | 21 | W12300 | M8 Nylon washer |
| 9 | W10858 | Small Red Electrical Connector 50A | 22 | W12301 | M8Washer |
| | For Reference | Male and female plug 50A (with handle) | 23 | W12263 | M8 Lock Nut |
| 10 | For Reference | M3 Lock Nut | 24 | W13263 | Steel wire, 390mm w/ Ball Joint |
| 11 | For Reference | M5*15 Round head cross head | 25 | W10816-5A | 5A Overload Protection |
| 12 | W10839 | screw Drainage Pipe Clip | 26 | W13501 | Small Relay 20V50A |
| 13 | For Reference | M5 Lock Nut | | | |

IMPORTANT Parts on this page support Serial Numbers starting with "SH"

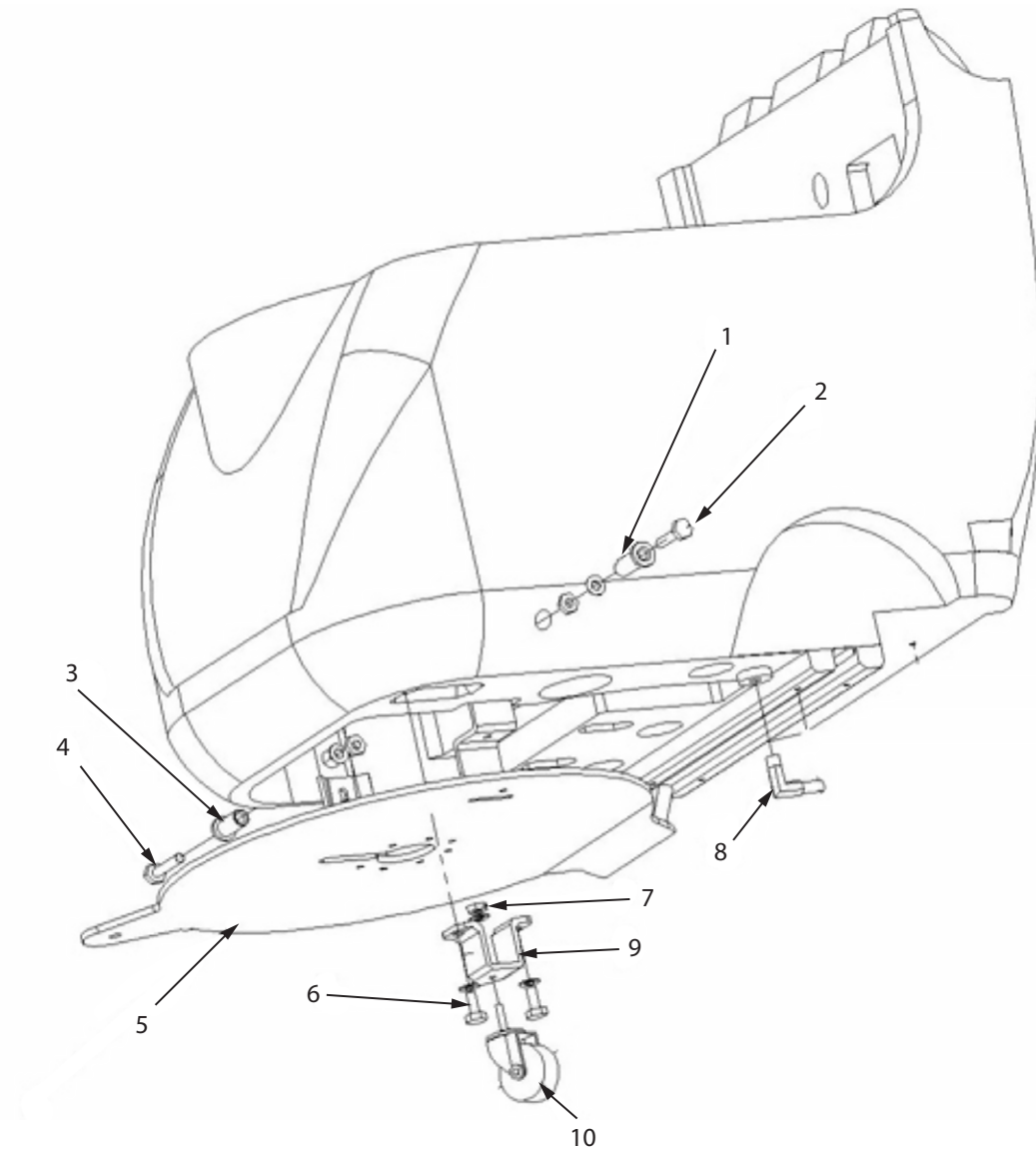
Wheel Group



1	For Reference	M8×15 Screw
2	W12010	M8 Spring Washer
3	W12301	M8 Washer
4	W10855	Main Wheel 8"
5	For Reference	M6×15 Screw
6	For Reference	M6 Spring washer
7	For Reference	M6 Washer
8	W12339	Plate, fixing wheel shaft

IMPORTANT Parts on this page support Serial Numbers starting with “SH”

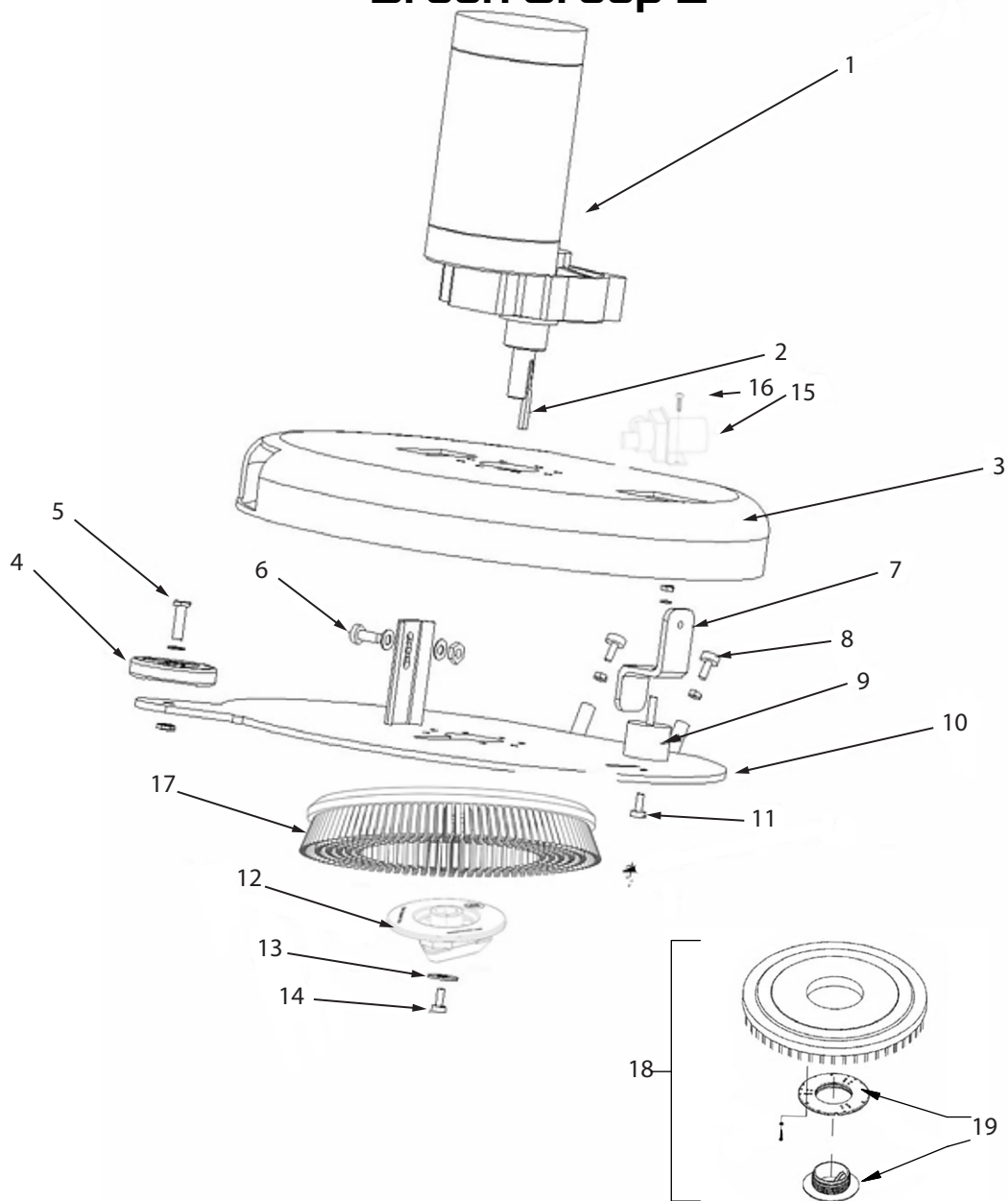
Brush Group 1



1	W12369	Fixing Sleeve, brush assembly (right)
2	For Reference	Screw (right)
3	W12370	Brush Motor Head Mounting Plate
4	For Reference	Screw (left)
5	W12379	Screw, brush motor
6	For Reference	Screw, Caster bracket
7	W12153	M10 Lock Nut
8	W12371	Elbow Joint 1/4-14mm, NPT
9	W12372	Caster Bracket
10	W12373	Caster

IMPORTANT Parts on this page support Serial Numbers starting with “SH”

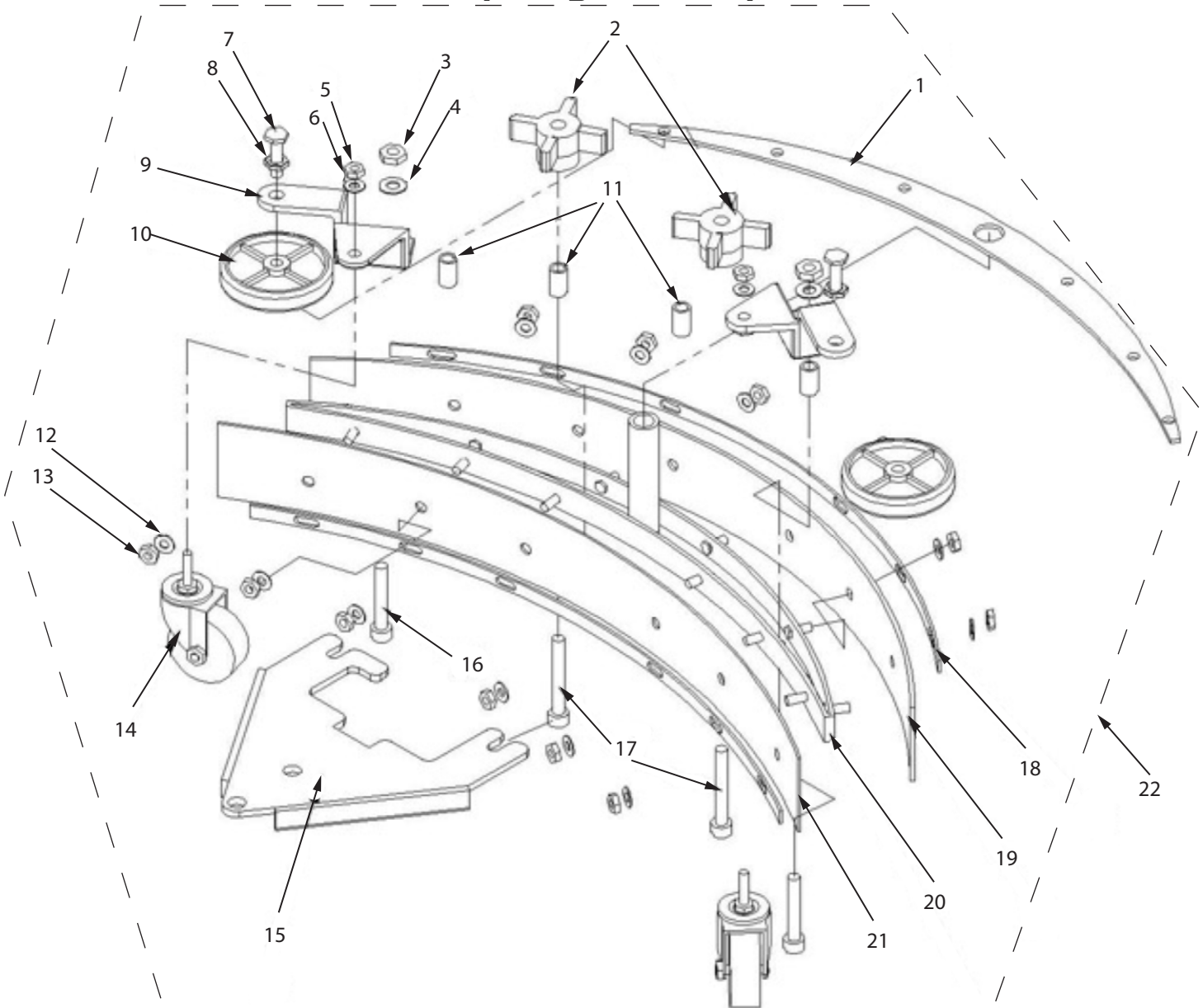
Brush Group 2



1	W11093	Brush Motor	12	W10813	Triangle Driver
2	W11097	Key	13	W12301	M8 Washer
3	W12375	Brush Cover	14	For Reference	Screw
4	W12376	Bumper Wheel	15	W10818	Solenoid Valve
5	For Reference	Screw	16	For Reference	M6 Screw
6	For Reference	Screw, Brush Assembly	17	W10806	Brush 15", Standard Stiffness
7	W12377	Lifting Lug, right		W10879	Brush 15", Extra Stiffness
8	W13556	Spring 2.5x18x10Tx44.3H	18	W10807	Pad Driver, 15"
9	W12378	Damping block	19	W10848	Pad Holder, Clip & Housing (Legacy Design)
10	W12379	Brush Cover plate		W13211	Plastic Pad Holder, Clip & Housing (Current, replaces W10848)
11	For Reference	Screw			

IMPORTANT Parts on this page support Serial Numbers starting with "SH"

Squeegee Group



1	W12383	Squeegee Plate-1 DX15(New)	12	For Reference	M6Large washer
2	W10985	Star Knob	13	For Reference	M6Lock Nut
3	W12263	M8 Lock Nut	14	W10870	Tiny Caster with Long Thread
4	For Reference	M8 NUT	15	W12330	Squeegee Attachment Mount
5	W12153	M10 Lock Nut	16	For Reference	M8*55Carriage Bolts
6	W12154	M10 Washer	17	W12084	M8*55 Hex Bolt
7	For Reference	M8*90Carriage Bolts	18	W12390	Squeegee Blade Clamping Strip DX15
8	W11076	M8 Washer	19	W12391	Squeegee Blade, rear 623*67*3.18mm
9	W12385	Bottom Fixed Iron DX15	20	W12392	Squeegee Bracket Weldment - Middle DX15
10	W12376	Bumper Wheel, 3"	21	W12393	Squeegee Blade, front 623*67*3.18mm
11	W12387	Brass Sleeve 8.5*12*36mm	22	W12395	Squeegee Assembly

IMPORTANT Parts on this page support Serial Numbers starting with "SH"

ONYX[®]

We believe that tomorrow can, and will, be better than today.

But, it won't happen on its own.

T H E F U T U R E S T A R T S W I T H Y O U

OnyxSolutions.com