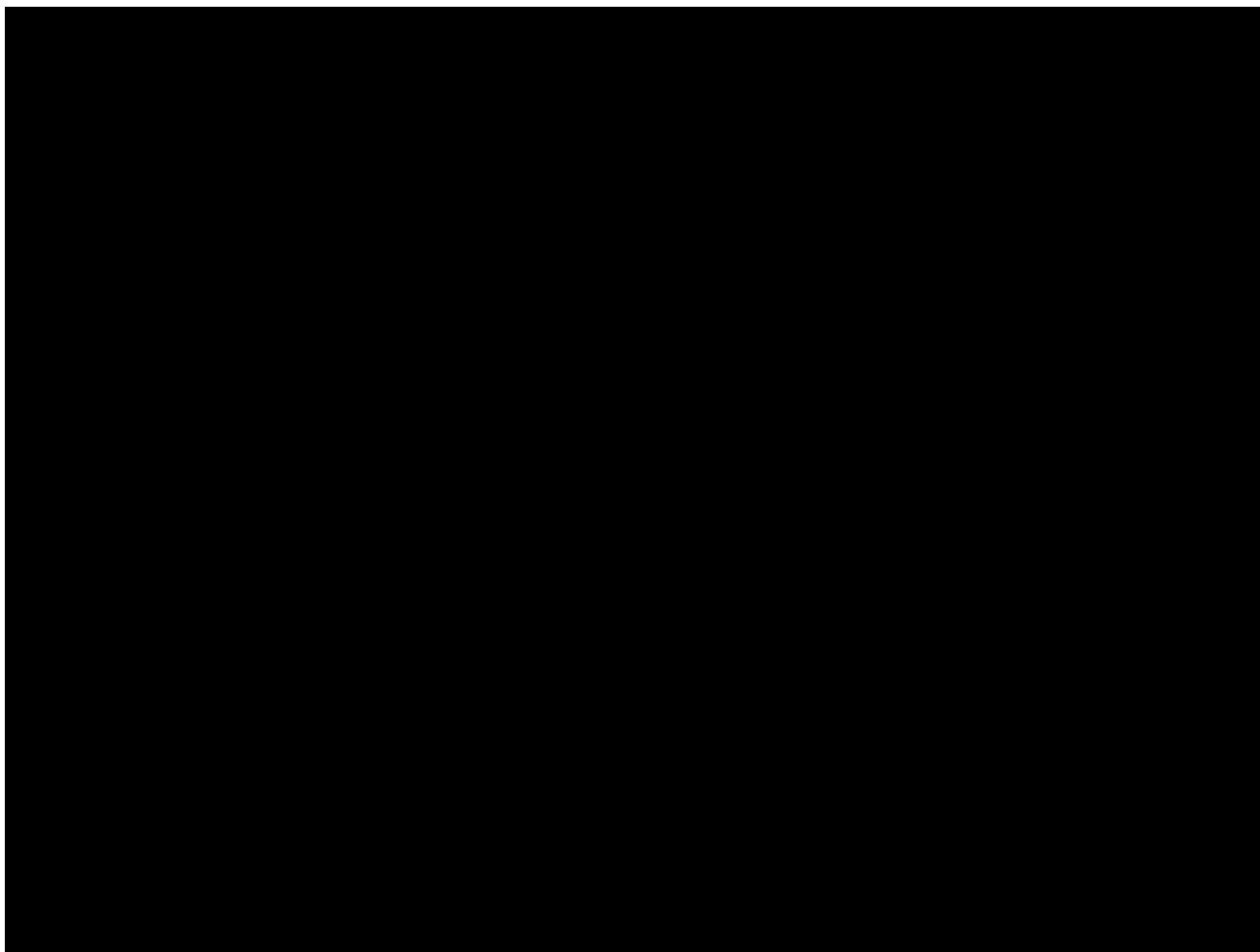


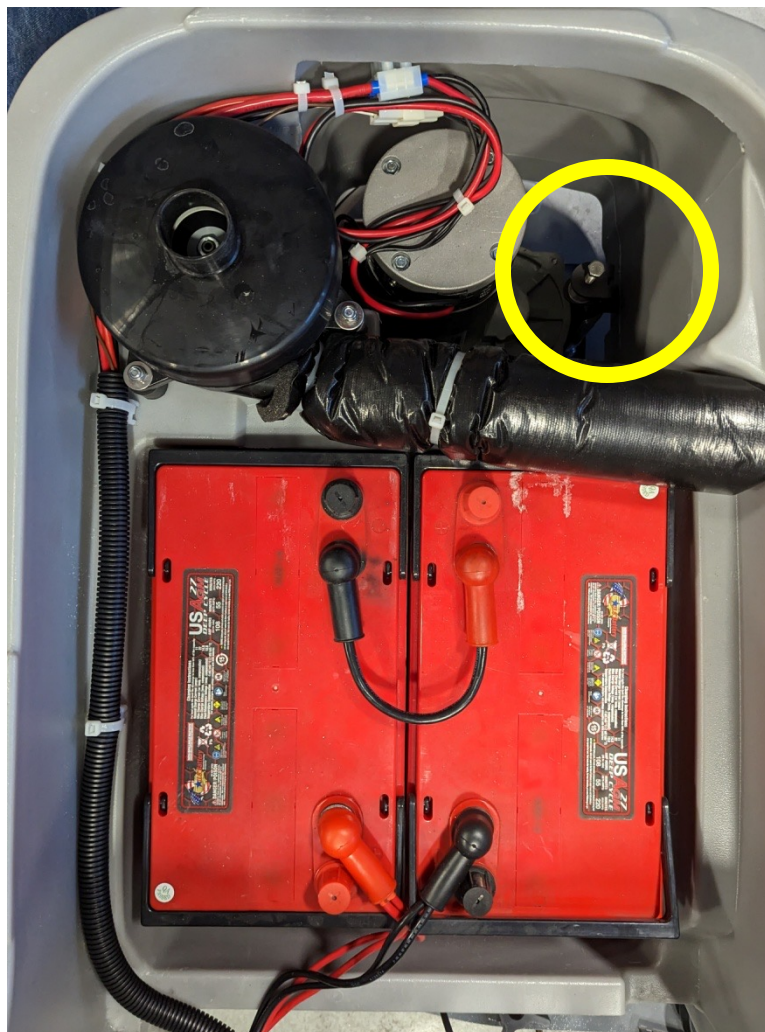
DX15 Front Head Adjustment



Bouncing Head

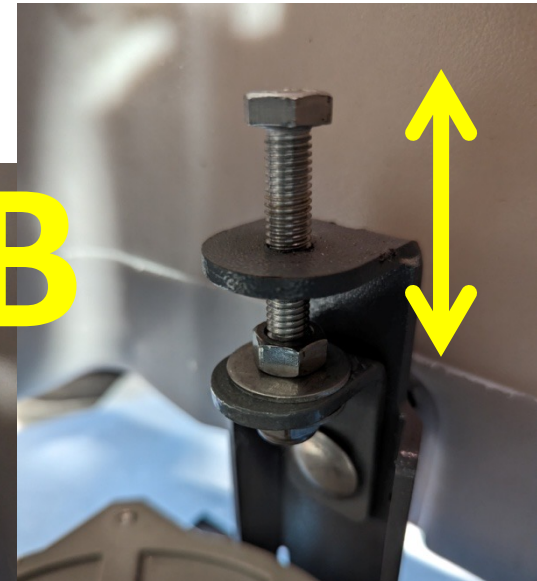


Notice Head Adjustment Screw



Notice Head Adjustment Screw

- First, loosen the outside bolt “A” on exterior side of DX15 machine (Operators Left Side)
- Loosen adjustment screw “B” on the inside to reduce head pressure and minimize bounce effect.
- Tighten adjustment bolt “B” to increase head pressure. This may result in tendency for machine to bounce or pull forward and to the operators left.
- Tighten bolt “A” to secure final adjustment



Other Contributing Factors

- Adjust the operator handle to the correct position and test with an operator holding on the unit.
- Be sure to set the machine up when it is full of fresh water.
- Inspect the batteries and make sure they are not sliding around. Secure if needed.

*** Different Head Type***

- The first round of DX15 machines were produced with a unique driver system (Initial Release)
- Upon production we immediately switched to type A which is used on all of our other scrubber machines.
- If customer replaces pad driver or brush and finds the incorrect fit, we should send a new triangle driver W10813
- There are only 2-8 machines with the Initial Release version of the driver, and each can easily be retrofitted with Triangle Driver.

