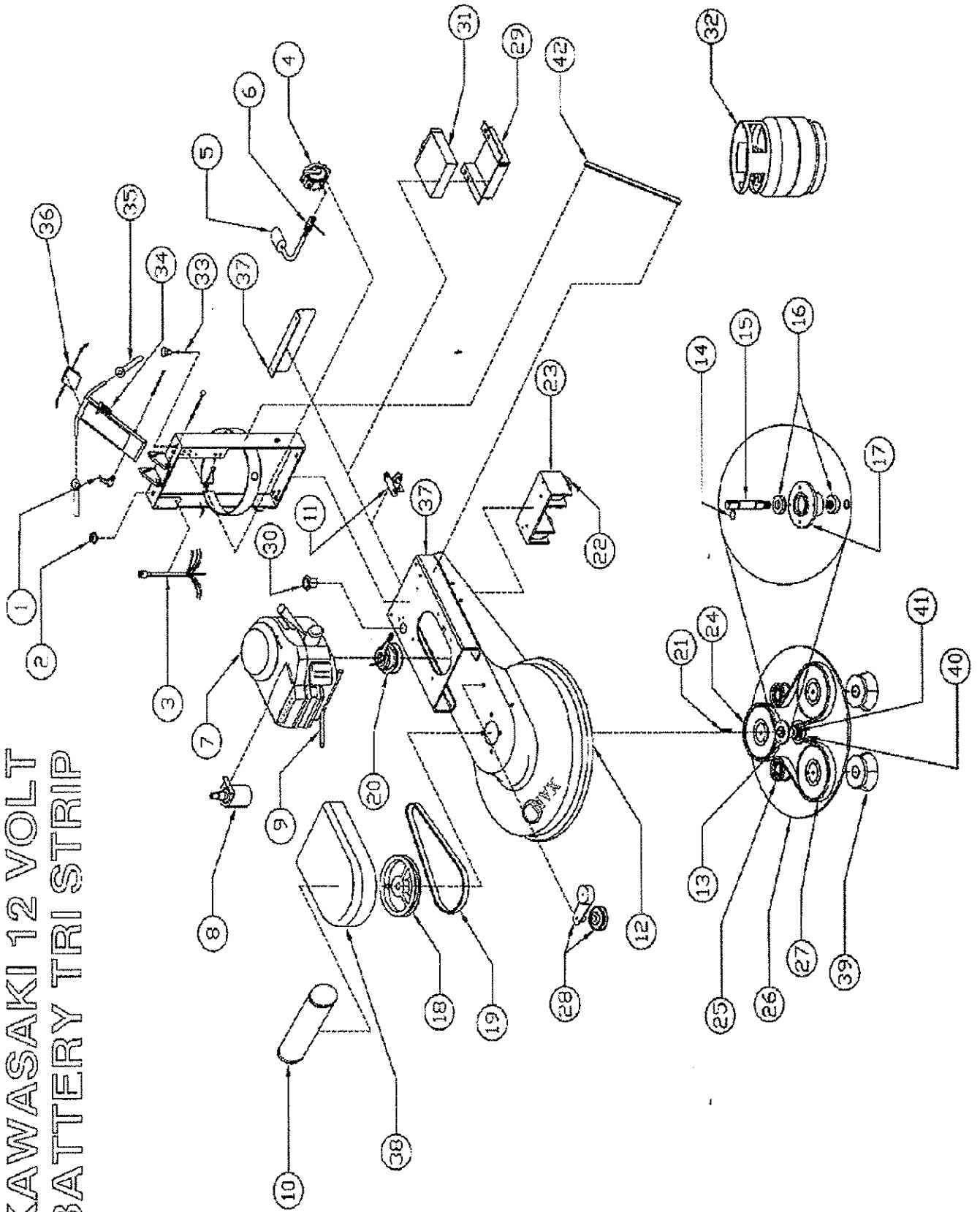


KAWASAKI 12 VOLT BATTERY TRI STRIP





KAWASAKI 12 VOLT TRI STRIP

REF #	PART #	PART DESCRIPTION	QTY
1	W4020	Bottle Carrier Adjustment Handle	1
2	W1301	Ignition Switch	1
3	W1302	Ignition Switch Harness	1
4	N-51-2A-C-3.0	Regulator (W2606)	1
5	W2649C	12" Hose Assembly w/ Regulator Valve	1
6	W2608	Electric Fuel Lock-off	1
7	W3100	13 Hp Kawasaki Twin Engine	1
	W3101	17 Hp Kawasaki Twin Engine	
8	K21163-7010	12 Volt Starter	1
9	W3225	17 Hp Kawasaki Manifold	1
	W3235	13 Hp Kawasaki Manifold	
10	W3260	Muffler	1
	W3220	Cat	1
11	W1305	Solenoid 12V	1
12	W5021	21" Deck	1
	W5024	24" Deck	
	W5027	27" Deck	
13	W1035	Tri-Strip Lower Main Housing	1
14	F68019	Snap Ring	2
15	W1008	Tri-Strip Main Shaft 1 Piece 1 3/16"	1
16	W1055	Bearing	2
17	W1060	Aluminum Housing	1
18	W2140	13.8" Pulley	1
19	WBX56	56" Belt	1
20	W1210	Electric Clutch	1
21	F47913	Key stock	1
22	W4225	Rubber Strip Wheel 6 x 1.5"	2
	W4226	Axle Kit for W4225	2
23	W4261	Stripper Tire/Wheel Bracket	1
24	W2235	Sprocket P90-8M-20	3
25	W2010	Retlow Pulley (Idler Pulley)	2
26	W5120	27" Tri-Strip Disc Driver	1
27	W2208	Double-Sided Belt, TP 2400	1
	W2207	Double-Sided Belt, TP 2200	
28	W1101	Fenner Rotary Tensioner	1
29	W4270	Battery Tray	1
30	W4302	Hour Meter	1
31	W4350	Battery 12V 18 AH	1
32	W2502	Propane Tank 80% Steel	1
33	W4134	Choke Cable 48"	1
34	W4110	Throttle Cable 53"	1
35	W4050	Hand Grip	2
36	W1311	Eagle Electric Clutch Switch	1
37	W5150	Motor Mount 24"	1
	W5151	Motor Mount 27"	
38	W5110	Belt Guard	1
39	W1610	Tri-Strip Brushes	3
40	W1035	Tri-Strip Lower Main Housing	1
41	W2230	Sprocket P28-8M-30-JA	1
42	W2265	Support Bar 14"	2